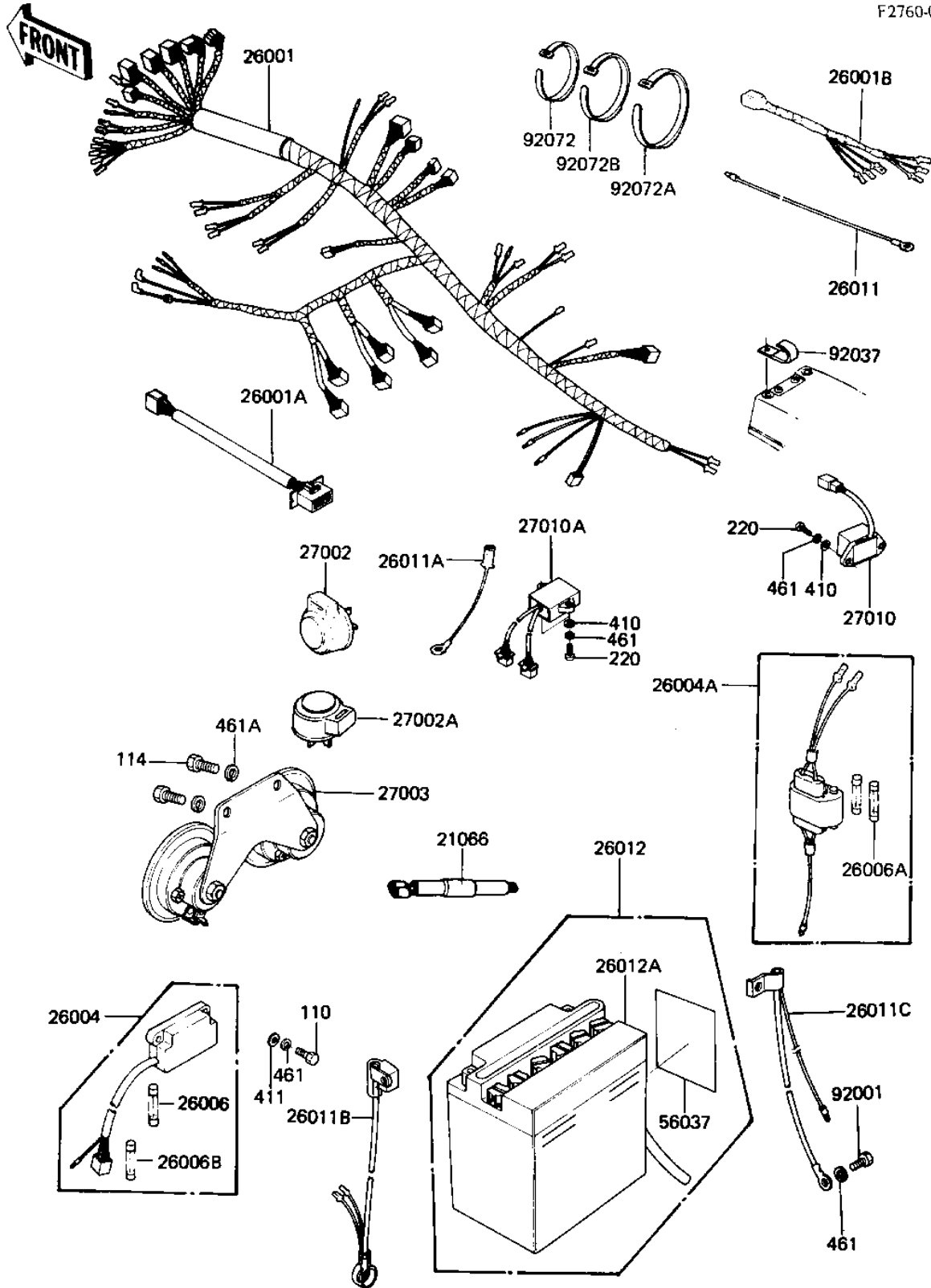


1982 LTD PARTS DIAGRAM

CHASSIS ELECTRICAL EQUIPMENT

F2760-0081



1982 LTD PARTS LIST

CHASSIS ELECTRICAL EQUIPMENT

ITEM NAME	PART NUMBER	QUANTITY
REGULATOR (Ref # 21066)	21066-026	1
HARNESS,MAIN (Ref # 26001)	26001-1206	1
HARNESS,RESERVE LIGH (Ref # 26001A)	26001-1248	1
WIRING HARNESS,REAR (Ref # 26001B)	26002-063	1
FUSE-ASSY (Ref # 26004)	26004-1011	1
FUSE-ASSY,ACCESSORY (Ref # 26004A)	26004-1014	1
FUSE 10A (Ref # 26006)	26006-003	5
FUSE,10A,L=30M/M (Ref # 26006A)	26006-1002	3
FUSE,30A,L=25M/M (Ref # 26006B)	26006-1005	2
LEAD WIRE,SIGNAL LAM (Ref # 26011)	26011-063	2
WIRE-LEAD,ACCESSORY (Ref # 26011A)	26011-1100	1
WIRE-LEAD (Ref # 26011B)	26011-1118	1
WIRE-LEAD,BATTERY,(- (Ref # 26011C)	26011-1124	1
YUA BAT YB18L-A (Ref # 26012)	26012-1039	1
UNAVAILABLE IN PRICE BOOK (Ref # 96012A)	96012-1040	1
RELAY-TURN SIGNAL (Ref # 27002)	27002-011	1
RELAY,TURN SIGNAL (Ref # 27002A)	27002-016	1
HORN (Ref # 27003)	27003-1304	1
SWITCH,RESERVE LIGHT (Ref # 27010)	27010-1024	1
SWITCH,TRN SGNL LAMP (Ref # 27010A)	27010-1048	1
CLAMP,WIRING HARNESS (Ref # 92037)	92037-1069	2
BOLT,HEX HEAD,6MM (Ref # 92001)	92001-137	1
CLAMP,WIRING HARNESS (Ref # 92037)	92037-1069	2
BAND,MIDDLE (Ref # 92072)	92072-031	3
BAND,LONG (Ref # 92072A)	92072-032	2
BAND,WIRING HARNESS (Ref # 92072B)	92072-056	2
BOLT 6X22 (Ref # 110)	112B0622	2
BOLT-SMALL-UPSET,8X1 (Ref # 114)	115G0816	2
SCREW PAN HEAD 6X20 (Ref # 220)	220B0620	4

1982 LTD PARTS LIST

CHASSIS ELECTRICAL EQUIPMENT

ITEM NAME	PART NUMBER	QUANTITY
WASHER PLAIN 6MM (Ref # 410)	410B0600	4
WASHER PLAIN 6MM (Ref # 411)	411B0600	2
WASHER SPRING 6MM (Ref # 461)	461F0600	7
WASHER SPRING 8MM (Ref # 461A)	461F0800	2