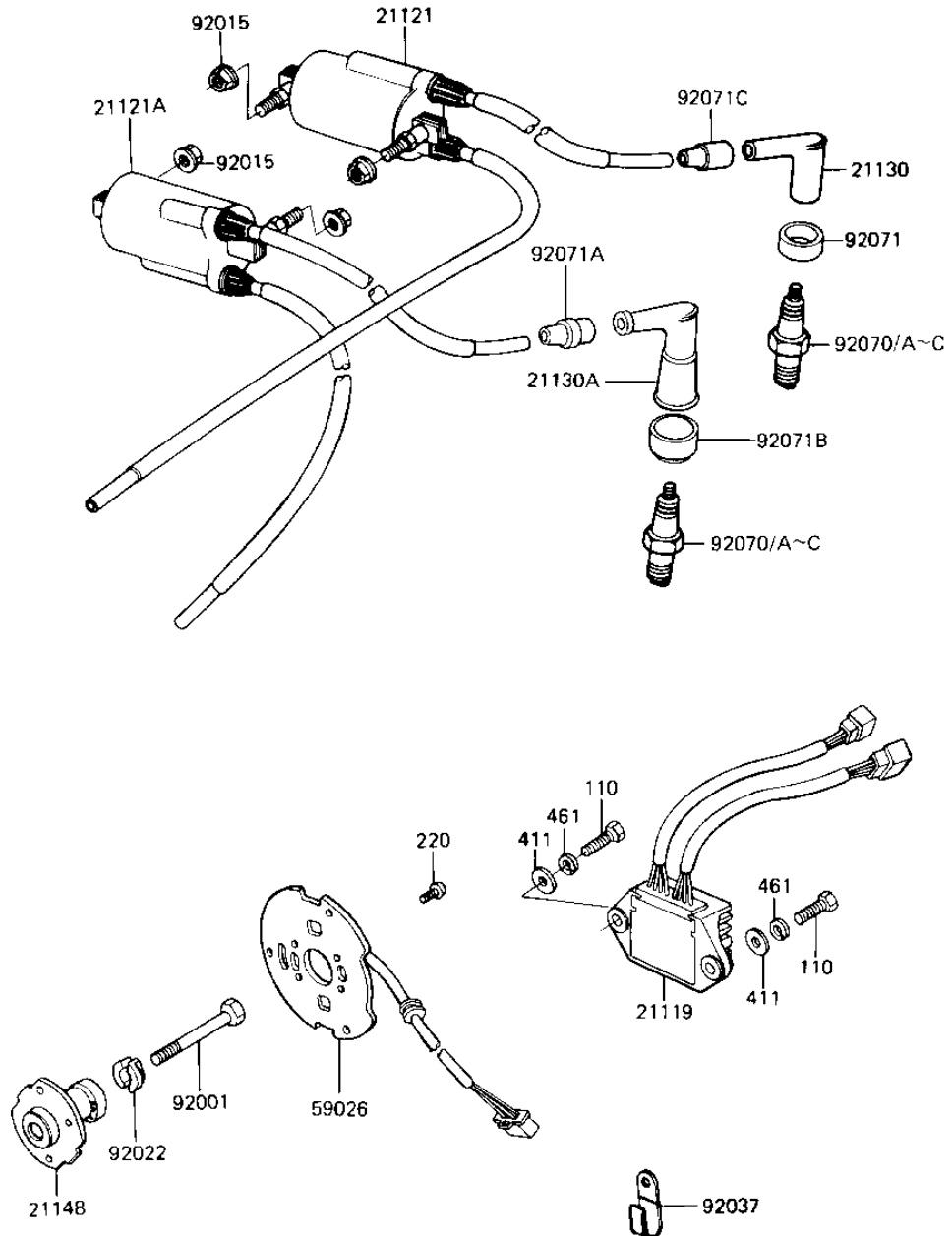


# 1982 KZ1000-J2 PARTS DIAGRAM

## IGNITION



E1830-0080



# 1982 KZ1000-J2 PARTS LIST

## IGNITION

ITEM NAME	PART NUMBER	QUANTITY
IGNITER (Ref # 21119)	21119-1041	1
COIL-IGNITION (Ref # 21121)	21121-1038	1
COIL-IGNITION (Ref # 21121A)	21121-1039	1
CAP-SPARK PLUG,RTFM20 (Ref # 21130)	21130-1007	2
CAP-SPARK PLUG (Ref # 21130A)	21130-1010	2
GOVERNOR-BREAKER (Ref # 21148)	21148-1020	1
COIL-PULSING (Ref # 59026)	59026-1012	1
BOLT-8X63 (Ref # 92001)	92001-1397	1
NUT-6MM (Ref # 92015)	92015-1078	4
WASHER,SPARK ADVANCER (Ref # 92022)	92022-244	1
CLAMP,WIRING HARNESS (Ref # 92037)	21126-008	5
SPARK PLUG B8ES (Ref # 92070)	B8ES	4
SPARK PLUG BR8ES (Ref # 92070B)	BR8ES	4
GROMMET-PLUG CAP,A (Ref # 92071)	21131-004	2
GROMMET,HIGH TENSION (Ref # 92071A)	21131-005	2
GROMMET,PLUG CAP (Ref # 92071B)	21131-006	2
GROMMET,SPARK PLG CAP (Ref # 92071C)	21132-005	2
BOLT-UPSET (Ref # 110)	112G0618	2
SCREW PAN HEAD 5X12 (Ref # 220)	220B0512	3
WASHER PLAIN 6MM (Ref # 411)	411B0600	2
WASHER SPRING 6MM (Ref # 461)	461F0600	2