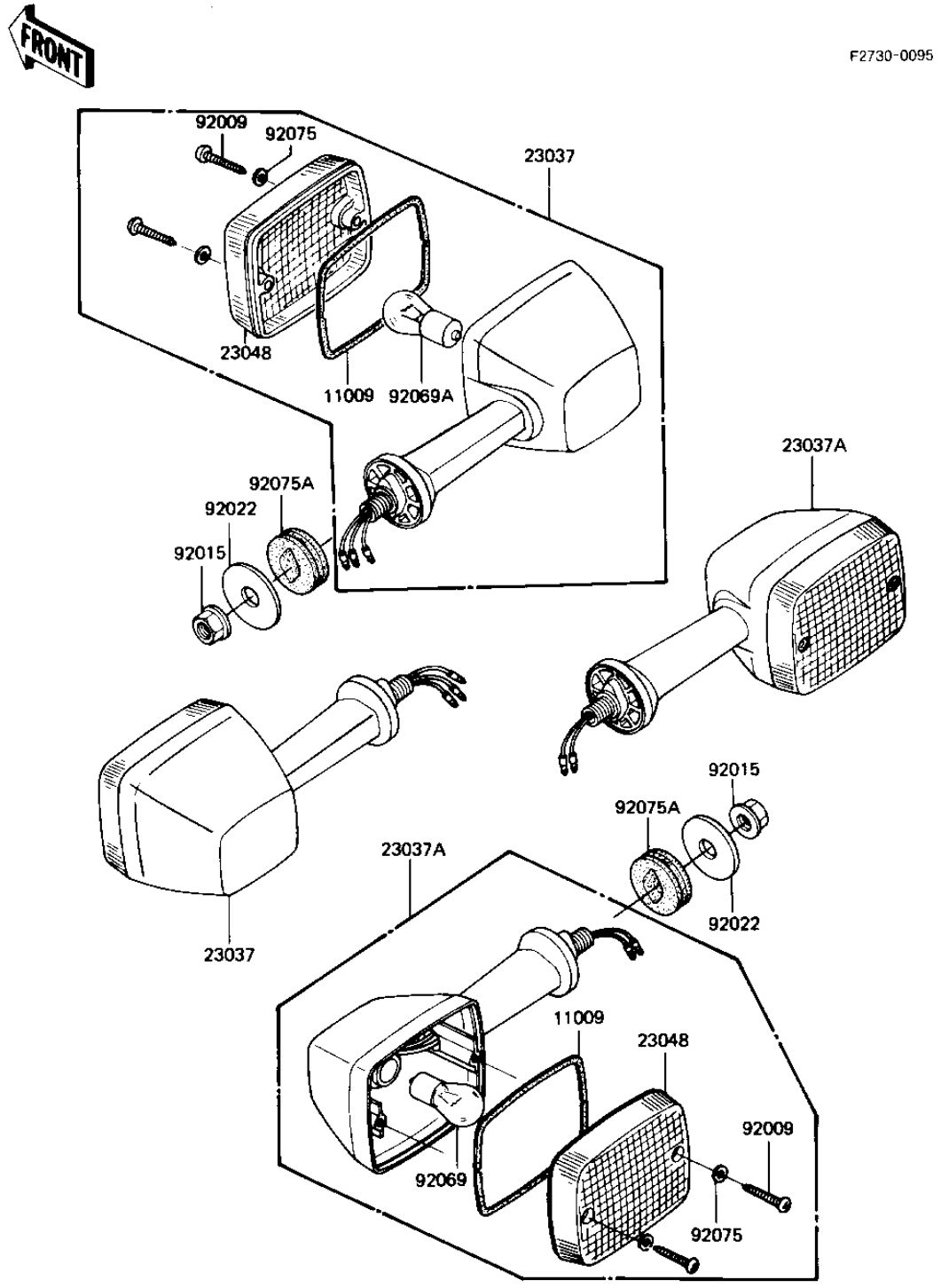


# 1982 KZ1000-J2 PARTS DIAGRAM

## TURN SIGNALS



F2730-0095

## 1982 KZ1000-J2 PARTS LIST

### TURN SIGNALS

| ITEM NAME                         | PART NUMBER | QUANTITY |
|-----------------------------------|-------------|----------|
| GASKET,SIGNAL LAMP (Ref # 11009)  | 11009-1150  | 4        |
| LAMP-ASSY-SIGNAL,FR (Ref # 23037) | 23037-1131  | 2        |
| LAMP-ASSY-SIGNAL (Ref # 23037A)   | 23037-1104  | 2        |
| LENS-SIGNAL LAMP (Ref # 23048)    | 23048-1019  | 4        |
| SCREW,TAPPING,4X25 (Ref # 92009)  | 92009-1069  | 8        |
| NUT,FLANGED,10MM (Ref # 92015)    | 92015-1428  | 4        |
| WASHER,10.5X37X1.6 (Ref # 92022)  | 92022-1246  | 4        |
| BULB 12V 32CP (Ref # 92069)       | 92069-055   | 2        |
| BULB,12V 23/8W (Ref # 92069A)     | 92069-060   | 2        |
| WASHER-PLAIN,4MM (Ref # 92075)    | 23058-002   | 8        |
| DAMPER,SIGNAL LAMP (Ref # 92075A) | 92075-1391  | 4        |