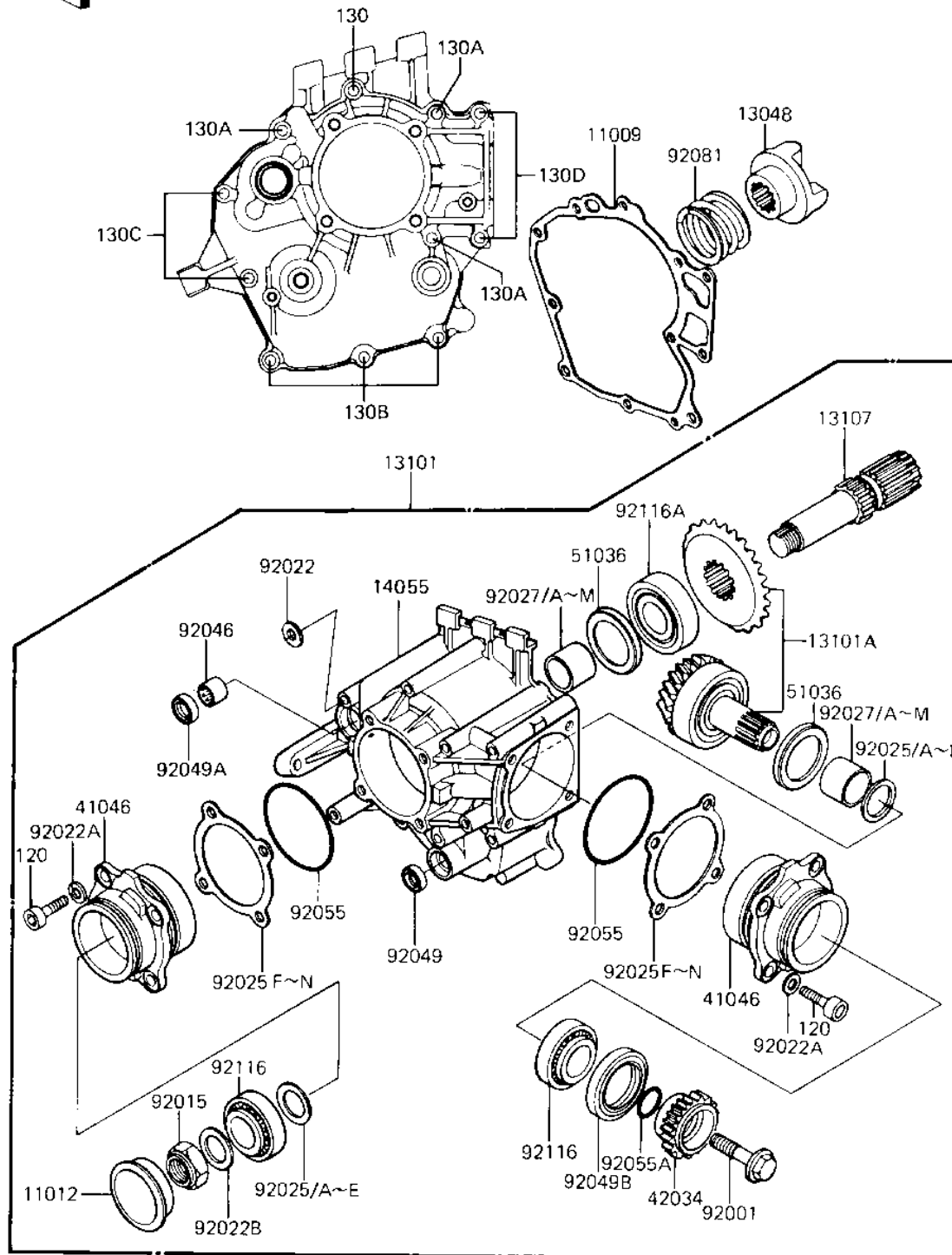


# 1982 Shaft PARTS DIAGRAM

FRONT BEVEL GEARS



E3130-0002



# 1982 Shaft PARTS LIST

## FRONT BEVEL GEARS

| ITEM NAME                                | PART NUMBER | QUANTITY |
|--|-------------|----------|
| GASCKET,FRONT BEVEL (Ref # 11009)        | 11009-1112  | 1        |
| CAP (Ref # 11012)                        | 11012-1071  | 1        |
| CAM,DAMPER (Ref # 13048)                 | 13048-1005  | 1        |
| GEAR-ASSY,FRONT BEVEL (Ref # 13101)      | 13101-1014  | 1        |
| GEAR SET,FRONT BEVEL (Ref # 13101A)      | 13101-5027  | 1        |
| SHAFT,FRONT BEVEL GER (Ref # 13107)      | 13107-1014  | 1        |
| CASE,FRONT BEVEL GEAR (Ref # 14055)      | 14055-1003  | 1        |
| HOUSING-BEARING,F.BVL (Ref # 41046)      | 41046-1011  | 2        |
| COUPLING,FR DRIVEN (Ref # 42034)         | 42034-1091  | 1        |
| CUP (Ref # 51036)                        | 51036-1002  | 2        |
| BOLT,12X42 (Ref # 92001)                 | 92001-1169  | 1        |
| NUT,20M/M (Ref # 92015)                  | 92015-1065  | 1        |
| WASHER,PLAIN (Ref # 92022)               | 92022-1028  | 1        |
| WASHER,PLAIN (Ref # 92022A)              | 92022-1028  | 8        |
| WASHER,PLAIN,2.3X20.3 (Ref # 92022B)     | 92022-1116  | 1        |
| SHIM,1.70T (Ref # 92025)                 | 92025-1072  | AR       |
| SHIM,1.72T (Ref # 92025A)                | 92025-1073  | AR       |
| SHIM,1.74T (Ref # 92025B)                | 92025-1074  | AR       |
| SHIM,1.76T (Ref # 92025C)                | 92025-1075  | AR       |
| SHIM,1.78T (Ref # 92025D)                | 92025-1076  | AR       |
| SHIM,1.80T (Ref # 92025E)                | 92025-1077  | AR       |
| SHIM,0.15T (Ref # 92025F)                | 92025-1078  | AR       |
| SHIM,0.50T (Ref # 92025G)                | 92025-1079  | AR       |
| SHIM,0.60T (Ref # 92025H)                | 92025-1080  | AR       |
| SHIM,0.70T (Ref # 92025I)                | 92025-1081  | AR       |
| SHIM,0.80T (Ref # 92025J)                | 92025-1082  | AR       |
| SHIM,0.90T (Ref # 92025K)                | 92025-1083  | AR       |
| UNAVAILABLE IN PRICE BOOK (Ref # 29025L) | 29025-1084  | AR       |
| UNAVAILABLE IN PRICE BOOK (Ref # 29025M) | 29025-1085  | AR       |

# 1982 Shaft PARTS LIST

## FRONT BEVEL GEARS

| ITEM NAME                           | PART NUMBER | QUANTITY |
|-------------------------------------|-------------|----------|
| SHIM,0.10T (Ref # 92025N)           | 92025-1115  | AR       |
| COLLAR,L=22.8M/M (Ref # 92027)      | 92027-1152  | AR       |
| COLLAR,L=22.9M/M (Ref # 92027A)     | 92027-1153  | AR       |
| COLLAR,L=23.0M/M (Ref # 92027B)     | 92027-1154  | AR       |
| COLLAR,L=23.1M/M (Ref # 92027C)     | 92027-1155  | AR       |
| COLLAR,L=23.2M/M (Ref # 92027D)     | 92027-1156  | AR       |
| COLLAR,L=23.3M/M (Ref # 92027E)     | 92027-1157  | AR       |
| COLLAR,L=23.4M/M (Ref # 92027F)     | 92027-1158  | AR       |
| COLLAR,L=23.5M/M (Ref # 92027G)     | 92027-1159  | AR       |
| COLLAR,L=23.6M/M (Ref # 92027H)     | 92027-1160  | AR       |
| COLLAR,L=23.7M/M (Ref # 92027I)     | 92027-1161  | AR       |
| COLLAR,L=23.8M/M (Ref # 92027J)     | 92027-1162  | AR       |
| COLLAR,L=23.9M/M (Ref # 92027K)     | 92027-1163  | AR       |
| COLLAR,L=24.0M/M (Ref # 92027L)     | 92027-1164  | AR       |
| COLLAR,L=24.1M/M (Ref # 92027M)     | 92027-1165  | AR       |
| BRG,N,7E-HK1412 (Ref # 92046)       | 92046-037   | 1        |
| OIL SEAL SB12205 (Ref # 92049)      | 92049-004   | 1        |
| OIL SEAL,TC14244.8 (Ref # 92049A)   | 92049-1037  | 1        |
| OIL SEAL (Ref # 92049B)             | 92049-1069  | 1        |
| "0" RING,65MM (Ref # 92055)         | 671B2565    | 2        |
| "0" RING,I.D=18.64MM (Ref # 92055A) | 92055-1044  | 1        |
| SPRING,CAM DAMPER (Ref # 92081)     | 92081-1117  | 1        |
| BEARING (Ref # 92116)               | 92116-1003  | 2        |
| BRG,ROLLER,4T-30305 (Ref # 92116A)  | 92116-1006  | 1        |
| BOLT,SOCKET,8X30 (Ref # 120)        | 120P0830    | 8        |
| BOLT-FLANGED,6X100 (Ref # 130)      | 130G06100   | 1        |
| BOLT-FLANGED,6X115 (Ref # 130A)     | 130G06115   | 3        |
| BOLT,FLANGED,6X55 (Ref # 130B)      | 130G0655    | 3        |
| BOLT-FLANGED,6X70 (Ref # 130C)      | 130G0670    | 2        |