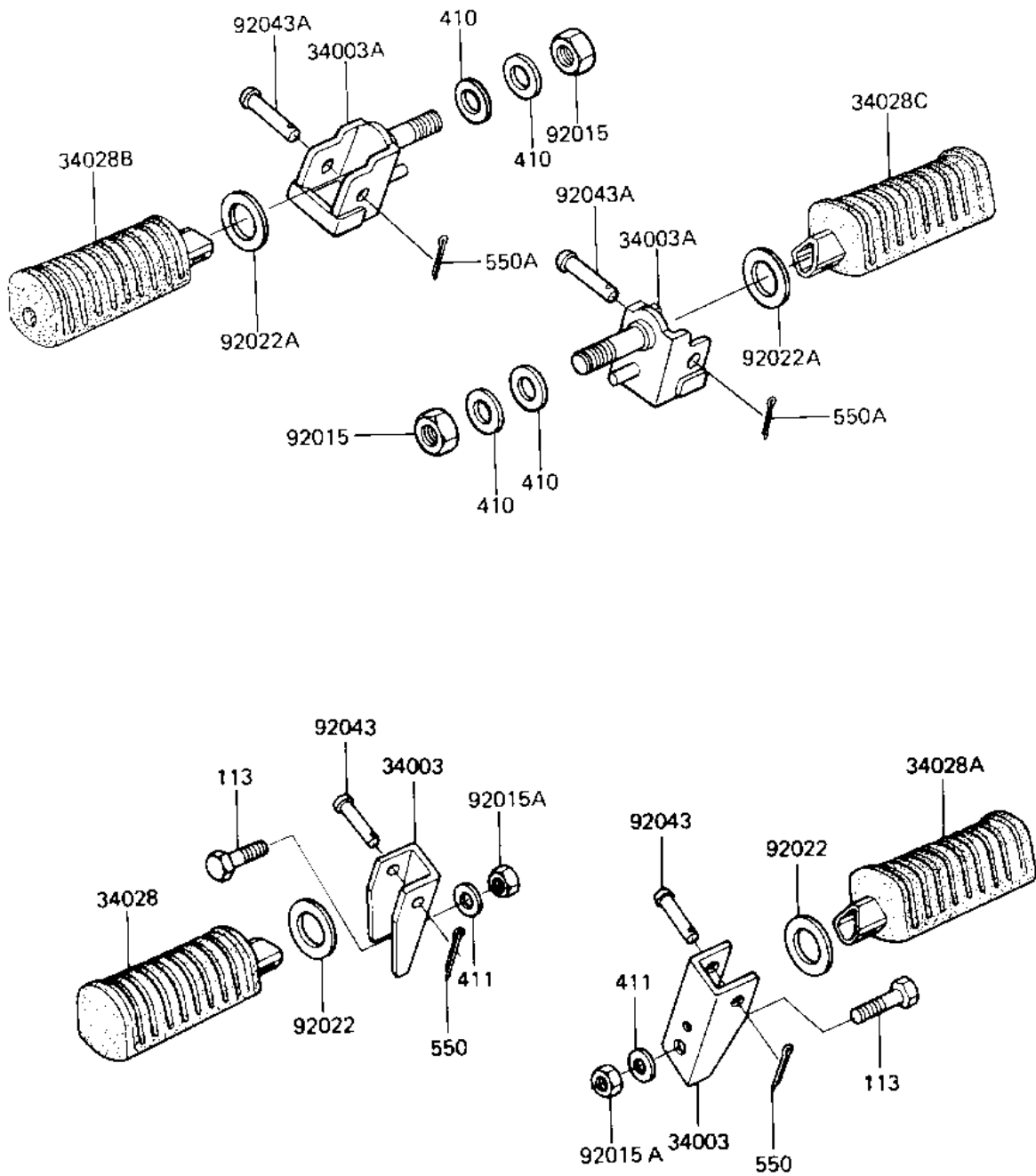


1983 Shaft PARTS DIAGRAM

FOOTRESTS

F2160-0039



1983 Shaft PARTS LIST

FOOTRESTS

| ITEM NAME | PART NUMBER | QUANTITY |
|-------------------------------------|-------------|----------|
| HOLDER,REAR FOOTREST (Ref # 34003) | 34003-1025 | 2 |
| HOLDER-STEP (Ref # 34003A) | 34003-1091 | 2 |
| STEP,RR FOOTREST,L.H (Ref # 34028) | 34028-1024 | 1 |
| STEP,RR FOOTREST,R.H (Ref # 34028A) | 34028-1025 | 1 |
| STEP-ASSY,FR,LH (Ref # 34028B) | 34027-1106 | 1 |
| STEP-ASSY,FR,RH (Ref # 34028C) | 34027-1107 | 1 |
| NUT-LOCK,12MM (Ref # 92015) | 92019-009 | 2 |
| NUT,LOCK,10MM (Ref # 92015A) | 92019-021 | 2 |
| WASHER-PLAIN (Ref # 92022) | 92022-181 | 2 |
| WASHER,PLAIN (Ref # 92022A) | 92022-250 | 2 |
| PIN (Ref # 92043) | 92043-1464 | 2 |
| PIN,FOOTREST BAR FIT (Ref # 92043A) | 92043-115 | 2 |
| BOLT,HEX HEAD 10X40 (Ref # 113) | 92001-1253 | 2 |
| WASHER PLAIN 12MM (Ref # 410) | 410B1200 | 4 |
| WASHER PLAIN 10MM (Ref # 411) | 411B1000 | 2 |
| PIN,COTTER,2.0X12 (Ref # 550) | 550D2012 | 2 |
| PIN,COTTER,2.5X15 (Ref # 550A) | 550D2515 | 2 |