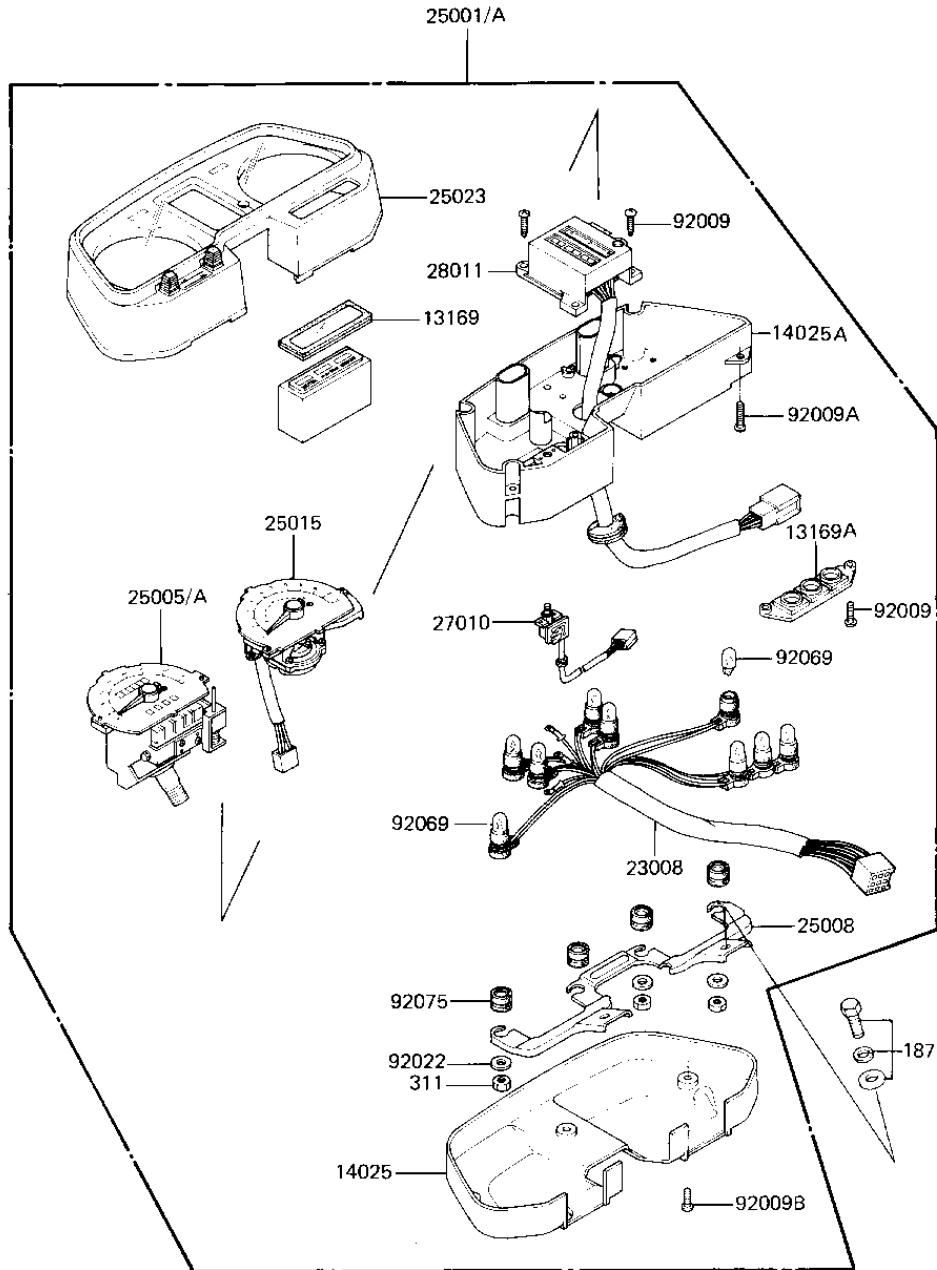


1982 GPz PARTS DIAGRAM

METERS (KZ1100-B2)



F2530-0126



1982 GPz PARTS LIST

METERS (KZ1100-B2)

| ITEM NAME | PART NUMBER | QUANTITY |
|---|-------------|----------|
| PLATE,PILOT BOX (Ref # 13169) | 13169-1508 | 1 |
| PLATE,BULB SOCKET (Ref # 13169A) | 13169-1556 | 1 |
| COVER,METER,LWR (Ref # 14025) | 14025-1473 | 1 |
| COVER,METER UNIT (Ref # 14025A) | 14025-1951 | 1 |
| SOCKET-ASSY,METER (Ref # 23008) | 23008-1149 | 1 |
| METER-ASSY,MPH (Ref # 25001) | 25001-1315 | 1 |
| METER-ASSY,KPH (Canada) (Ref # 25001A) | 25001-1316 | 1 |
| SPEEDOMETER,MPH (Ref # 25005) | 25005-1175 | 1 |
| SPEEDOMETER,KPH (Canada) (Ref # 25005A) | 25005-1180 | 1 |
| BRACKET-METER (Ref # 25008) | 25008-1057 | 1 |
| TACHOMETER,X1000R/MIN (Ref # 25015) | 25015-1232 | 1 |
| COVER-METER CASE,UPP (Ref # 25023) | 25023-1124 | 1 |
| SWITCH,TACHO/VOLT (Ref # 27010) | 27010-1062 | 1 |
| METER,FUEL & WARNING (Ref # 28011) | 28011-1029 | 1 |
| SCREW,TAPPING,4X14 (Ref # 92009) | 92009-1140 | 4 |
| SCREW,TAPPING,4X20 (Ref # 92009A) | 92009-1141 | 4 |
| SCREW,TAPPING,4X12 (Ref # 92009B) | 92009-1142 | 3 |
| WASHER,PLAIN,6MM (Ref # 92022) | 92022-263 | 4 |
| BULB,12V3.4W (Ref # 92069) | 92069-1007 | 9 |
| DAMPER,METER BRACKET (Ref # 92075) | 92075-1385 | 4 |
| BOLT 6X14 (Ref # 187) | 187B0614 | 2 |
| NUT,5MM (Ref # 311) | 311B0500 | 4 |