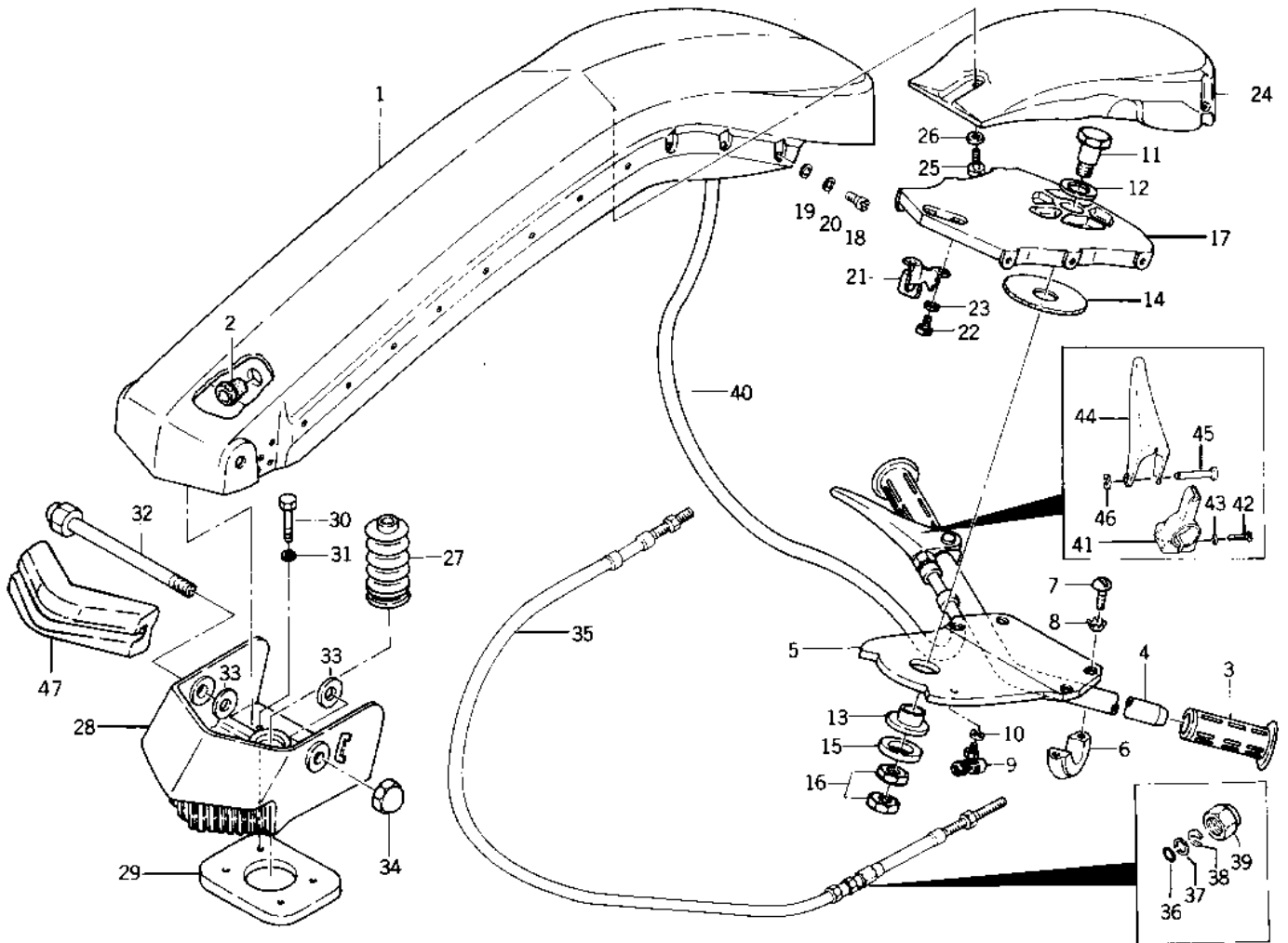


1976 JS400 PARTS DIAGRAM

HANDLE POLE/CABLES



1976 JS400 PARTS LIST

HANDLE POLE/CABLES

| ITEM NAME | PART NUMBER | QUANTITY |
|-------------------------------------|--------------|----------|
| UNAVAILABLE IN PRICE BOOK (Ref # 1) | 59166-513-8A | 1 |
| GROMMET (Ref # 2) | 92071-530 | 1 |
| GRIP,HANDLE,RH (Ref # 3) | 46075-3704 | 2 |
| HANDLEBAR (Ref # 4) | 32032-3017 | 1 |
| PLATE,HANDLE BAR (Ref # 5) | 59086-534 | 1 |
| CLAMP,HANDLE PIPE (Ref # 6) | 92037-503 | 2 |
| SCREW,8X25 (Ref # 7) | 221R0825 | 4 |
| WASHER (Ref # 8) | 92095-511 | 4 |
| JOINT-BALL (Ref # 9) | 59266-3707 | 1 |
| WASHER-SPRING,6MM (Ref # 10) | 461S0600 | 1 |
| BOLT 18X46 (Ref # 11) | 92003-527 | 1 |
| WASHER (Ref # 12) | 92022-511 | 1 |
| BUSH (Ref # 13) | 92028-508 | 1 |
| BUSH (Ref # 14) | 92028-501 | 1 |
| WASHER (Ref # 15) | 92022-571 | 1 |
| NUT 18M/M (Ref # 16) | 92015-506 | 2 |
| BRACKET,HANDLE SUPORT (Ref # 17) | 59016-552 | 1 |
| SCREW,6X18 (Ref # 18) | 220R0618 | 6 |
| WASHER (Ref # 19) | 411S0600 | 6 |
| WASHER-SPRING,6MM (Ref # 20) | 461S0600 | 6 |
| HOLDER,CABLE (Ref # 21) | 16065-509 | 1 |
| SCREW,PAN HEAD,6X12 (Ref # 22) | 220R0612 | 2 |
| WASHER-SPRING,6MM (Ref # 23) | 461S0600 | 2 |
| FLOAT ASSY, HANDLE (Ref # 24) | 16031-506 | 1 |
| SCREW 0.16X0.5 (Ref # 25) | 92011-562 | 3 |
| WASHER (Ref # 26) | 92022-563 | 3 |
| COVER,WIRE (Ref # 27) | 59176-512 | 1 |
| BRACKET,POLE (Ref # 28) | 59016-548-9H | 1 |
| PLATE (Ref # 29) | 59086-518 | 1 |

1976 JS400 PARTS LIST

HANDLE POLE/CABLES

| ITEM NAME | PART NUMBER | QUANTITY |
|---------------------------------|-------------|----------|
| BOLT-8X30MM (Ref # 30) | 110R0830 | 4 |
| WASHER (Ref # 31) | 411S0800 | 4 |
| BOLT,14X183 (Ref # 32) | 92001-3018 | 1 |
| WASHER (Ref # 33) | 92022-507 | 2 |
| NUT 14M/M (Ref # 34) | 92015-507 | 1 |
| CABLE,STEERING (Ref # 35) | 59406-3001 | 1 |
| "O" RING (Ref # 36) | 670B2011 | 1 |
| WASHER (Ref # 37) | 92022-535 | 1 |
| 'C'RING (Ref # 38) | 92036-501 | 1 |
| NUT 20 M/M (Ref # 39) | 92015-526 | 1 |
| THROTTLE CABLE ASS'Y (Ref # 40) | 59206-502 | 1 |
| BRACKET,THROTTLE LEV (Ref # 41) | 11034-3009 | 1 |
| SCREW 6X30 (Ref # 42) | 214R0630 | 1 |
| WASHER-SPRING,6MM (Ref # 43) | 461S0600 | 1 |
| LEVER,THROTTLE (Ref # 44) | 59126-509 | 1 |
| PIN,THROTTLE (Ref # 45) | 92043-508 | 1 |
| RING,SNAP (Ref # 46) | 92036-518 | 1 |
| DAMPER (Ref # 47) | 92075-519 | 1 |