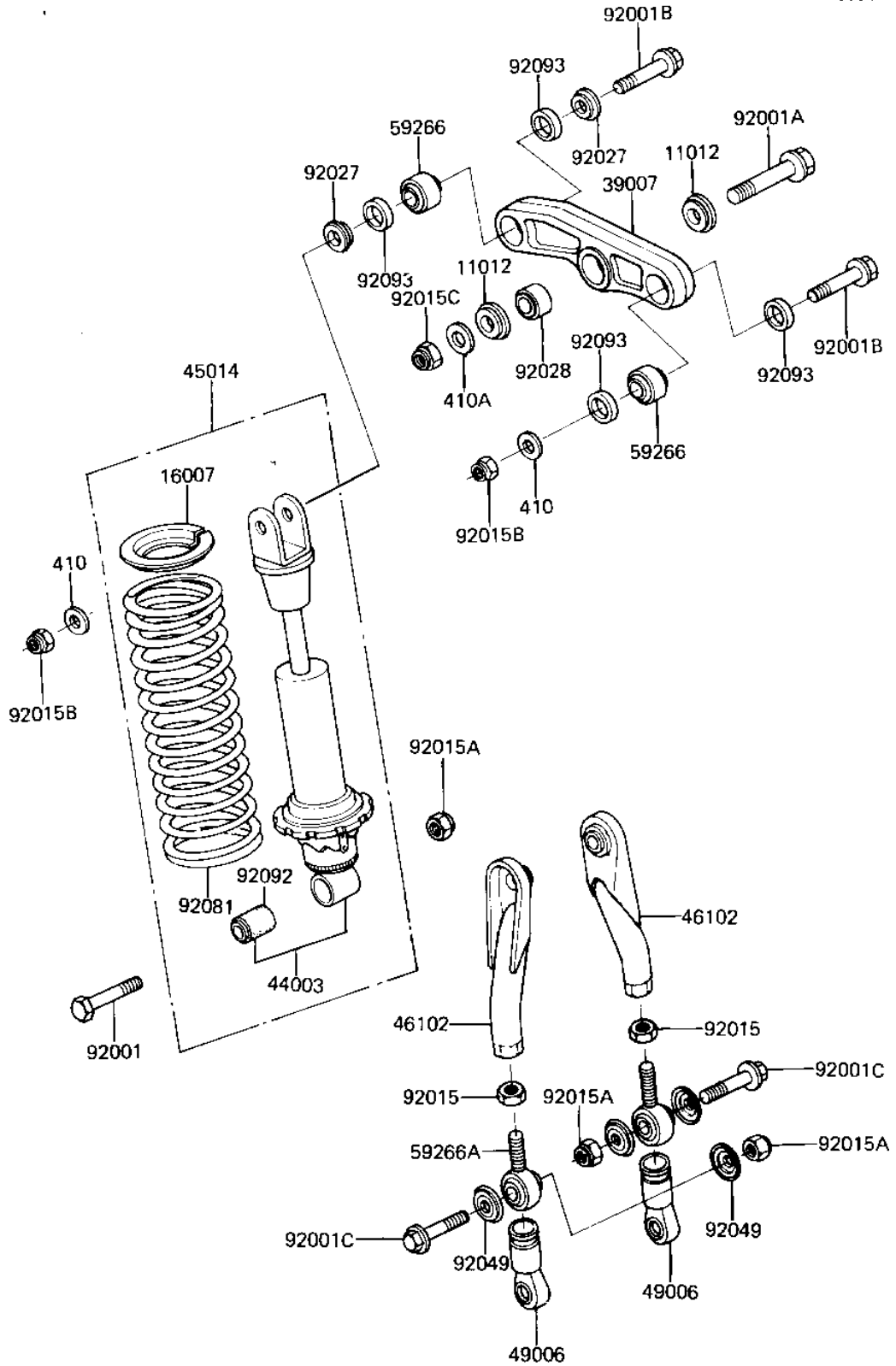


1983 KDX80 PARTS DIAGRAM

REAR SUSPENSION/SHOCK ABSORBER

F2150-0004



1983 KDX80 PARTS LIST

REAR SUSPENSION/SHOCK ABSORBER

ITEM NAME	PART NUMBER	QUANTITY
CAP,SUSPENSION ARM (Ref # 11012)	11012-1117	2
SEAT-SPRING,REAR SHOC (Ref # 16007)	16007-1040	1
ARM,SUSPENSION (Ref # 39007)	39007-1004	1
DAMPER-ASSY,REAR SHOC (Ref # 44003)	44003-1144	1
SHOCK ABSBR RR (Ref # 45014)	45014-1134	1
ROD,UNI TRAK (Ref # 46102)	46102-1023	2
BOOT,UNITRAK (Ref # 49006)	49006-1049	2
JOINT-BALL (Ref # 59266)	59266-1051	2
JOINT,BALL (Ref # 59266A)	59266-1005	2
BOLT,HEX HEAD,10X44 (Ref # 92001)	92001-1299	1
BOLT,14X56 (Ref # 92001A)	92001-1363	1
BOLT,12X48 (Ref # 92001B)	92001-1364	2
BOLT,10X34 (Ref # 92001C)	92001-1366	2
NUT 10MM (Ref # 92015)	92016-027	2
NUT,10MM (Ref # 92015A)	92015-1429	3
NUT-LOCK,12MM (Ref # 92015B)	92019-009	2
NUT-LOCK,14MM (Ref # 92015C)	92019-011	1
COLLAR (Ref # 92027)	92027-1304	2
BUSHING (Ref # 92028)	92028-1118	1
OIL SEAL,BALL JOINT (Ref # 92049)	92049-1072	4
SPRING,REAR SHOCK (Ref # 92081)	92081-1396	1
BUSHING-RUBBER,REAR S (Ref # 92092)	92092-1015	1
SEAL (Ref # 92093)	92093-1045	4
WASHER PLAIN 12MM (Ref # 410)	410B1200	2
WASHER PLAIN 14MM (Ref # 410A)	410B1400	1