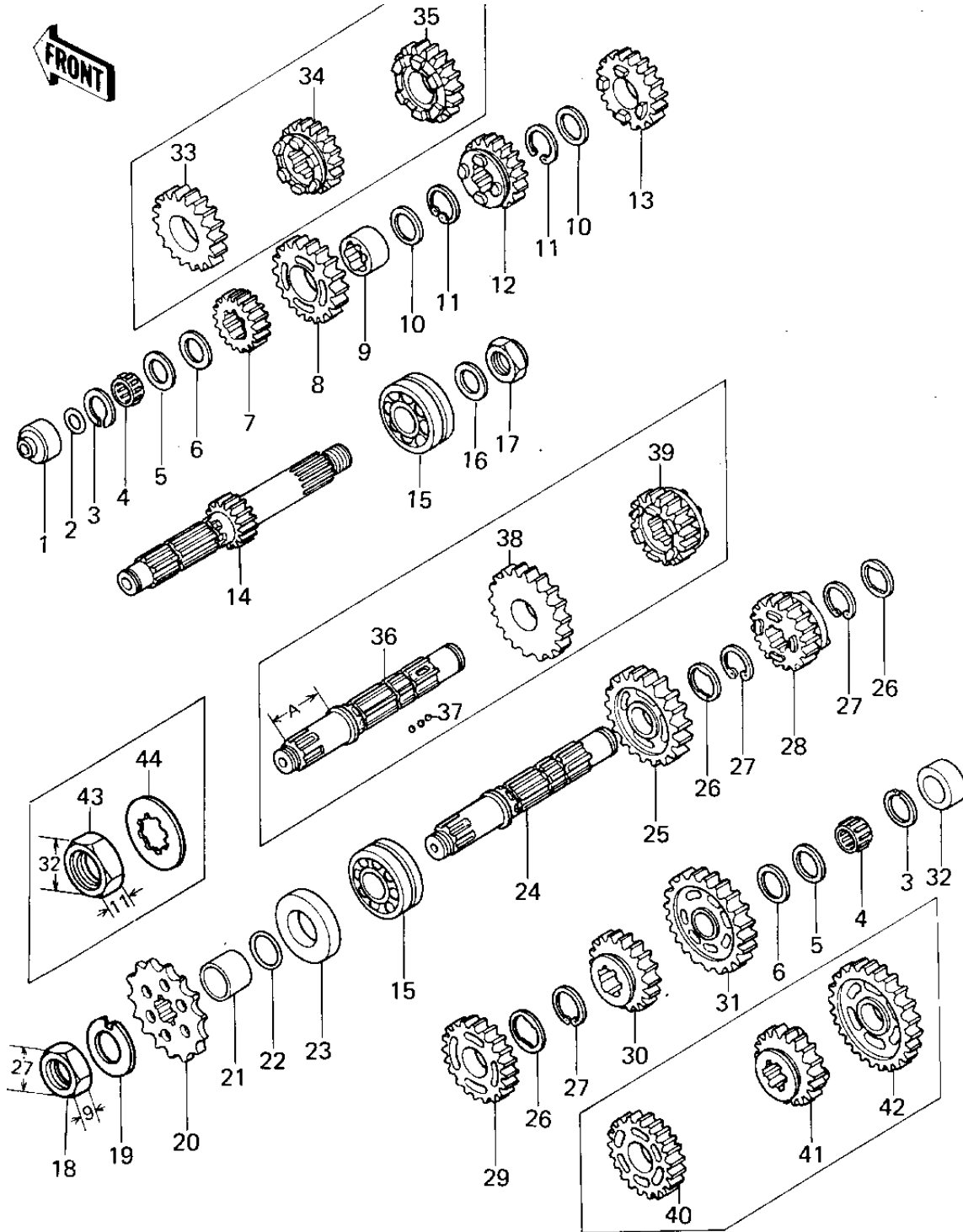


# 1977 KZ650-B1 PARTS DIAGRAM

## TRANSMISSION



# 1977 KZ650-B1 PARTS LIST

## TRANSMISSION

| ITEM NAME                      | PART NUMBER | QUANTITY |
|--------------------------------|-------------|----------|
| BUSHING,DRIVE SHAFT (Ref # 1)  | 92028-179   | 1        |
| "O" RING,7MM (Ref # 2)         | 670B1507    | 1        |
| CIRCLIP (Ref # 3)              | 92033-015   | 2        |
| BEARING,VS20/14A (Ref # 4)     | 92046-1030  | 2        |
| WASHER THRUST (Ref # 5)        | 92022-112   | AR       |
| SHIM-KICK SHAFT (Ref # 5)      | 92022-144   | AR       |
| WASHER,PLAIN (Ref # 5)         | 92022-1026  | AR       |
| WASHER THRUST (Ref # 6)        | 92022-113   | 2        |
| 2ND GEAR,DRIVE (Ref # 7)       | 13130-041   | 1        |
| TOP GEAR,DRIVE (Ref # 8)       | 13136-060   | 1        |
| BUSHING,DRV SHFT TOP (Ref # 9) | 92028-1007  | 1        |
| BUSHING,DRV SHFT TOP (Ref # 9) | 92028-1007  | 1        |
| WASHER PLAIN (Ref # 10)        | 92022-161   | 2        |
| CIRCLIP (Ref # 11)             | 92033-026   | 2        |
| 3RD GEAR,DRIVE (Ref # 12)      | 13132-044   | 1        |
| 4TH GEAR,DRIVE (Ref # 13)      | 13134-029   | 1        |
| SHAFT,DRIVE (Ref # 14)         | 13127-051   | 1        |
| BEARING,BALL (Ref # 15)        | 92045-035   | 2        |
| WASHER (Ref # 16)              | 92125-002   | 1        |
| NUT,20MM (Ref # 17)            | 92015-1555  | 1        |
| NUT 20MM (Ref # 18)            | 92016-028   | 1        |
| WASHER,LOCK,20MM (Ref # 19)    | 92024-044   | 1        |
| ENGINE SPROCKET,16T (Ref # 20) | 13144-063   | 1        |
| ENGINE SPROCKET,17T (Ref # 20) | 13144-1009  | (1       |
| COLLAR,ENG SPROCKET (Ref # 21) | 92027-288   | 1        |
| "O" RING (Ref # 22)            | 92055-035   | 1        |
| OIL SEAL SC325210 (Ref # 23)   | 92050-024   | 1        |
| SHAFT,OUTPUT (Ref # 24)        | 13128-044   | 1        |
| 2ND GEAR,OUTPUT (Ref # 25)     | 13131-052   | 1        |

# 1977 KZ650-B1 PARTS LIST

## TRANSMISSION

| ITEM NAME                        | PART NUMBER | QUANTITY |
|----------------------------------|-------------|----------|
| WASHER,LOCK (Ref # 26)           | 92024-069   | 3        |
| CIRCLIP,30MM (Ref # 27)          | 480J3000    | 3        |
| TOP GEAR,OUTPUT (Ref # 28)       | 13137-039   | 1        |
| 3RD GEAR,OUTPUT (Ref # 29)       | 13133-041   | 1        |
| 4TH GEAR,OUTPUT (Ref # 30)       | 13135-030   | 1        |
| LOW GEAR,OUTPUT (Ref # 31)       | 13129-056   | 1        |
| BUSHING,OUTPUT SHAFT (Ref # 32)  | 92028-180   | 1        |
| TOP GEAR,DRIVE SHAFT (Ref # 33)  | 13129-1045  | 1        |
| 3RD GEAR,DRIVE SHAFT (Ref # 34)  | 13129-1032  | 1        |
| 4TH GEAR,DRIVE SHAFT (Ref # 35)  | 13129-1044  | 1        |
| SHAFT,OUTPUT (Ref # 36)          | 13128-5005  | 1        |
| SHAFT,OUTPUT (Ref # 36)          | 13128-1012  | 1        |
| BALL STEEL 5/32' (Ref # 37)      | 600A0500    | 3        |
| 2ND GEAR,OUTPUT SHAFT (Ref # 38) | 13129-1047  | 1        |
| TOP GEAR,OUTPUT SHAFT (Ref # 39) | 13129-1033  | 1        |
| 3RD GEAR,OUTPUT SHAFT (Ref # 40) | 13129-1048  | 1        |
| 4TH GEAR,OUTPUT SHAFT (Ref # 41) | 13129-1049  | 1        |
| LOW GEAR,OUTPUT SHAFT (Ref # 42) | 13129-1046  | 1        |
| NUT,20MM (Ref # 43)              | 92015-1254  | 1        |
| WASHER (Ref # 44)                | 92200-1065  | 1        |