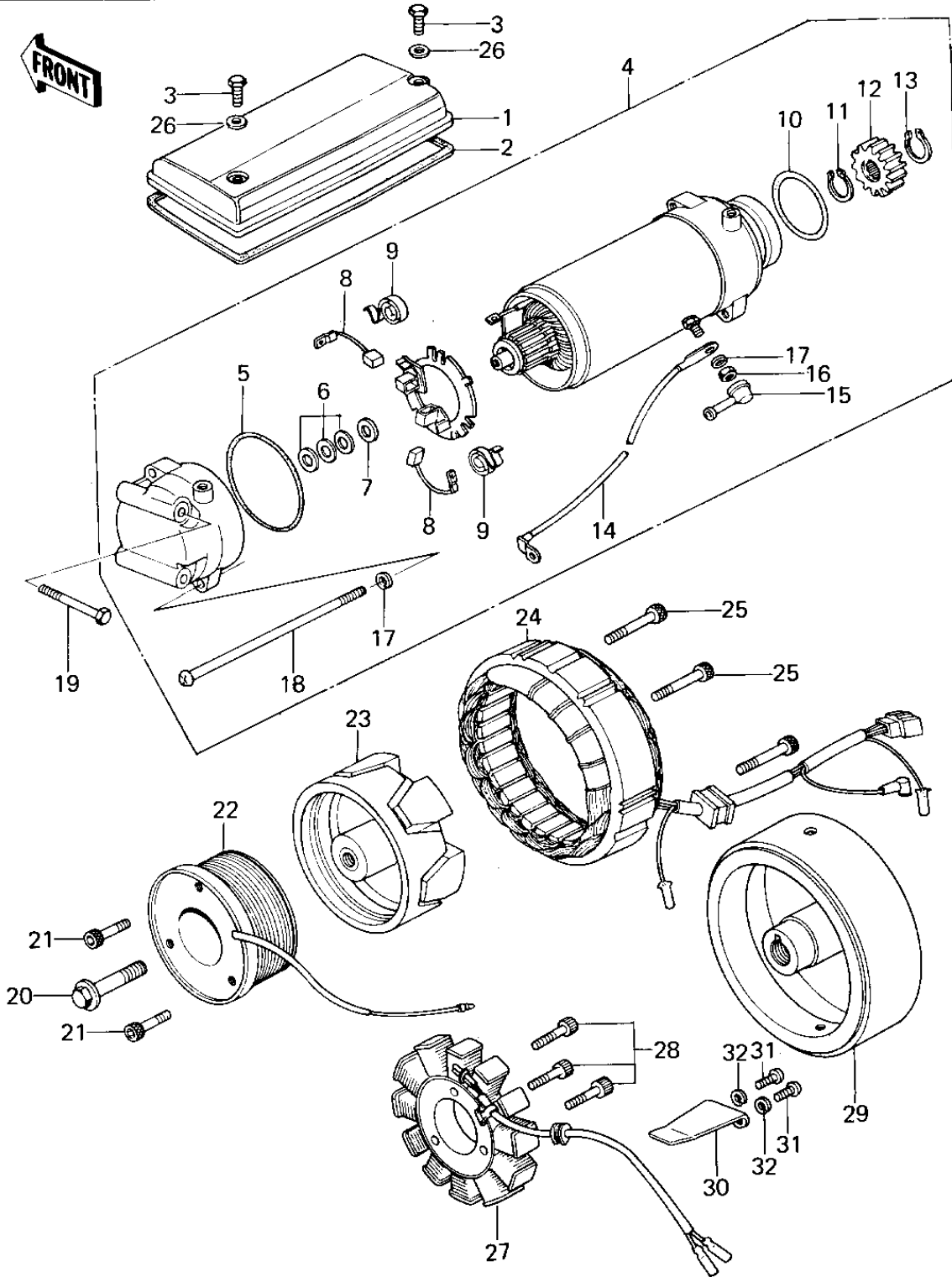


1978 KZ650-B2 PARTS DIAGRAM

GENERATOR/STARTER MOTOR



1978 KZ650-B2 PARTS LIST

GENERATOR/STARTER MOTOR

| ITEM NAME | PART NUMBER | QUANTITY |
|---------------------------------|-------------|----------|
| COVER,STARTER (Ref # 1) | 21165-003 | 1 |
| GASKET,STARTER COVER (Ref # 2) | 21166-003 | 1 |
| BOLT (6X10) (Ref # 3) | 110R0610 | 1 |
| STARTER-ELECTRIC (Ref # 4) | 21163-1022 | 1 |
| "0" RING,62MM (Ref # 5) | 21027-006 | 1 |
| WASHER,THRUST,0.2T (Ref # 6) | 21025-011 | 1 |
| WASHER,THRUST,1.6T (Ref # 7) | 21025-010 | 1 |
| CARBON BRUSH (Ref # 8) | 21039-003 | 1 |
| SPRING,CARBON BRUSH (Ref # 9) | 21040-003 | 1 |
| "0" RING,40M/M (Ref # 10) | 21027-008 | 1 |
| CIRCLIP (Ref # 11) | 92033-034 | 1 |
| PINION,STARTER (Ref # 12) | 21053-004 | 1 |
| CIRCLIP,13M/M (Ref # 13) | 92033-037 | 1 |
| WIRE-LEAD,STARTER (Ref # 14) | 26011-1099 | 1 |
| CAP,STARTING MOTOR (Ref # 15) | 21017-020 | 1 |
| NUT 6MM (Ref # 16) | 312B0600 | 1 |
| WASHER SPRING 6MM (Ref # 17) | 461F0600 | 1 |
| SCREW,PAN HEAD,6X130 (Ref # 18) | 21099-006 | 1 |
| BOLT-UPSET (Ref # 19) | 112G0660 | 1 |
| BOLT,10X40 (Ref # 20) | 92001-1201 | 1 |
| BOLT,ALLEN,6X18 (Ref # 21) | 120P0618 | 1 |
| COIL,FIELD (Ref # 22) | 21077-005 | 1 |
| ROTOR (Ref # 23) | 21007-033 | 1 |
| YOKE ASSY (Ref # 24) | 21076-024 | 1 |
| BOLT,ALLEN,6X32 (Ref # 25) | 120Q0632 | 1 |
| WASHER,PLAIN,6MM (Ref # 26) | 410D0600 | 1 |
| STATOR (Ref # 27) | 21003-1005 | 1 |
| BOLT-SOCKET,5X30 (Ref # 28) | 120P0530 | 1 |
| FLYWHEEL (Ref # 29) | 21050-1003 | 1 |

1978 KZ650-B2 PARTS LIST

GENERATOR/STARTER MOTOR

| ITEM NAME | PART NUMBER | QUANTITY |
|---------------------------------|-------------|----------|
| CLAMP,GENERATOR WIRE (Ref # 30) | 92037-1122 | 1 |
| SCREW PAN HEAD 5X12 (Ref # 31) | 220B0512 | 1 |
| WASHER SPRING 5MM (Ref # 32) | 461F0500 | 1 |