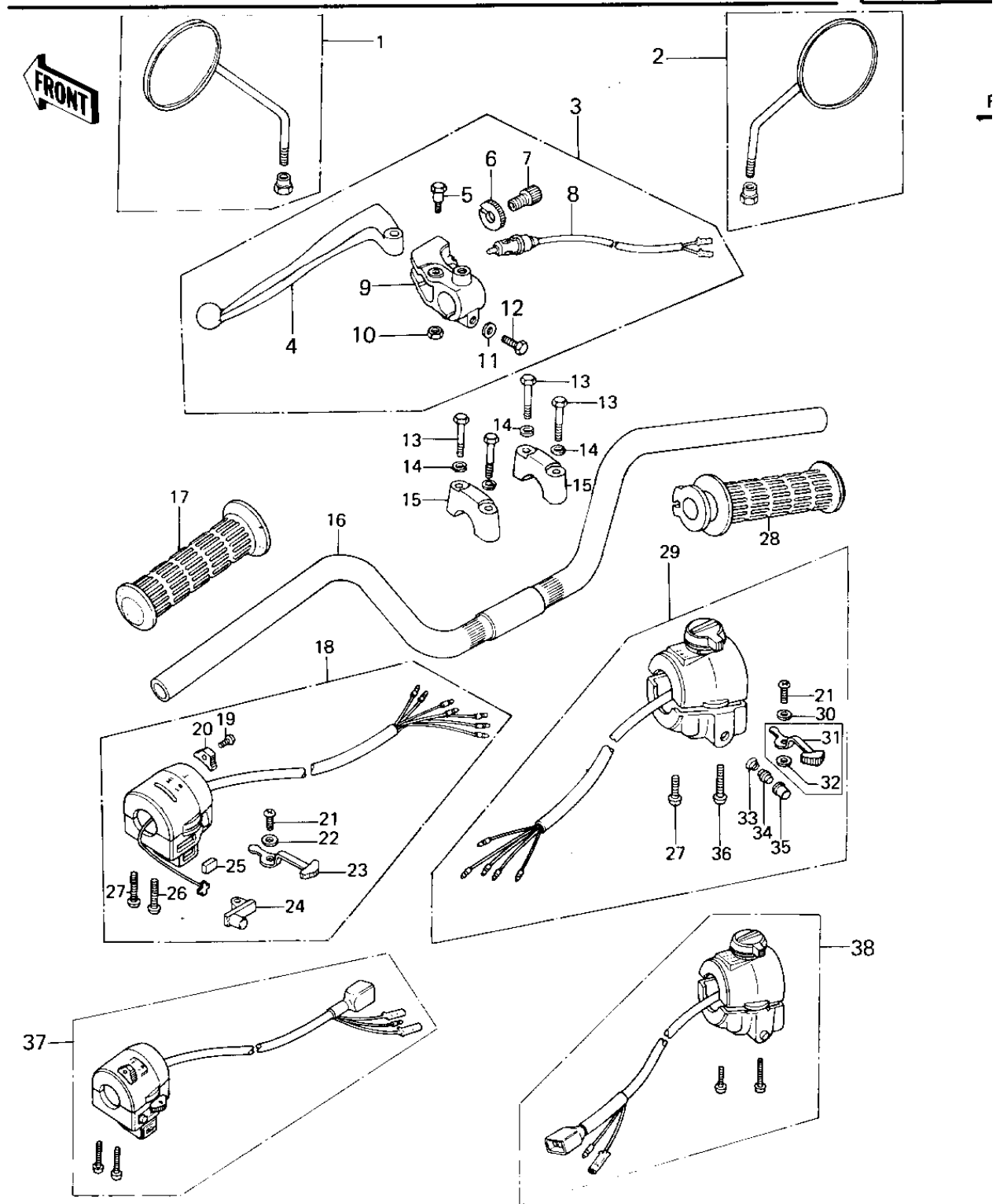


1978 KZ650-B2 PARTS DIAGRAM

HANDLEBAR



I

1978 KZ650-B2 PARTS LIST

HANDLEBAR

| ITEM NAME | PART NUMBER | QUANTITY |
|--------------------------------------|-------------|----------|
| REAR VIEW MIRROR,L.H (Ref # 1) | 56003-019 | 1 |
| REAR VIEW MIRROR,R.H (Ref # 2) | 56002-029 | 1 |
| LEVER ASSY,CLUTCH (Ref # 3) | 46076-054 | 1 |
| LEVER,CLUTCH (Ref # 4) | 46092-023 | 1 |
| BOLT,HEX HEAD (Ref # 5) | 92007-047 | 1 |
| NUT,CABLE ADJUST NUT (Ref # 6) | 46056-007 | 1 |
| SCREW CABLE ADJUST (Ref # 7) | 46055-003 | 1 |
| SWITCH,CLUTCH (Ref # 8) | 27043-002 | 1 |
| HOLDER,CLUTCH LEVER (Ref # 9) | 46094-019 | 1 |
| NUT,LOCK 6MM (Ref # 10) | 92017-014 | 1 |
| WASHER PLAIN 6MM (Ref # 11) | 410B0600 | 1 |
| BOLT HEX HEAD 6X25 (Ref # 12) | 110N0625 | 1 |
| BOLT 8X38 (Ref # 13) | 92001-1405 | 4 |
| WASHER SPRING 8MM (Ref # 14) | 461F0800 | 4 |
| HOLDER-HANDLEBAR (Ref # 15) | 46012-008 | 2 |
| HANDLEBAR (Ref # 16) | 46003-038 | 1 |
| HANDLEBAR (Ref # 16) | 46003-1026 | 1 |
| RUBBER,L.H GRIP (Ref # 17) | 46075-028 | 1 |
| CASE ASSY,L.H. (Ref # 18) | 46091-054 | 1 |
| CASE ASSY,L.H (Ref # 18) | 46091-055 | 1 |
| SCREW CNTSNK HD 3X8 (Ref # 19) | 221B0308A | 1 |
| KNOB,LIGHTING SW L.H (Ref # 20) | 46044-013 | 1 |
| SCREW PAN HEAD 3X5 (Ref # 21) | 220B0305A | 2 |
| WASHER (Ref # 22) | 92095-010 | 1 |
| KNOB,LIGHTING SW L.H (Ref # 23) | 46043-005 | 1 |
| BUTTON,HORN SWITCH (Ref # 24) | 46028-007 | 1 |
| UNAVAILABLE IN PRICE BOOK (Ref # 25) | 92012-019 | 1 |
| SCREW-PAN-CROS (Ref # 26) | 220B0535 | 1 |
| SCREW PAN HEAD 5X30 (Ref # 27) | 220B0530 | 2 |

1978 KZ650-B2 PARTS LIST

HANDLEBAR

| ITEM NAME | PART NUMBER | QUANTITY |
|----------------------------------|-------------|----------|
| GRIP ASSY,THROTTLE (Ref # 28) | 46019-038 | 1 |
| HOUSING ASSY,R.H. (Ref # 29) | 46091-1038 | 1 |
| WASHER PLAIN 3MM (Ref # 30) | 410B0300 | 1 |
| SWITCH ASSY,HORN BUTN (Ref # 33) | 27010-1009 | 1 |
| SWITCH ASSY,HORN BUTN (Ref # 34) | 27010-1009 | 1 |
| SWITCH ASSY,HORN BUTN (Ref # 35) | 27010-1009 | 1 |
| SCREW-PAN-CROS (Ref # 36) | 220B0540 | 1 |
| HOUSING ASSY,CONT,L.H (Ref # 37) | 46091-1048 | 1 |
| HOUSING ASSY,CONT,R.H (Ref # 38) | 46091-1047 | 1 |