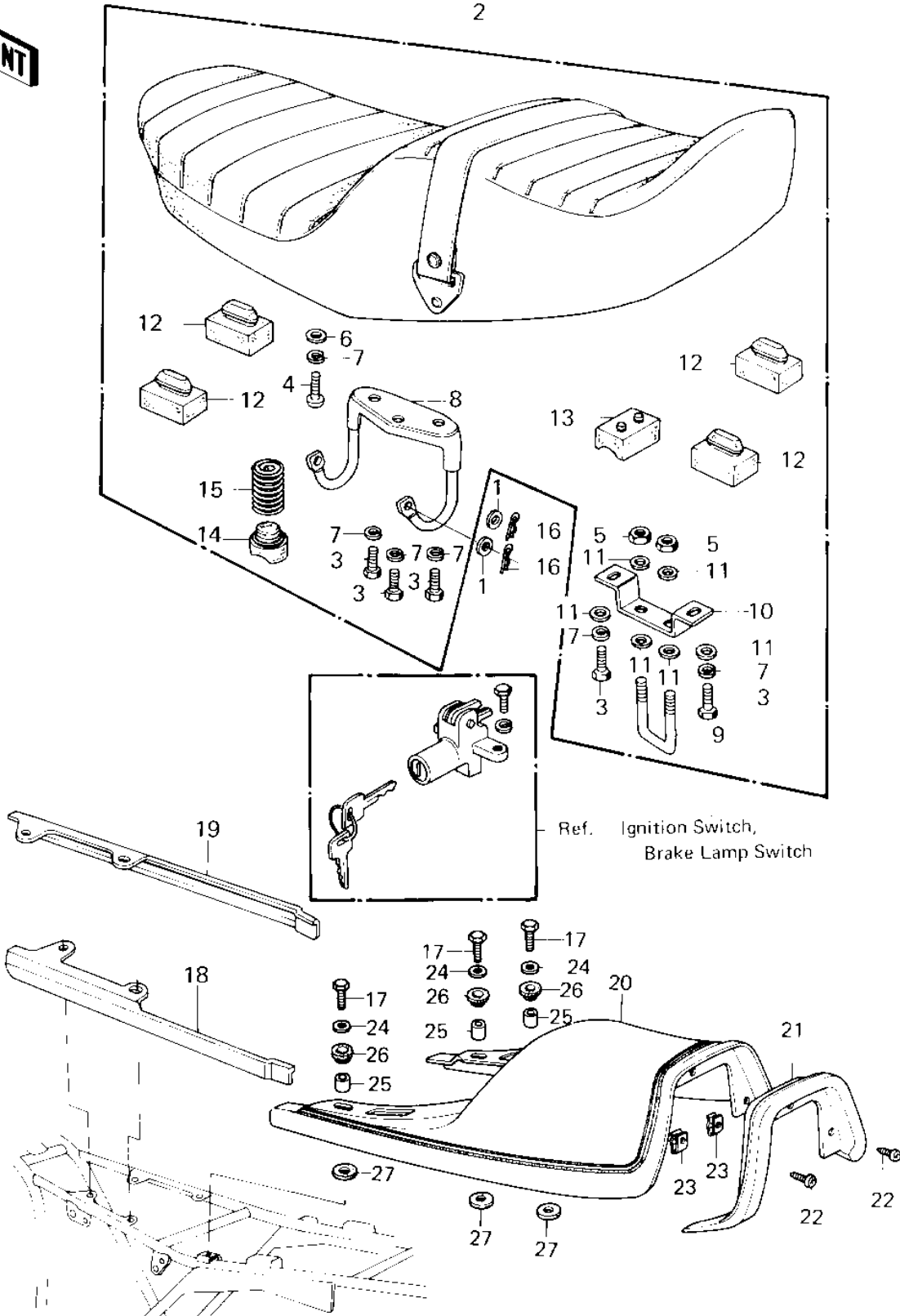


# 1980 LTD II PARTS DIAGRAM

SEAT/SEAT COVER



# 1980 LTD II PARTS LIST

## SEAT/SEAT COVER

ITEM NAME	PART NUMBER	QUANTITY
WASHER PLAIN 8MM (Ref # 1)	410B0800	2
SEAT-ASSY,DUAL (Ref # 2)	53001-1063	1
BOLT-UPSET 6X14 (Ref # 3)	112B0614	5
SCREW PAN HEAD 6X14 (Ref # 4)	220B0614	1
NUT 6MM (Ref # 5)	311B0600	4
WASHER PLAIN 6MM (Ref # 6)	411B0600	1
WASHER SPRING 6MM (Ref # 7)	461F0600	6
HINGE (Ref # 8)	53009-029	1
CATCH, SEAT (Ref # 9)	53056-002	1
BRACKET,SEAT CATCH (Ref # 10)	53058-002	1
WASHER 6.5X20X1.6T (Ref # 11)	92022-125	6
DAMPER RUBBER (Ref # 12)	92075-099	4
UNAVAILABLE IN PRICE BOOK (Ref # 13)	92075-13	1
DAMPER RUBBER (Ref # 14)	92075-276	1
SPRING (Ref # 15)	92081-147	1
PIN,SNAP (Ref # 16)	554A0800	2
BOLT 6X22 (Ref # 17)	112B0622	5
COVER,FRONT SEAT,L.H (Ref # 18)	53043-014-D2	1
COVER,FRONT SEAT,R.H (Ref # 19)	53043-015-D2	1
COVER,RR SEAT,R.RED (Ref # 20)	53043-010-D2	1
COVER,SEAT (Ref # 21)	53057-005	1
SCREW,SEAT COVER FIT (Ref # 22)	92008-010	3
NUT,SEAT COVER (Ref # 23)	92018-006	3
WASHER,PLAIN,7MM (Ref # 24)	92022-228	5
COLLAR (Ref # 25)	92027-241	5
RUBBER,FENDER COVER (Ref # 26)	92075-174	5
DAMPER RUBBER (Ref # 27)	92075-175	5