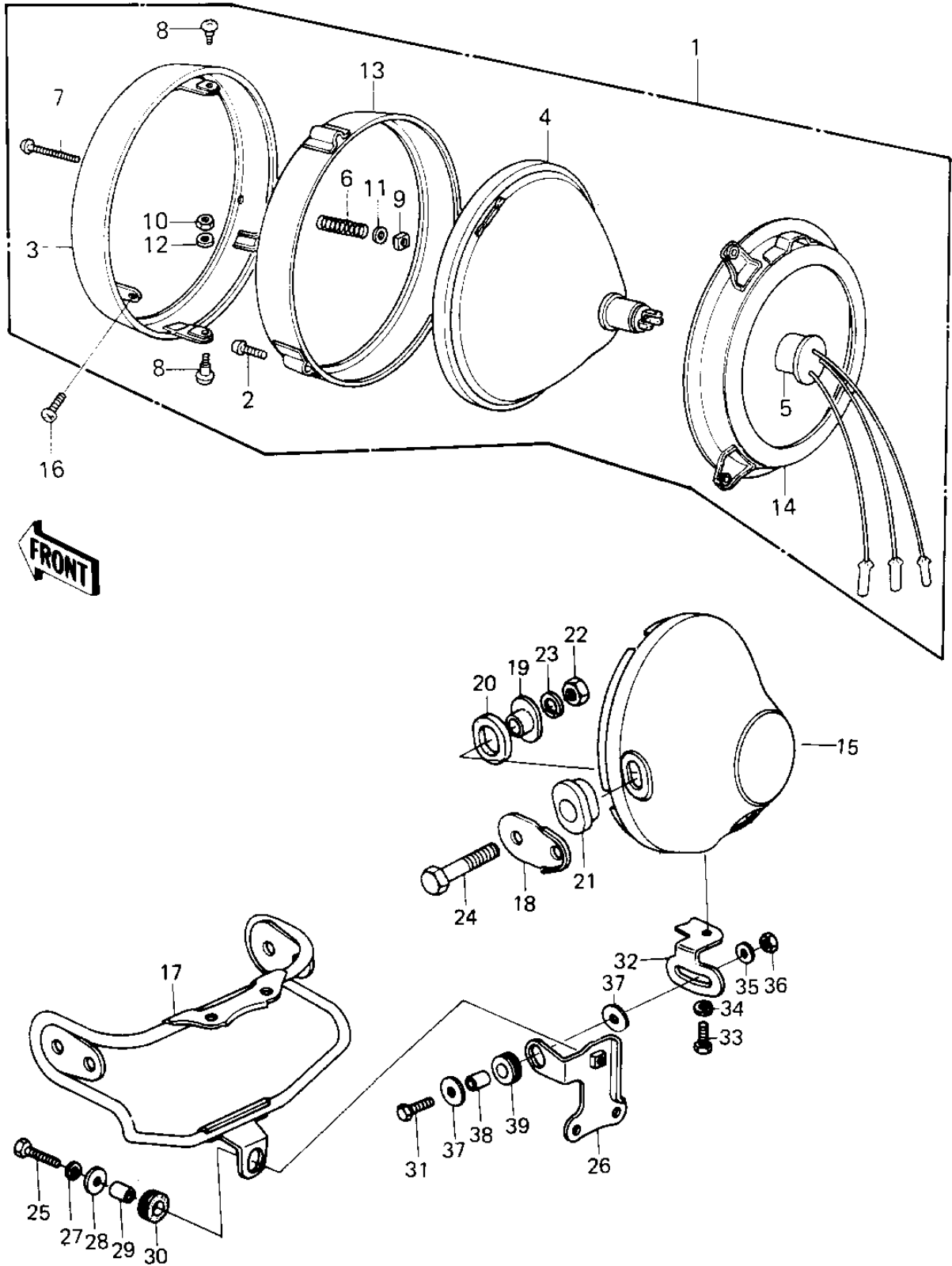


# 1980 LTD II PARTS DIAGRAM

## HEADLIGHT



# 1980 LTD II PARTS LIST

## HEADLIGHT

ITEM NAME	PART NUMBER	QUANTITY
LAMP UNIT,HEAD (Ref # 1)	23003-017	1
SCREW PAN HEAD 3X12 (Ref # 2)	220B0312	2
RIM,HEAD LAMP (Ref # 3)	23006-038	1
SEALD BEAM UNIT (Ref # 4)	23007-041	1
SOCKET ASSY,HEAD LAM (Ref # 5)	23008-037	1
SPRING FOCUS ADJUST (Ref # 6)	23014-005	1
SCREW FORCUS ADJUST (Ref # 7)	23019-021	1
SCREW-PAN HEAD,5X12 (Ref # 8)	23019-023	2
NUT,4MM (Ref # 9)	23020-018	1
NUT,HEAD LAMP RIM FI (Ref # 10)	23020-023	2
WASHER (Ref # 11)	23021-004	1
WASHER-PLAIN,5MM (Ref # 12)	23021-012	2
RING,HEAD LAMP MOUNT (Ref # 13)	23072-001	1
RING,HEAD LAMP MOUNT (Ref # 14)	23074-001	1
BODY-COMP-HEAD LAMP (Ref # 15)	23005-1016	1
SCREW,PAN HEAD,5X14 (Ref # 16)	23019-022	2
BRACKET HEAD LAMP (Ref # 17)	11034-1365	1
PLATE,METER BRACKET (Ref # 18)	13169-1141	2
COLLAR,HEAD LIGHT (Ref # 19)	23052-011	2
DAMPER RUBBER (Ref # 20)	23066-021	2
DAMPER RUBBER (Ref # 21)	23066-022	2
NUT 10MM (Ref # 22)	315B1000	2
WASHER SPRING 10MM (Ref # 23)	461F1000	2
BOLT,10MM (Ref # 24)	92007-024	2
BOLT-UPSET (Ref # 25)	112G0625	1
BRACKET,METER (Ref # 26)	11034-1366	1
WASHER SPRING 6MM (Ref # 27)	461F0600	1
WASHER 6.5X20X1.6T (Ref # 28)	92022-125	1
COLLAR (Ref # 29)	92027-241	1

# 1980 LTD II PARTS LIST

## HEADLIGHT

ITEM NAME	PART NUMBER	QUANTITY
DAMPER RUBBER,RR FEN (Ref # 30)	92075-209	1
BOLT-UPSET (Ref # 31)	112G0630	1
BRACKET (Ref # 32)	11034-1676	1
BOLT-SMALL-UPSET,8X1 (Ref # 33)	115G0816	1
WASHER SPRING 8MM (Ref # 34)	461F0800	1
WASHER PLAIN 6MM (Ref # 35)	411B0600	1
NUT,LOCK 6MM (Ref # 36)	92017-014	1
WASHER 6.5X20X1.6T (Ref # 37)	92022-125	2
COLLAR (Ref # 38)	92027-241	1
DAMPER RUBBER,RR FEN (Ref # 39)	92075-209	1