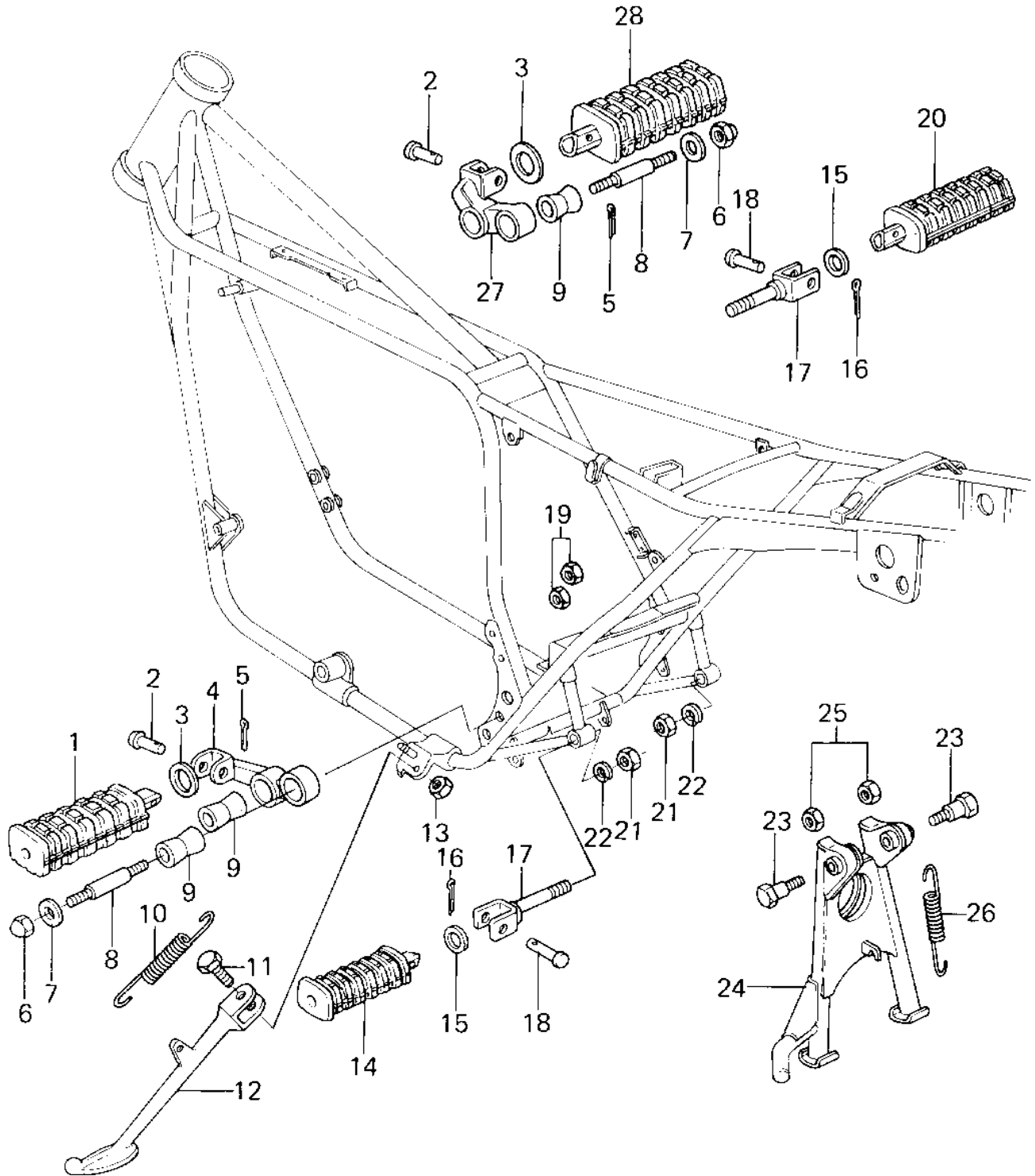


1978 Z1R PARTS DIAGRAM

FOOTRESTS/STANDS (78 D1)



1978 Z1R PARTS LIST

FOOTRESTS/STANDS (78 D1)

ITEM NAME	PART NUMBER	QUANTITY
STEP,FOOTREST,FRONT, (Ref # 1)	34028-1007	1
PIN-FOOTREST BAR FIT (Ref # 2)	92043-080	2
WASHER,PLAIN (Ref # 3)	92022-250	2
BRACKET,FOOTREST,L.H (Ref # 4)	34003-036	1
PIN COTTER 2.5X16 (Ref # 5)	550D2516	2
NUT,CAP AND LOCK,8MM (Ref # 6)	92019-013	4
CAP,FOOTRESTBAR (Ref # 7)	92102-010	4
STUD,FOOTREST BAR FI (Ref # 8)	92004-048	4
DAMPER RUBBER,FOOTRS (Ref # 9)	92075-140	4
SPRING,SIDE STAND (Ref # 10)	34025-005	1
BOLT-SIDE STAND (Ref # 11)	92003-079	1
STAND-SIDE (Ref # 12)	34024-1015	1
NUT 10MM (Ref # 13)	315B1000	1
STEP,FOOTREST,REAR,L (Ref # 14)	34028-1009	1
WASHER-PLAIN (Ref # 15)	92022-181	2
PIN,COTTER,2.0X12 (Ref # 16)	550D2012	2
BRACKET,FOOTREST BAR (Ref # 17)	34029-014	2
PIN (Ref # 18)	92043-1464	2
NUT 10MM (Ref # 19)	315B1000	4
STEP,FOOTREST,REAR,R (Ref # 20)	34028-1010	1
NUT,10MM (Ref # 21)	314B1000	2
WASHER SPRING 10MM (Ref # 22)	461F1000	2
SHAFT MAIN STAND (Ref # 23)	34019-014	2
STAND-MAIN (Ref # 24)	34011-1004	1
NUT,MAIN STAND FITT (Ref # 25)	92016-044	2
SPRING,MAIN STAND (Ref # 26)	34023-012	1
BRACKET,FOOTREST,R.H (Ref # 27)	34003-037	1
STEP,FOOTREST,FRONT, (Ref # 28)	34028-1008	1