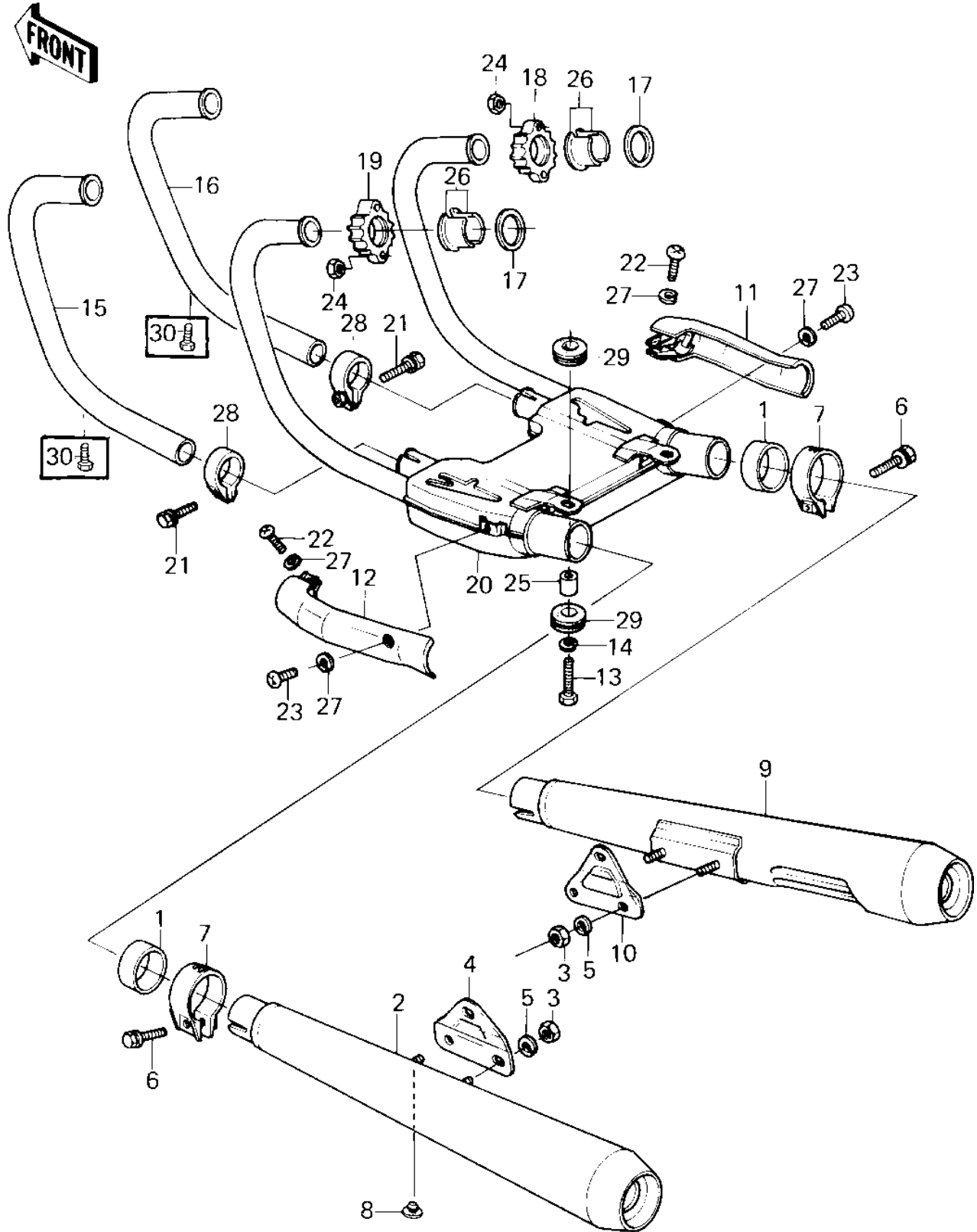


# 1980 Z1R PARTS DIAGRAM

MUFFLERS (80 D3)



# 1980 Z1R PARTS LIST

## MUFFLERS ('80 D3)

ITEM NAME	PART NUMBER	QUANTITY
GASKET,MUFFLER CONNE (Ref # 1)	11009-1035	2
MUFFLER,L.H (Ref # 2)	18002-1044	1
NUT,8MM (Ref # 3)	311B0800	4
BRACKET,MUFFLER L.H (Ref # 4)	32069-1037	1
WASHER SPRING 8MM (Ref # 5)	461F0800	4
BOLT,HEX HEAD,8X35 (Ref # 6)	92001-1094	2
CLAMP,MUFFLER CONNEC (Ref # 7)	92037-1055	2
DAMPER RUBB MAIN STA (Ref # 8)	92075-015	1
MUFFLER,R.H (Ref # 9)	18002-1034	1
BRACKET,MUFFLER.R.H (Ref # 10)	32069-1038	1
COVER,MUFFLER,R.H (Ref # 11)	14025-1017	1
COVER,MFFLER L.H (Ref # 12)	14025-1120	1
BOLT,FLANGED,8X35 (Ref # 13)	92001-1577	2
WASHER SPRING 8MM (Ref # 14)	461F0800	2
PIPE,EXHAUST,L.H.INN (Ref # 15)	18049-1030	1
PIPE,EXHAUST,R.H.INN (Ref # 16)	18049-1031	1
GASKET,EXHAUST PIPE (Ref # 17)	11009-1906	4
HOLDER,EXHAUST PIPE, (Ref # 18)	18069-1004	2
HOLDER,EXHAUST PIPE, (Ref # 19)	18069-1005	2
BOX,MUFFLER CONNECT (Ref # 20)	49070-1018	1
BOLT,HEX HEAD,8X30 (Ref # 21)	92001-1067	2
SCREW,PAN HEAD,6X20 (Ref # 22)	92009-1019	2
SCREW-PAN-CROS,6X8 (Ref # 23)	220C0608	2
NUT,LOCK,8MM (Ref # 24)	92017-013	8
COLLAR (Ref # 25)	92027-1064	2
INSERT,EXHAUST PIPE (Ref # 26)	92027-170	8
WASHER-SPRING,6MM,BL (Ref # 27)	461K0600	2
CLAMP,EXHAUST PIPE (Ref # 28)	92037-1056	2
DAMPER RUBBER (Ref # 29)	92075-1042	4