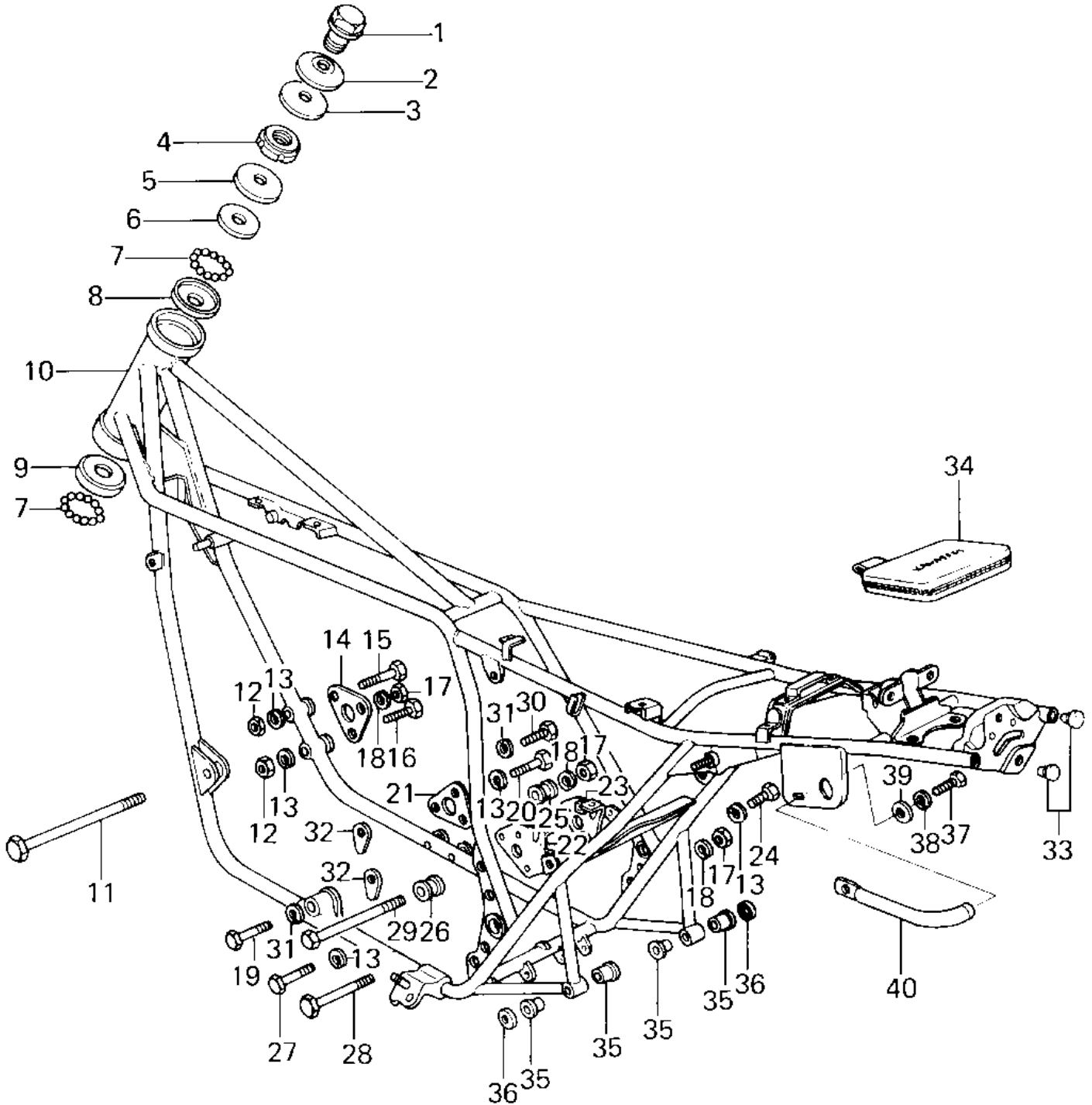


1980 Z1R PARTS DIAGRAM

FRAME/FRAME FITTINGS (80 D3)



1980 Z1R PARTS LIST

FRAME/FRAME FITTINGS ('80 D3)

ITEM NAME	PART NUMBER	QUANTITY
BOLT,STEERG STEM HEA (Ref # 1)	92007-031	1
WASHER,STEERG STM HD (Ref # 2)	92022-230	1
WASHER,WAVE (Ref # 3)	46100-003	1
NUT STEERING STEM LC (Ref # 4)	92090-007	1
CAP, STEERING STEM (Ref # 5)	46098-016	1
CONE,STRNG STM BRNG (Ref # 6)	92047-011	1
BALL STEEL 1/4' (Ref # 7)	600A0800	39
RACE STRNG STEM BERN (Ref # 8)	92048-006	1
RACE,STRNG STM BRNG (Ref # 9)	92048-008	1
FRAME (Ref # 10)	32002-1103	1
BOLT,ENGINE MOUNTING (Ref # 11)	92091-022	1
NUT,8MM (Ref # 12)	311B0800	2
WASHER SPRING 8MM (Ref # 13)	461F0800	8
PLATE,ENG MOUNT FRON (Ref # 14)	32030-025	1
BOLT,HEX HEAD,8X65 (Ref # 15)	92001-1236	1
BOLT-FLANGE (Ref # 15)	92001-1582	1
BOLT,FLANGED,8X60 (Ref # 16)	92001-1581	1
BOLT,FLANGED,8X60 (Ref # 16)	92001-1581	1
NUT,LOCK,10MM (Ref # 17)	92019-021	3
WASHER SPRING 10MM (Ref # 18)	461F1000	3
BOLT,HEX HEAD,12X55 (Ref # 19)	92001-1262	1
BOLT-SMALL-UPSET,8X1 (Ref # 20)	115G0818	2
PLATE,ENG MOUNT LOWE (Ref # 21)	32030-026	1
BRACKET,REAR ENGINE (Ref # 22)	32029-1023	1
BRACKET,REAR ENGINE (Ref # 23)	32029-1024	1
BOLT,HEX HEAD,8X40 (Ref # 24)	92001-1230	3
BOLT (Ref # 24)	92001-1578	3
COLLAR,ENG MOUNTING (Ref # 25)	92027-160	1
COLLAR,ENG MOUNTING (Ref # 26)	92027-159	1

1980 Z1R PARTS LIST

FRAME/FRAME FITTINGS ('80 D3)

ITEM NAME	PART NUMBER	QUANTITY
BOLT,FLANGED,8X35 (Ref # 27)	92001-1577	1
BOLT,FLANGED,8X35 (Ref # 27)	92001-1577	1
BOLT,ENGINE MOUNTING (Ref # 28)	92003-099	1
BOLT,ENGINE MOUNTING (Ref # 29)	92091-023	1
BOLT,HEX HEAD,12X70 (Ref # 30)	92001-1265	1
WASHER SPRING 12MM (Ref # 31)	461F1200	2
NUT,12MM (Ref # 32)	92016-045	2
PLUG,FRAME (Ref # 33)	92066-1018	2
BAG (Ref # 34)	56008-1008	1
BUSHING,MUFFLER FITT (Ref # 35)	92092-010	4
WASHER,PLAIN (Ref # 36)	92022-328	2
BOLT-SMALL-UPSET,8X1 (Ref # 37)	115G0816	1
WASHER SPRING 8MM (Ref # 38)	461F0800	1
WASHER PLAIN 8MM (Ref # 39)	410B0800	1
GRIP,FRAME (Ref # 40)	32109-1004	1