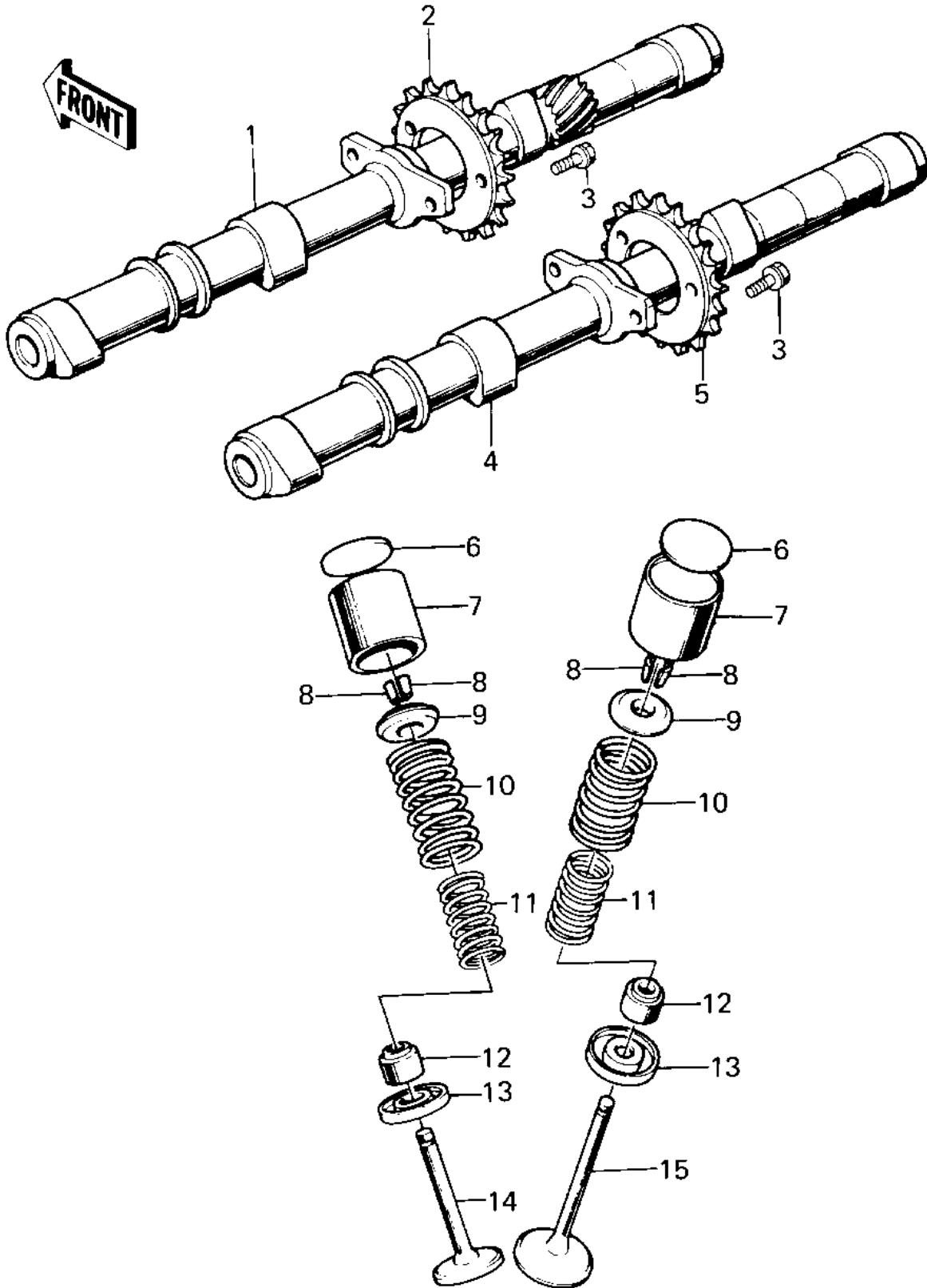


1980 Shaft PARTS DIAGRAM

CAMSHAFTS/VALVES



1980 Shaft PARTS LIST

CAMSHAFTS/VALVES

ITEM NAME	PART NUMBER	QUANTITY
CAMSHAFT,EXHAUST (Ref # 1)	12044-015	4
SPROCKET,EXH CAM SHFT (Ref # 2)	12046-1018	4
BOLT,SPROCKET FITTING (Ref # 3)	92003-208	4
CAMSHAFT,INLET (Ref # 4)	12044-014	4
SPROCKET,INLET CAM SF (Ref # 5)	12046-1017	4
SHIM,TAPPET,2.00T (Ref # 6)	12037-001	4
SHIM,TAPPET,2.05T (Ref # 6)	12037-002	4
SHIM,TAPPET,2.10T (Ref # 6)	12037-003	4
SHIM,TAPPET,2.15T (Ref # 6)	12037-004	4
SHIM,TAPPET,2.20T (Ref # 6)	12037-005	4
SHIM,TAPPET,2.25T (Ref # 6)	12037-006	4
SHIM,TAPPET,2.30T (Ref # 6)	12037-007	4
SHIM,TAPPET,2.35T (Ref # 6)	12037-008	4
SHIM,TAPPET,2.40T (Ref # 6)	12037-009	4
SHIM,TAPPET,2.45T (Ref # 6)	12037-010	4
SHIM,TAPPET,2.50T (Ref # 6)	12037-011	4
SHIM,TAPPET,2.55T (Ref # 6)	12037-012	4
SHIM,TAPPET,2.60T (Ref # 6)	12037-013	4
SHIM,TAPPET,2.65T (Ref # 6)	12037-014	4
SHIM,TAPPET,2.70T (Ref # 6)	12037-015	4
SHIM,TAPPET,2.75T (Ref # 6)	12037-016	4
SHIM,TAPPET,2.80T (Ref # 6)	12037-017	4
SHIM,TAPPET,2.85T (Ref # 6)	12037-018	4
SHIM,TAPPET,2.90T (Ref # 6)	12037-019	4
SHIM,TAPPET,2.95T (Ref # 6)	12037-020	4
SHIM,TAPPET,3.00T (Ref # 6)	12037-021	4
SHIM,TAPPET,3.05T (Ref # 6)	12037-022	4
SHIM,TAPPET,3.10T (Ref # 6)	12037-023	4
SHIM,TAPPET,3.15T (Ref # 6)	12037-024	4

1980 Shaft PARTS LIST

CAMSHAFTS/VALVES

ITEM NAME	PART NUMBER	QUANTITY
SHIM,TAPPET 3.20T (Ref # 6)	12037-025	4
TAPPET (Ref # 7)	12032-005	4
SPLIT KEEPER (Ref # 8)	12011-004	4
RETAINER,VALVE SPRING (Ref # 9)	12009-005	4
SPRING,OUTER VALVE (Ref # 10)	12007-012	4
SPRING,INNER VALVE (Ref # 11)	12007-011	4
OIL SEAL,RV37129.5 (Ref # 12)	92049-016	4
SEAT-SPRING,VALVE (Ref # 13)	16007-1024	4
VALVE,EXHAUST (Ref # 14)	12005-1009	4
VALVE,INTAKE (Ref # 15)	12004-1010	4