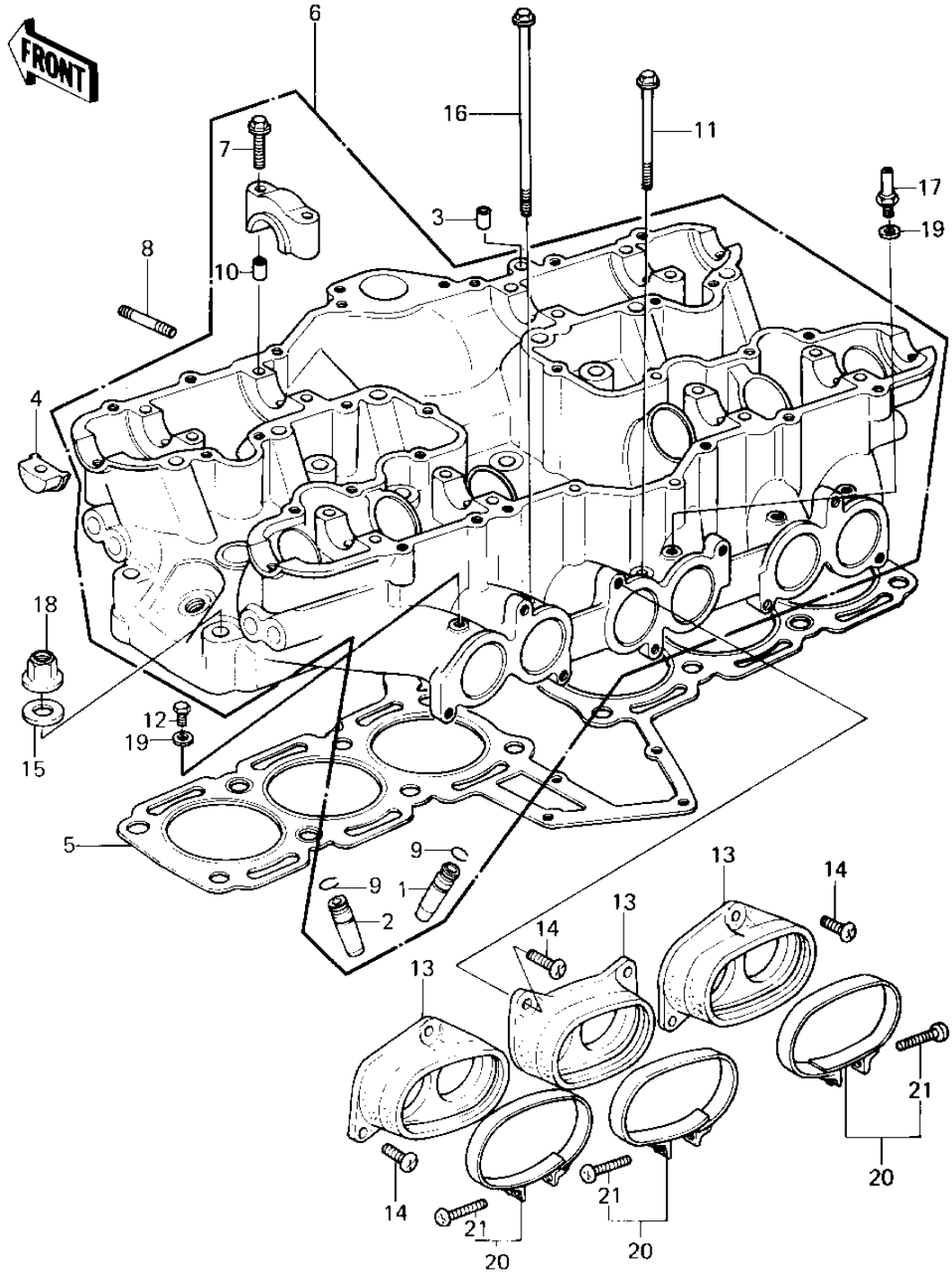


1979 KZ1300-A1 PARTS DIAGRAM

CYLINDER HEAD



1979 KZ1300-A1 PARTS LIST

CYLINDER HEAD

| ITEM NAME | PART NUMBER | QUANTITY |
|----------------------------------|-------------|----------|
| GUIDE,INLET VALVE (Ref # 1) | 12013-009 | 6 |
| GUIDE,EXHAUST VALVE (Ref # 2) | 49002-1002 | 6 |
| PIN-DOWEL (Ref # 3) | 92042-007 | 1 |
| PLUG,CAMSHAFT (Ref # 4) | 92066-1030 | 4 |
| GASKET,HEAD,CYLINDER (Ref # 5) | 11004-1014 | 1 |
| HEAD,CYLINDER (Ref # 6) | 11008-1002 | 1 |
| HEAD-COMP-CYLINDER (Ref # 6) | 11008-1022 | 1 |
| BOLT,HEX HEAD,6X45 (Ref # 7) | 92003-092 | 16 |
| STUD,6X27 (Ref # 8) | 92004-066 | 12 |
| CIRCLIP-VALVE (Ref # 9) | 92036-023 | 12 |
| PIN-DOWEL (Ref # 10) | 92042-007 | 16 |
| BOLT,FLANGED,6X65 (Ref # 11) | 130G0665 | 3 |
| BOLT,FLANGED,6X18 (Ref # 12) | 130N0608 | 4 |
| HOLDER,CARBURETOR (Ref # 13) | 16065-1016 | 3 |
| SCREW PAN HEAD 6X16 (Ref # 14) | 220B0616 | 9 |
| WASHER PLAIN 10MM (Ref # 15) | 411B1000 | 16 |
| BOLT,HEX HEAD,6X161 (Ref # 16) | 92001-1302 | 1 |
| BOLT,VACUUM (Ref # 17) | 92001-1143 | 2 |
| NUT,CYLINDER HEAD (Ref # 18) | 92015-076 | 16 |
| WASHER,PLAIN (Ref # 19) | 92022-304 | 6 |
| CLAMP,CARBURETOR HLDR (Ref # 20) | 92037-1119 | 3 |
| SCREW,PAN HEAD,5X30 (Ref # 21) | 92011-032 | 3 |