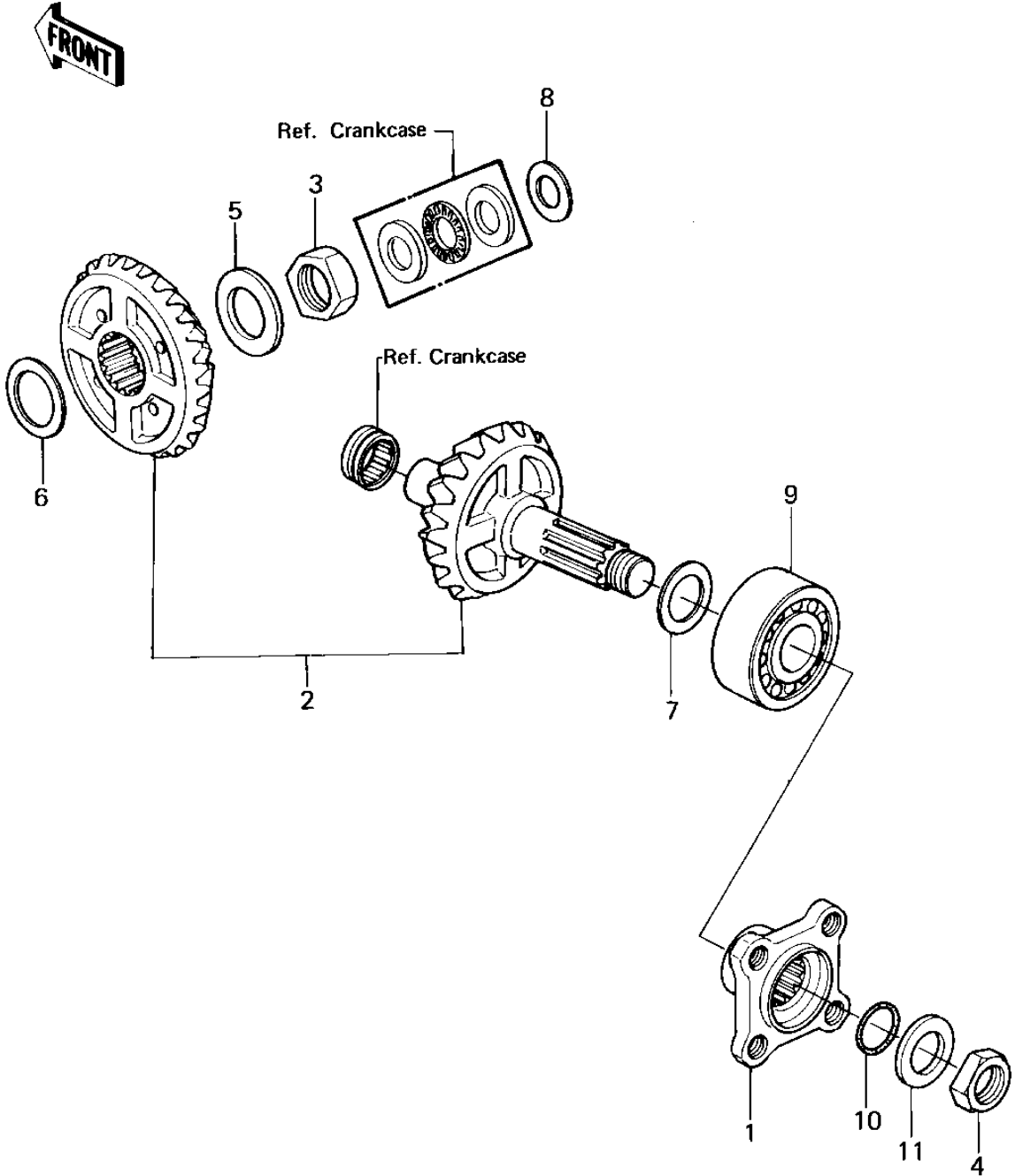


1981 KZ1300-A3 PARTS DIAGRAM

FRONT BEVEL GEARS



1981 KZ1300-A3 PARTS LIST

FRONT BEVEL GEARS

ITEM NAME	PART NUMBER	QUANTITY
COUPLING,OUTPUT SHAFT (Ref # 1)	42034-1010	1
GEAR SET,FRONT BEVEL (Ref # 2)	13101-5025	1
NUT,24M/M (Ref # 3)	92015-1057	1
NUT 20MM (Ref # 4)	92016-028	1
WASHER,24M/M,CANICAL (Ref # 5)	92022-1104	1
SHIM,30.3X40X0.6 (Ref # 6)	92025-1006	AR
SHIM,30.3X40X0.9 (Ref # 6)	92025-1007	AR
SHIM,30.3X40X1.2 (Ref # 6)	92025-1008	AR
SHIM,30.3X40X0.1 (Ref # 6)	92025-1009	AR
SHIM,30.3X40X0.15 (Ref # 6)	92025-1010	AR
SHIM,30.3X40X0.3 (Ref # 6)	92025-1012	AR
SHIM,25.3X36X0.6 (Ref # 6)	92025-1013	AR
SHIM,25.3X36X0.9 (Ref # 6)	92025-1014	AR
SHIM,25.3X36X1.2 (Ref # 6)	92025-1696	AR
SHIM,25.3X36X0.1 (Ref # 6)	92025-1016	AR
SHIM,25.3X36X0.15 (Ref # 6)	92025-1017	AR
SHIM,25.3X36X0.2 (Ref # 6)	92025-1018	AR
SHIM,25.3X36X0.3 (Ref # 6)	92025-1019	AR
SHIM,15.3X27.5X0.6 (Ref # 8)	92025-1020	AR
SHIM,15.3X27.5X0.9 (Ref # 8)	92025-1021	AR
SHIM,15.3X27.5X1.2 (Ref # 8)	92025-1022	AR
SHIM,15.3X27.5X0.15 (Ref # 8)	92025-1024	AR
SHIM,15.3X27.5X0.2 (Ref # 8)	92025-1025	AR
SHIM,15.3X27.5X0.3 (Ref # 8)	92025-1026	AR
BEARING,BALL,5305 (Ref # 9)	92045-1019	1
BEARING-BALL,5305SH2C (Ref # 9)	92045-1147	1
"O" RING,20.5MM (Ref # 10)	92055-1029	1
WASHER (Ref # 11)	92125-002	1