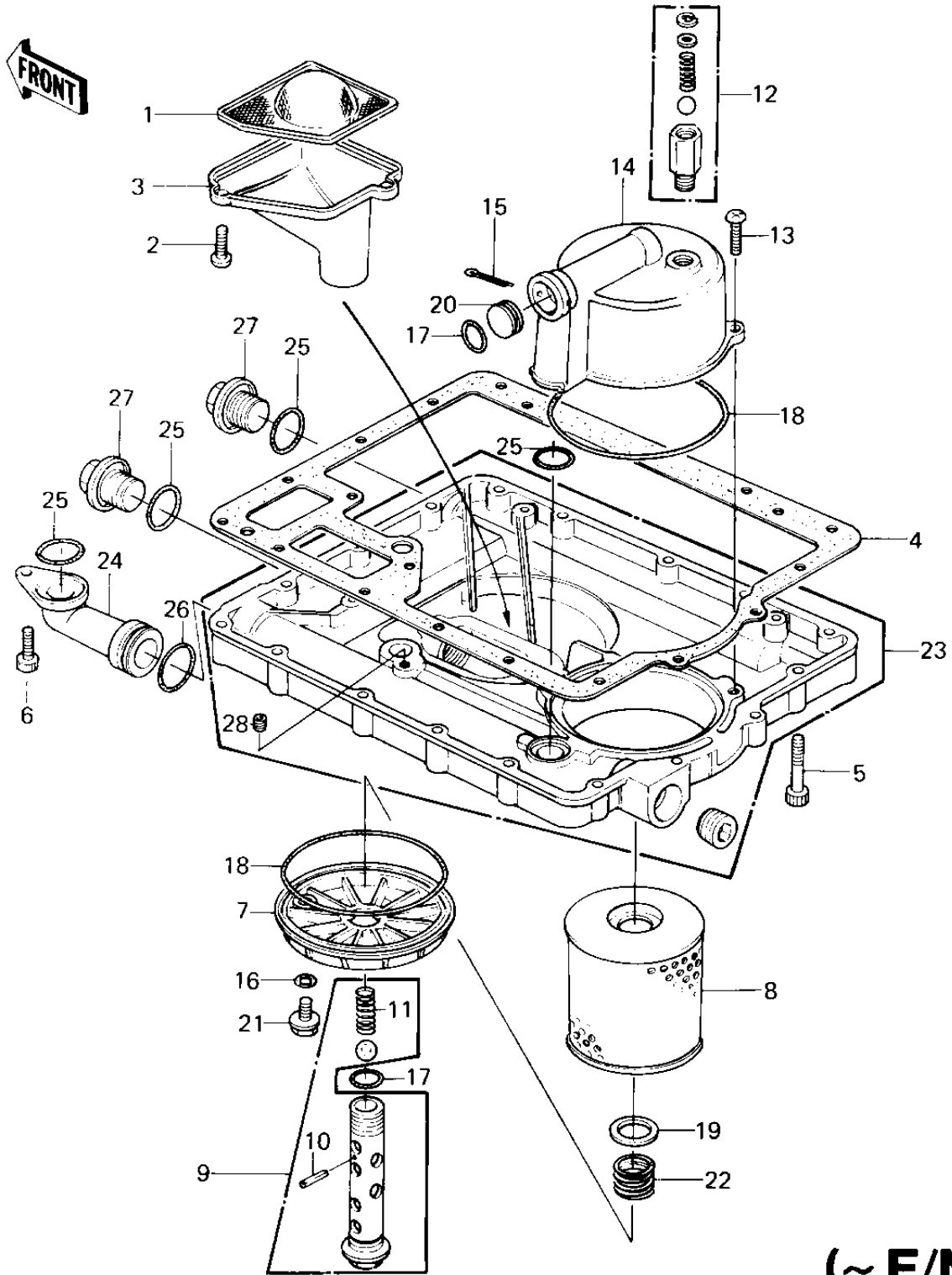


1980 KZ1300-A2 PARTS DIAGRAM

OIL PAN/OIL FILTER (~E/NO. 010637)



(~ E/N

1980 KZ1300-A2 PARTS LIST

OIL PAN/OIL FILTER (~E/NO. 010637)

ITEM NAME	PART NUMBER	QUANTITY
FILTER,OIL (Ref # 1)	14043-1007	3
SCREW PAN HEAD 6X20 (Ref # 2)	220B0620	3
CASE,OIL FILTER (Ref # 3)	32099-1006	3
GASKET,OIL PAN (Ref # 4)	11009-1093	3
BOLT,SOCKET,6X35 (Ref # 5)	120P0635	3
BOLT,6X20 (Ref # 6)	120P0620	3
COVER,OIL FILTER (Ref # 7)	14025-1170	3
COVER,OIL FILTER (Ref # 7)	14025-1170	3
ELEMENT,OIL FILTER (Ref # 8)	16099-002	3
BOLT ASSY,OIL FILTER (Ref # 9)	16126-1006	3
SPRING PIN (Ref # 10)	92043-111	3
SPRING,PISTON (Ref # 11)	92081-133	3
RELIEF VALVE ASSY (Ref # 12)	16130-1001	3
SCREW PAN HEAD 6X20 (Ref # 13)	220B0620	3
CASE,OIL FILTER (Ref # 14)	32099-1008	3
PIN,COTTER,2.0X40 (Ref # 15)	550D2040	3
"O" RING,8MM (Ref # 16)	670B1508	3
"O" RING,16MM (Ref # 17)	670B2016	3
"O" RING,95MM (Ref # 18)	671B2595	3
WASHER,20.5X30X1.0 (Ref # 19)	92022-1012	3
PLUG,DRAIN,8X10 (Ref # 21)	92066-1026	3
SPRING,OIL FILTER (Ref # 22)	92081-1018	3
PAN-OIL (Ref # 23)	49034-5008	3
PAN-OIL (Ref # 23)	49034-5008	3
ELBOW,OIL PASSAGE (Ref # 24)	52014-1002	3
"O" RING,22MM (Ref # 25)	670B2022	3
"O" RING,25MM (Ref # 26)	671B2525	3
PLUG,OIL DRAIN (Ref # 27)	92001-1183	3
NOZZLE (Ref # 28)	92062-015	3