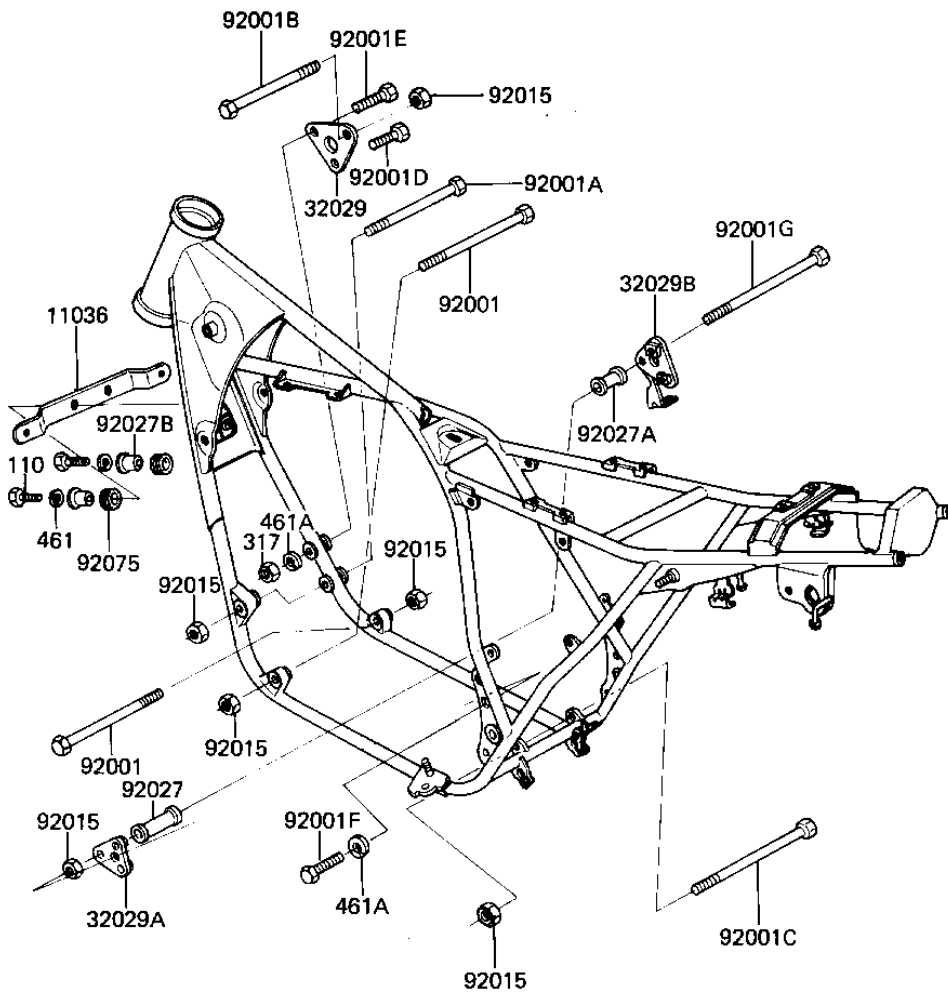


1981 GPz PARTS DIAGRAM

FRAME FITTINGS

F2131-0043



1981 GPz PARTS LIST

FRAME FITTINGS

| ITEM NAME | PART NUMBER | QUANTITY |
|-------------------------------------|-------------|----------|
| BRACKET,OIL COOLER (Ref # 11036) | 11036-1168 | 1 |
| BRACKET,ENGINE (Ref # 32029) | 32029-1048 | 1 |
| BRACKET,ENGINE (Ref # 32029A) | 32029-1049 | 1 |
| BRACKET-ENGINE,RR,RH (Ref # 32029B) | 32029-1157 | 1 |
| BOLT,HEX HEAD,10X84 (Ref # 92001) | 92001-1048 | 2 |
| BOLT,HEX HEAD,10X72 (Ref # 92001A) | 92001-1049 | 1 |
| BOLT,FLANGED,10X60 (Ref # 92001B) | 92001-1599 | 1 |
| BOLT,FLANGED,10X60 (Ref # 92001C) | 92001-1599 | 1 |
| BOLT,FLANGED,8X60 (Ref # 92001D) | 92001-1581 | 1 |
| BOLT-FLANGE (Ref # 92001E) | 92001-1582 | 1 |
| BOLT (Ref # 92001F) | 92001-1578 | 4 |
| BOLT,FLANGED,10X255 (Ref # 92001G) | 92001-1609 | 1 |
| NUT,10MM (Ref # 92015) | 92019-021 | 6 |
| COLLAR,L=57.5M/M (Ref # 92027) | 92027-1109 | 1 |
| COLLAR,L=37M/M (Ref # 92027A) | 92027-1110 | 1 |
| COLLAR (Ref # 92027B) | 92027-194 | 2 |
| DAMPER RUBBER (Ref # 92075) | 92075-277 | 2 |
| BOLT-UPSET (Ref # 110) | 112G0625 | 2 |
| NUT,8M/M (Ref # 317) | 317B0800 | 2 |
| WASHER SPRING 6MM (Ref # 461) | 461F0600 | 2 |
| WASHER SPRING 8MM (Ref # 461A) | 461F0800 | 6 |