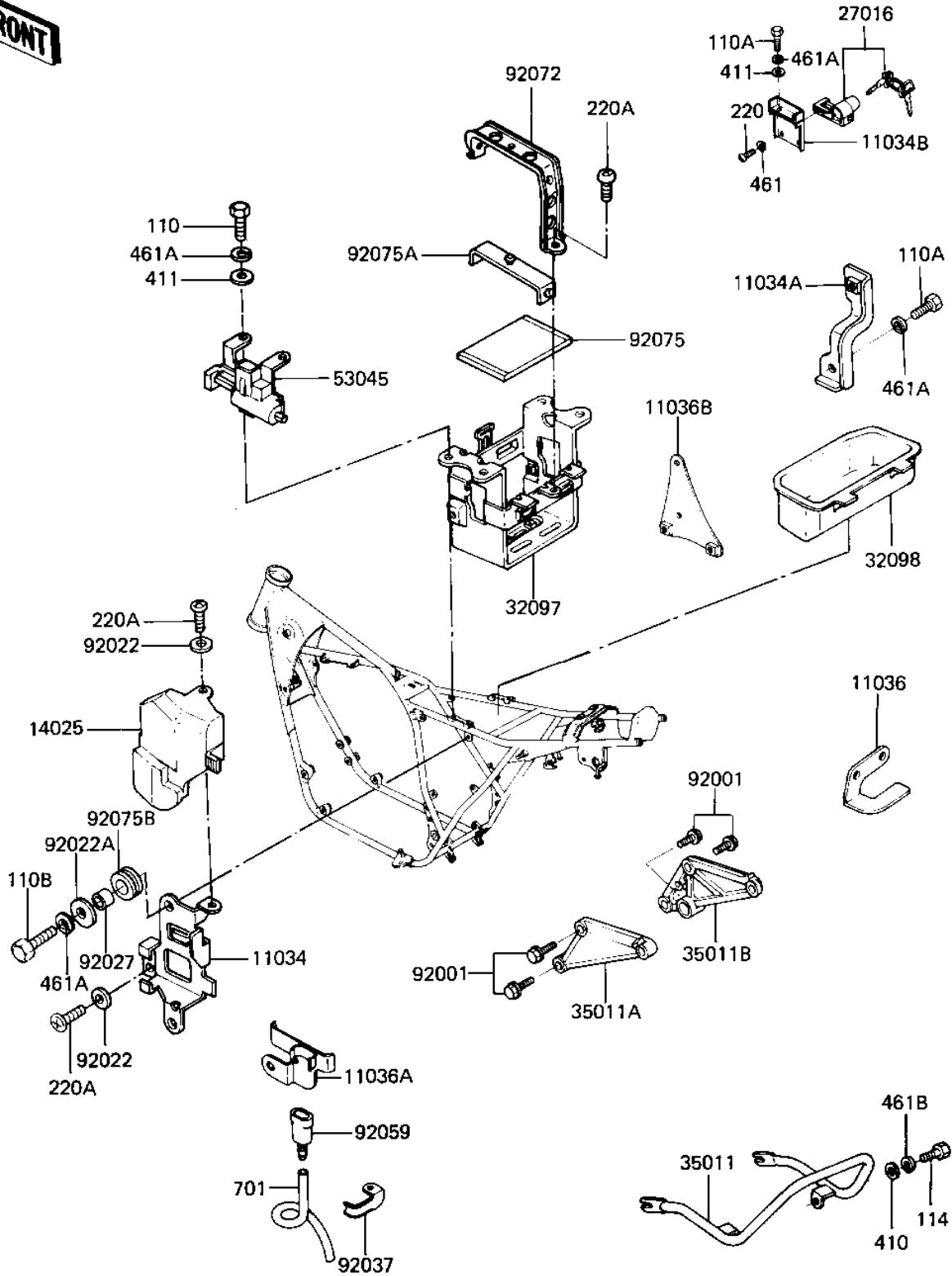


1981 GPz PARTS DIAGRAM

BATTERY CASE/TOOL CASE

F2132-0030



1981 GPz PARTS LIST

BATTERY CASE/TOOL CASE

ITEM NAME	PART NUMBER	QUANTITY
BRACKET,ELECTRO BASE (Ref # 11034)	11034-1239	1
BRACKET,RESERVOIR TNK (Ref # 11034A)	11034-1872	1
BRACKET,HELMET LOCK (Ref # 11034B)	11034-1926	1
BRACKET,FUSE (Ref # 11036)	11036-1026	1
BRACKET,BATTERY (Ref # 11036A)	11036-1470	1
BRACKET,RESERVOIR LIG (Ref # 11036B)	11036-1137	1
COVER,ELECTRO (Ref # 14025)	14025-1049	1
LOCK ASSY,HELMET (Ref # 27016)	27016-5038	1
CASE-BATTERY (Ref # 32097)	32097-1029	1
CASE,TOOL (Ref # 32098)	32098-1005	1
STAY,RR (Ref # 35011)	35011-1083	1
STAY,MUFFLER,LH (Ref # 35011A)	35011-1084	1
STAY,MUFFLER,RH (Ref # 35011B)	35011-1085	1
HOOK ASSY,HELMET (Ref # 53045)	53045-1001	1
BOLT,8X28 (Ref # 92001)	92001-1095	4
WASHER PLAIN (Ref # 92022)	92022-024	2
WASHER 6.5X20X1.6T (Ref # 92022A)	92022-125	2
COLLAR (Ref # 92027)	92027-165	2
CLAMP,BREATHER TUBE (Ref # 92037)	92037-1246	1
CONNECTOR PIPE (Ref # 92059)	92059-101	1
BAND,BATTERY (Ref # 92072)	92072-1019	1
DAMPER,BATTERY BASE (Ref # 92075)	92075-1076	1
DAMPER,BATTERY BAND (Ref # 92075A)	92075-1113	1
DAMPER RUBBER (Ref # 92075B)	92075-149	2
BOLT-UPSET,6X12 (Ref # 110)	112G0612	4
BOLT-UPSET 6X14 (Ref # 110A)	112B0614	3
BOLT-UPSET,6X20 (Ref # 110B)	112G0620	2
BOLT-SMALL-UPSET,8X16 (Ref # 114)	115G0816	2
SCREW PAN HEAD 5X10 (Ref # 220)	220B0510	2

1981 GPz PARTS LIST

BATTERY CASE/TOOL CASE

ITEM NAME	PART NUMBER	QUANTITY
SCREW PAN HEAD 6X12 (Ref # 220A)	220B0612	3
WASHER PLAIN 8MM (Ref # 410)	410B0800	2
WASHER PLAIN 6MM (Ref # 411)	411B0600	6
WASHER SPRING 5MM (Ref # 461)	461F0500	2
WASHER SPRING 6MM (Ref # 461A)	461F0600	9
WASHER SPRING 8MM (Ref # 461B)	461F0800	2
TUBE-PVC,6X530 (Ref # 701)	701Q06530	1