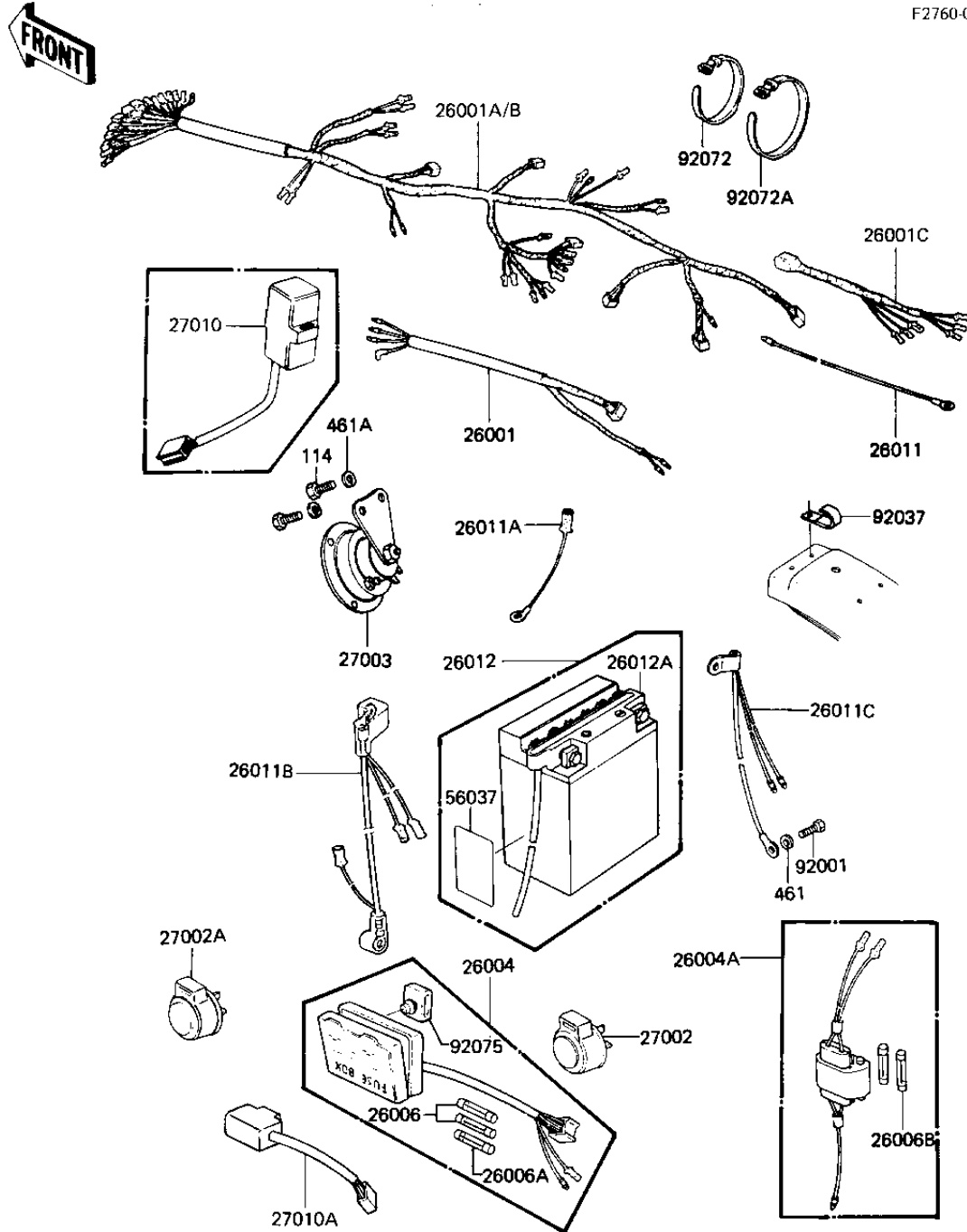


# 1981 CSR PARTS DIAGRAM

CHASSIS ELECTRICAL EQUIPMENT ('81-'82 H1)

F2760-0085



# 1981 CSR PARTS LIST

## CHASSIS ELECTRICAL EQUIPMENT ('81-'82 H1)

ITEM NAME	PART NUMBER	QUANTITY
WIRING HARNESS,CENTER (Ref # 26001)	26001-1117	1
HARNESS,MAIN (Ref # 26001A)	26001-1198	1
WIRING HARNESS,REAR (Ref # 26001C)	26002-063	1
FUSE ASSY (Ref # 26004)	26004-1006	1
FUSE-ASSY,ACCESSORY (Ref # 26004A)	26004-1014	1
FUSE 10A (Ref # 26006)	26006-003	3
FUSE-20A (Ref # 26006A)	26006-005	2
FUSE,10A,L=30M/M (Ref # 26006B)	26006-1002	3
LEAD WIRE,SIGNAL LAMP (Ref # 26011)	26011-063	2
WIRE-LEAD,ACCESSORY G (Ref # 26011A)	26011-1100	1
WIRE-LEAD,BATTERY (Ref # 26011B)	26011-1101	1
WIRE-LEAD,BATTERY GRO (Ref # 26011C)	26011-1102	1
FB BAT FB12A-A (Ref # 26012)	26012-1004	1
26012-1210 (Canada) (Ref # 26012A)	26012-1005	1
RELAY-TURN SIGNAL (Ref # 27002)	27002-011	1
RELAY,TURN SIGNAL (Ref # 27002A)	27002-016	1
HORN (Ref # 27003)	27003-076	1
LABEL-WARNING,BATTERY (Ref # 56037)	56040-1036	1
BOLT,HEX HEAD,6MM (Ref # 92001)	92001-137	1
CLAMP,WIRING HARNESS (Ref # 92037)	92037-1069	2
BAND,MIDDLE (Ref # 92072)	92072-031	5
BAND,WIRING HARNESS (Ref # 92072A)	92072-056	4
DAMPER RUBBER,FUSE (Ref # 92075)	92075-279	1
BOLT-SMALL-UPSET,8X16 (Ref # 114)	115G0816	2
WASHER SPRING 6MM (Ref # 461)	461F0600	1
WASHER SPRING 8MM (Ref # 461A)	461F0800	2