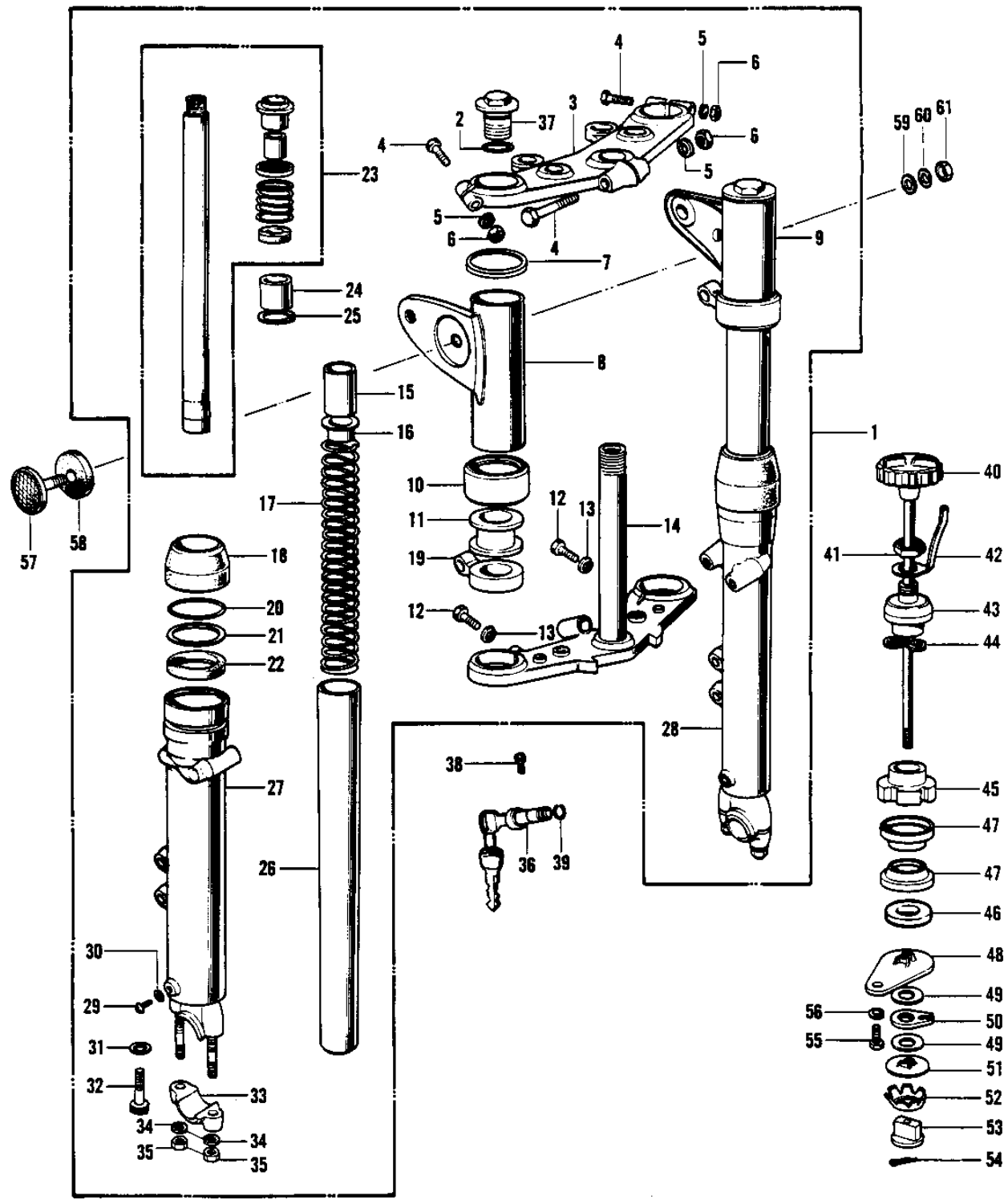


1969 Mach III PARTS DIAGRAM

FRONT FORK (H1-B)



1969 Mach III PARTS LIST

FRONT FORK (H1-B)

ITEM NAME	PART NUMBER	QUANTITY
FORK-FRONT (Ref # 1)	44001-087	1
'O' RING FORK TOP (Ref # 2)	44046-015	2
HEAD-STEERING STEM (Ref # 3)	44039-040	1
BOLT-HEX HEAD,8X55 (Ref # 4)	44041-038	3
WASHER SPRING 8MM (Ref # 5)	461F0800	3
NUT,8M/M (Ref # 6)	311N0800	3
WASHER-FORK COVER (Ref # 7)	44032-008	2
COVER,L.H,FORK,F.BLCK (Ref # 8)	44033-043-21	1
COVER,R.H FORK,F.BLK (Ref # 9)	44034-042-21	1
GUIDE-FORK COVER (Ref # 10)	44064-002	2
GASKET-FORK COVER (Ref # 11)	44045-035	2
BOLT-HEX HEAD,12X36 (Ref # 12)	113B1236A	2
WASHER SPRING 12MM (Ref # 13)	461F1200	2
STEM-STEERING (Ref # 14)	44037-041	1
SPACER-FORK SPRING (Ref # 15)	44028-023	2
GUIDE-FORK SPRING (Ref # 16)	44029-019	2
SPRING-FORK (Ref # 17)	44026-031	2
DUST SHIELD-FORK (Ref # 18)	44010-021	2
DUST SHIELD-FORK (Ref # 18)	44010-021	2
BRACKET-TURN SIG LAMP (Ref # 19)	23051-031	2
CIRCLIP-OIL SEAL FIT (Ref # 20)	44044-012	2
WASHER-OIL SEAL FIT (Ref # 21)	44043-044	2
SEAL-OIL,FORK OUTER P (Ref # 22)	92049-1216	2
CYLINDER-FORK (Ref # 23)	44022-007	2
CYLINDER-FORK (Ref # 23)	44023-006	2
PISTON FORK (Ref # 24)	44018-003	2
PISTON,FORK (Ref # 24)	44018-009	2
CIRCLIP FORK PISTON (Ref # 25)	44044-008	2
CIRCLIP,FORK PISTON (Ref # 25)	44044-019	2

1969 Mach III PARTS LIST

FRONT FORK (H1-B)

ITEM NAME	PART NUMBER	QUANTITY
TUBE-FORK INNER (Ref # 26)	44013-032	2
TUBE,LH,FORK OUTER (Ref # 27)	44005-041	1
TUBE,RH,FORK OUTER (Ref # 28)	44006-039	1
SCREW PAN HEAD 4X8 (Ref # 29)	220B0408	2
GASKET FORK DRAIN PLG (Ref # 30)	44045-002	2
GASKET,FORK CYLINDER (Ref # 31)	44045-057	2
BOLT-FORK CYLINDER (Ref # 32)	44041-040	2
HOLDER-FRONT AXLE (Ref # 33)	44063-003	2
WASHER SPRING 8MM (Ref # 34)	461F0800	4
NUT,8MM (Ref # 35)	311B0800	4
LOCK ASSY-STEERING (Ref # 36)	27016-024	1
BOLT-FORK TOP (Ref # 37)	44062-003	2
SCREW RIVET (Ref # 38)	92099-001	1
CIRCLIP-STEERING LOCK (Ref # 39)	92033-024	1
KNOB-STEERING DAMPER (Ref # 40)	46101-006	1
NUT 12MM (Ref # 41)	315N1200A	1
SPRING STRG DAMP KNOB (Ref # 42)	46126-001	1
BOLT-STEERING STEM (Ref # 43)	92090-020	1
WASHER-WAVE (Ref # 44)	46100-002	1
NUT STEERING STEM LCK (Ref # 45)	92090-007	1
CAP, STEERING STEM (Ref # 46)	46098-016	1
CONE STRNG STEM BERNG (Ref # 47)	92047-006	2
PLATE STRG DAMP STEEL (Ref # 48)	46106-005	1
PLATE STRG DAMP FRCTN (Ref # 49)	46104-005	1
PLATE STRG DAMP ANCHR (Ref # 50)	46105-005	1
PLATE STRG DAMP STEEL (Ref # 51)	46106-006	1
SPRING-STEERING DAMP (Ref # 52)	46124-006	1
NUT STRG DAMPER GUIDE (Ref # 53)	46125-005	1
PIN COTTER 1.6X15 (Ref # 54)	550D1615	1

1969 Mach III PARTS LIST

FRONT FORK (H1-B)

ITEM NAME	PART NUMBER	QUANTITY
BOLT SMALL (Ref # 55)	114G0812	1
WASHER SPRING 8MM (Ref # 56)	461F0800	1
REFLECTOR-REFLEX,FRNT (Ref # 57)	28012-006	2
DAMPER RUBBER-REFLCTR (Ref # 58)	92094-009	2
WASHER PLAIN 5MM (Ref # 59)	411B0500	2
WASHER SPRING 5MM (Ref # 60)	461F0500	2
NUT,5MM (Ref # 61)	311B0500	2