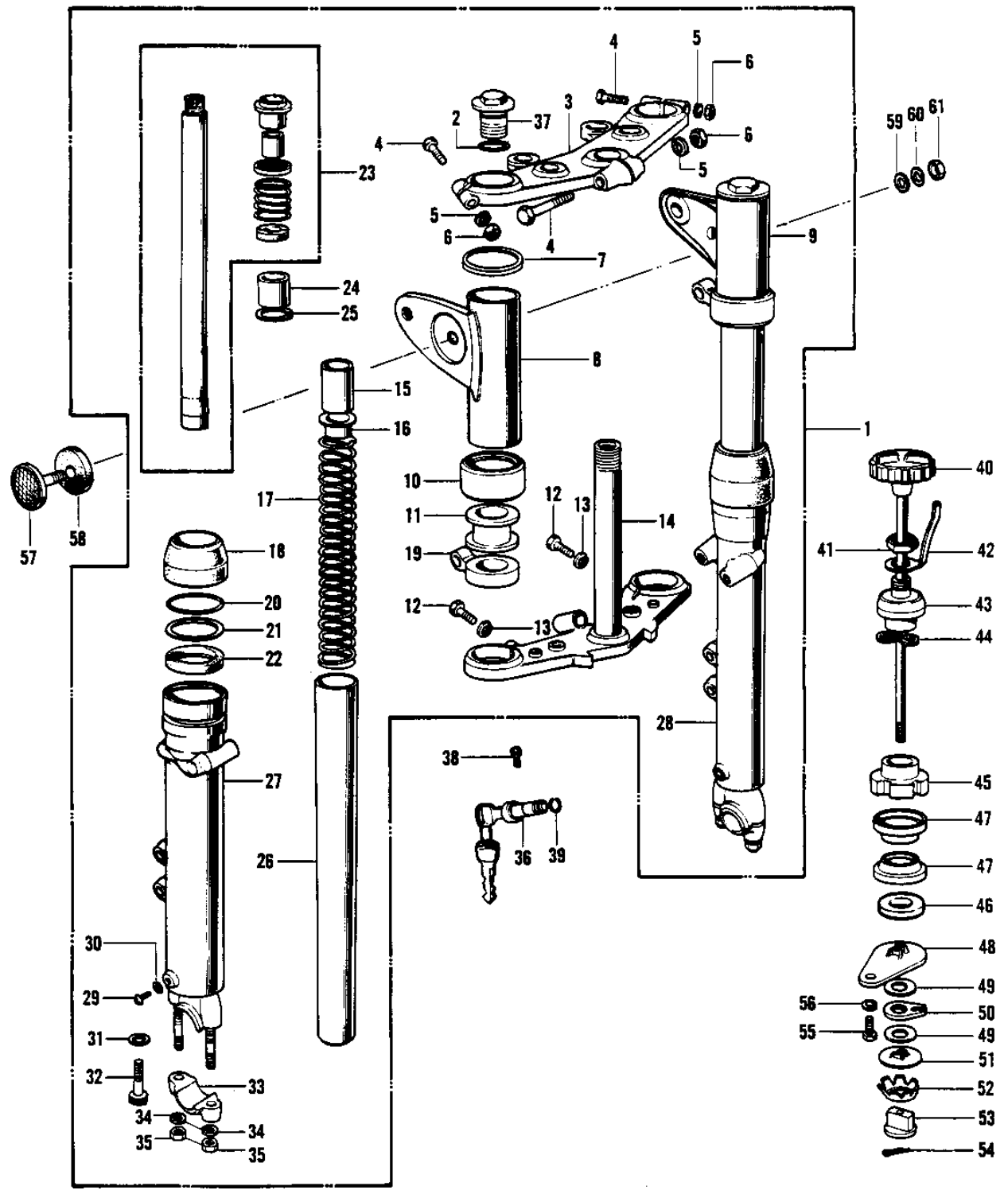


1969 Mach III PARTS DIAGRAM

FRONT FORK (H1-B)



1969 Mach III PARTS LIST

FRONT FORK (H1-B)

| ITEM NAME | PART NUMBER | QUANTITY |
|----------------------------------|--------------|----------|
| FORK-FRONT (Ref # 1) | 44001-087 | 1 |
| 'O' RING FORK TOP (Ref # 2) | 44046-015 | 2 |
| HEAD-STEERING STEM (Ref # 3) | 44039-040 | 1 |
| BOLT-HEX HEAD,8X55 (Ref # 4) | 44041-038 | 3 |
| WASHER SPRING 8MM (Ref # 5) | 461F0800 | 3 |
| NUT,8M/M (Ref # 6) | 311N0800 | 3 |
| WASHER-FORK COVER (Ref # 7) | 44032-008 | 2 |
| COVER,L.H,FORK,F.BLCK (Ref # 8) | 44033-043-21 | 1 |
| COVER,R.H FORK,F.BLK (Ref # 9) | 44034-042-21 | 1 |
| GUIDE-FORK COVER (Ref # 10) | 44064-002 | 2 |
| GASKET-FORK COVER (Ref # 11) | 44045-035 | 2 |
| BOLT-HEX HEAD,12X36 (Ref # 12) | 113B1236A | 2 |
| WASHER SPRING 12MM (Ref # 13) | 461F1200 | 2 |
| STEM-STEERING (Ref # 14) | 44037-041 | 1 |
| SPACER-FORK SPRING (Ref # 15) | 44028-023 | 2 |
| GUIDE-FORK SPRING (Ref # 16) | 44029-019 | 2 |
| SPRING-FORK (Ref # 17) | 44026-031 | 2 |
| DUST SHIELD-FORK (Ref # 18) | 44010-021 | 2 |
| DUST SHIELD-FORK (Ref # 18) | 44010-021 | 2 |
| BRACKET-TURN SIG LAMP (Ref # 19) | 23051-031 | 2 |
| CIRCLIP-OIL SEAL FIT (Ref # 20) | 44044-012 | 2 |
| WASHER-OIL SEAL FIT (Ref # 21) | 44043-044 | 2 |
| SEAL-OIL,FORK OUTER P (Ref # 22) | 92049-1216 | 2 |
| CYLINDER-FORK (Ref # 23) | 44022-007 | 2 |
| CYLINDER-FORK (Ref # 23) | 44023-006 | 2 |
| PISTON FORK (Ref # 24) | 44018-003 | 2 |
| PISTON,FORK (Ref # 24) | 44018-009 | 2 |
| CIRCLIP FORK PISTON (Ref # 25) | 44044-008 | 2 |
| CIRCLIP,FORK PISTON (Ref # 25) | 44044-019 | 2 |

1969 Mach III PARTS LIST

FRONT FORK (H1-B)

| ITEM NAME | PART NUMBER | QUANTITY |
|----------------------------------|-------------|----------|
| TUBE-FORK INNER (Ref # 26) | 44013-032 | 2 |
| TUBE,LH,FORK OUTER (Ref # 27) | 44005-041 | 1 |
| TUBE,RH,FORK OUTER (Ref # 28) | 44006-039 | 1 |
| SCREW PAN HEAD 4X8 (Ref # 29) | 220B0408 | 2 |
| GASKET FORK DRAIN PLG (Ref # 30) | 44045-002 | 2 |
| GASKET,FORK CYLINDER (Ref # 31) | 44045-057 | 2 |
| BOLT-FORK CYLINDER (Ref # 32) | 44041-040 | 2 |
| HOLDER-FRONT AXLE (Ref # 33) | 44063-003 | 2 |
| WASHER SPRING 8MM (Ref # 34) | 461F0800 | 4 |
| NUT,8MM (Ref # 35) | 311B0800 | 4 |
| LOCK ASSY-STEERING (Ref # 36) | 27016-024 | 1 |
| BOLT-FORK TOP (Ref # 37) | 44062-003 | 2 |
| SCREW RIVET (Ref # 38) | 92099-001 | 1 |
| CIRCLIP-STEERING LOCK (Ref # 39) | 92033-024 | 1 |
| KNOB-STEERING DAMPER (Ref # 40) | 46101-006 | 1 |
| NUT 12MM (Ref # 41) | 315N1200A | 1 |
| SPRING STRG DAMP KNOB (Ref # 42) | 46126-001 | 1 |
| BOLT-STEERING STEM (Ref # 43) | 92090-020 | 1 |
| WASHER-WAVE (Ref # 44) | 46100-002 | 1 |
| NUT STEERING STEM LCK (Ref # 45) | 92090-007 | 1 |
| CAP, STEERING STEM (Ref # 46) | 46098-016 | 1 |
| CONE STRNG STEM BERNG (Ref # 47) | 92047-006 | 2 |
| PLATE STRG DAMP STEEL (Ref # 48) | 46106-005 | 1 |
| PLATE STRG DAMP FRCTN (Ref # 49) | 46104-005 | 1 |
| PLATE STRG DAMP ANCHR (Ref # 50) | 46105-005 | 1 |
| PLATE STRG DAMP STEEL (Ref # 51) | 46106-006 | 1 |
| SPRING-STEERING DAMP (Ref # 52) | 46124-006 | 1 |
| NUT STRG DAMPER GUIDE (Ref # 53) | 46125-005 | 1 |
| PIN COTTER 1.6X15 (Ref # 54) | 550D1615 | 1 |

1969 Mach III PARTS LIST

FRONT FORK (H1-B)

| ITEM NAME | PART NUMBER | QUANTITY |
|----------------------------------|-------------|----------|
| BOLT SMALL (Ref # 55) | 114G0812 | 1 |
| WASHER SPRING 8MM (Ref # 56) | 461F0800 | 1 |
| REFLECTOR-REFLEX,FRNT (Ref # 57) | 28012-006 | 2 |
| DAMPER RUBBER-REFLCTR (Ref # 58) | 92094-009 | 2 |
| WASHER PLAIN 5MM (Ref # 59) | 411B0500 | 2 |
| WASHER SPRING 5MM (Ref # 60) | 461F0500 | 2 |
| NUT,5MM (Ref # 61) | 311B0500 | 2 |