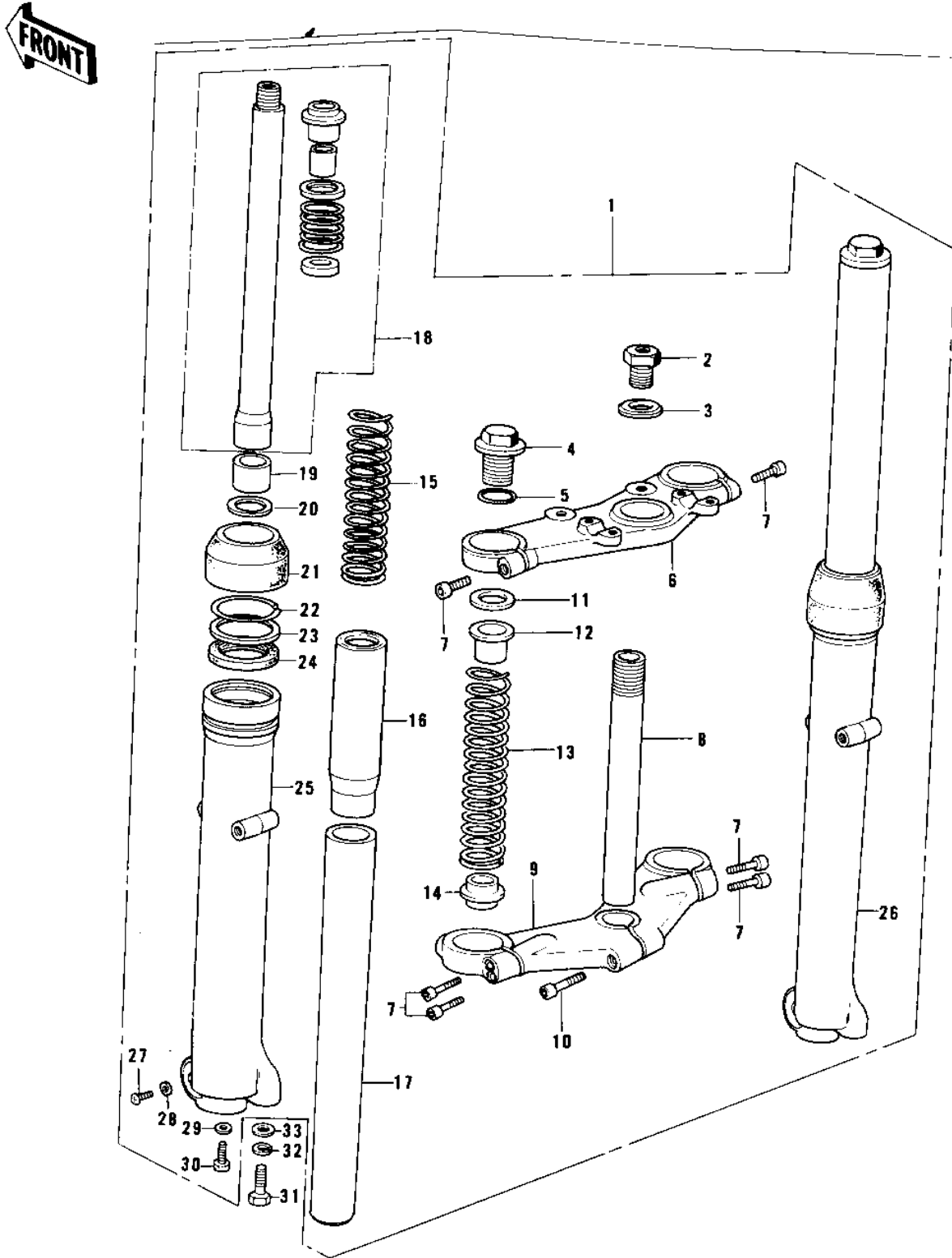


1975 KT250-A PARTS DIAGRAM

FRONT FORK



1975 KT250-A PARTS LIST

FRONT FORK

ITEM NAME	PART NUMBER	QUANTITY
FORK-FRONT (Ref # 1)	44001-157	1
BOLT,FORK TOP (Ref # 2)	44041-065	1
WASHER (Ref # 3)	44043-052	1
BOLT,FORK TOP (Ref # 4)	44041-080	2
'O' RING FORK TOP (Ref # 5)	44046-015	2
HEAD,STEERING STEM (Ref # 6)	44039-067	1
BOLT (Ref # 7)	44041-061	6
SHAFT,STEERING STEM (Ref # 8)	44052-010	1
STEM,STEERING (Ref # 9)	44038-009	1
BOLT-STEERING STEM (Ref # 10)	44041-043	1
SPACER,FORK SPRING (Ref # 12)	44028-035	2
SPRING,FORK INNER UPP (Ref # 13)	44026-065	2
GUIDE,FORK SPRING (Ref # 14)	44028-037	2
SPRING,FORK INNER LOW (Ref # 15)	44026-064	2
SPACER,FORK SPRING (Ref # 16)	44028-036	2
TUBE,FORK INNER (Ref # 17)	44013-050	2
CYLINDER-FORK (Ref # 18)	44022-025	2
PISTON,FORK (Ref # 19)	44018-009	2
CIRCLIP,FORK PISTON (Ref # 20)	44044-019	2
DUST SHIELD,FORK (Ref # 21)	44010-031	2
CIRCLIP OIL SEAL FIT (Ref # 22)	44044-005	2
WASHER OIL SEAL FIT (Ref # 23)	44043-023	2
OIL SEAL (Ref # 24)	44009-026	2
TUBE,LH,FORK OUTER (Ref # 25)	44005-059	1
TUBE,RH,FORK OUTER (Ref # 26)	44006-057	1
SCREW (Ref # 27)	44041-062	2
GASKET (Ref # 28)	44045-045	2
GASKET,FORK CYLINDER (Ref # 29)	44045-057	2
BOLT-FORK CYLINDER (Ref # 30)	44041-040	2

1975 KT250-A PARTS LIST

FRONT FORK

ITEM NAME	PART NUMBER	QUANTITY
BOLT,12X32 (Ref # 31)	113N1232A	1
WASHER SPRING 12MM (Ref # 32)	461F1200	1
WASHER PLAIN 12MM (Ref # 33)	410B1200	1