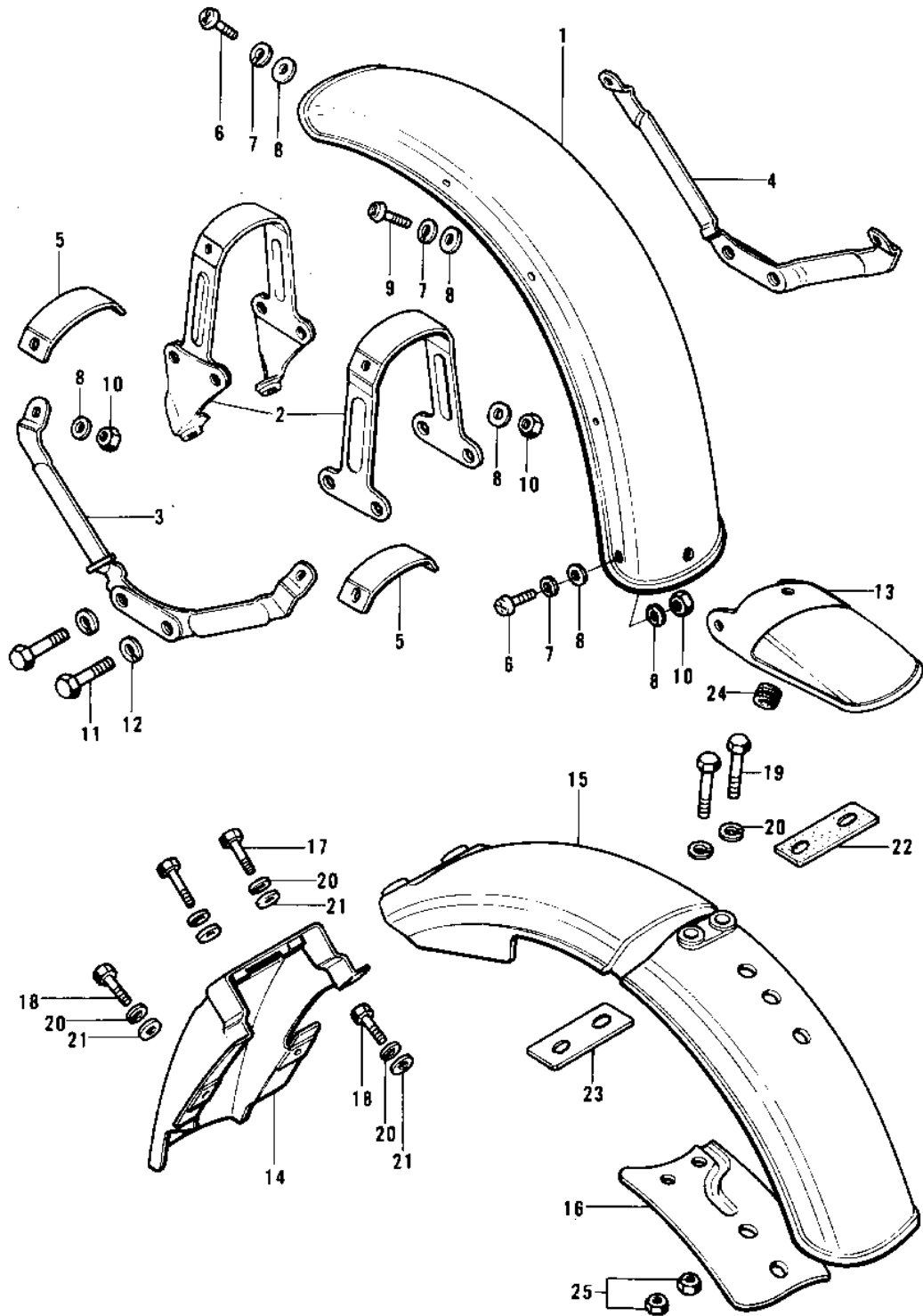


1975 KT250-A PARTS DIAGRAM

FENDERS



1975 KT250-A PARTS LIST

FENDERS

ITEM NAME	PART NUMBER	QUANTITY
FENDER-FR (Ref # 1)	35004-103	1
BRACE,FRONT FENDER (Ref # 2)	35009-034	1
BRACE,FRONT FENDER (Ref # 2)	35009-037	1
STAY,FRONT FENDER L.H (Ref # 3)	35011-031	1
STAY,FRONT FENDER R.H (Ref # 4)	35011-032	1
PLATE,FRONT FENDER (Ref # 5)	35013-016	2
SCREW PAN HEAD 6X16 (Ref # 6)	220E0616	6
WASHER SPRING 6MM (Ref # 7)	461F0600	9
WASHER PLAIN 6MM (Ref # 8)	411B0600	5
SCREW PAN HEAD 6X20 (Ref # 9)	220E0620	4
NUT 6MM (Ref # 10)	311B0600	9
BOLT-SMALL-UPSET,8X18 (Ref # 11)	115G0818	4
WASHER SPRING 8MM (Ref # 12)	461F0800	4
FLAP,FRONT FENDER (Ref # 13)	35019-010	1
FENDER-RR (Ref # 14)	35022-128	1
FENDER-RR (Ref # 15)	35022-127	1
BRACKET,REAR FENDER (Ref # 16)	35034-022	1
BOLT 6X22 (Ref # 17)	112B0622	2
BOLT 6X22 (Ref # 17)	112B0622	AL
BOLT-UPSET 6X14 (Ref # 18)	112B0614	2
BOLT-UPSET 6X14 (Ref # 18)	112B0614	AL
BOLT-UPSET (Ref # 19)	112G0625	2
BOLT-UPSET (Ref # 19)	112G0625	AL
WASHER SPRING 6MM (Ref # 20)	461F0600	6
WASHER 6.5X20X1.6T (Ref # 21)	92022-125	4
DAMPER-RUBBER (Ref # 22)	92075-072	1
BRACKET,REAR FENDER (Ref # 23)	35026-008	1
GROMMET (Ref # 24)	92071-024	1
NUT,6MM (Ref # 25)	92019-019	2