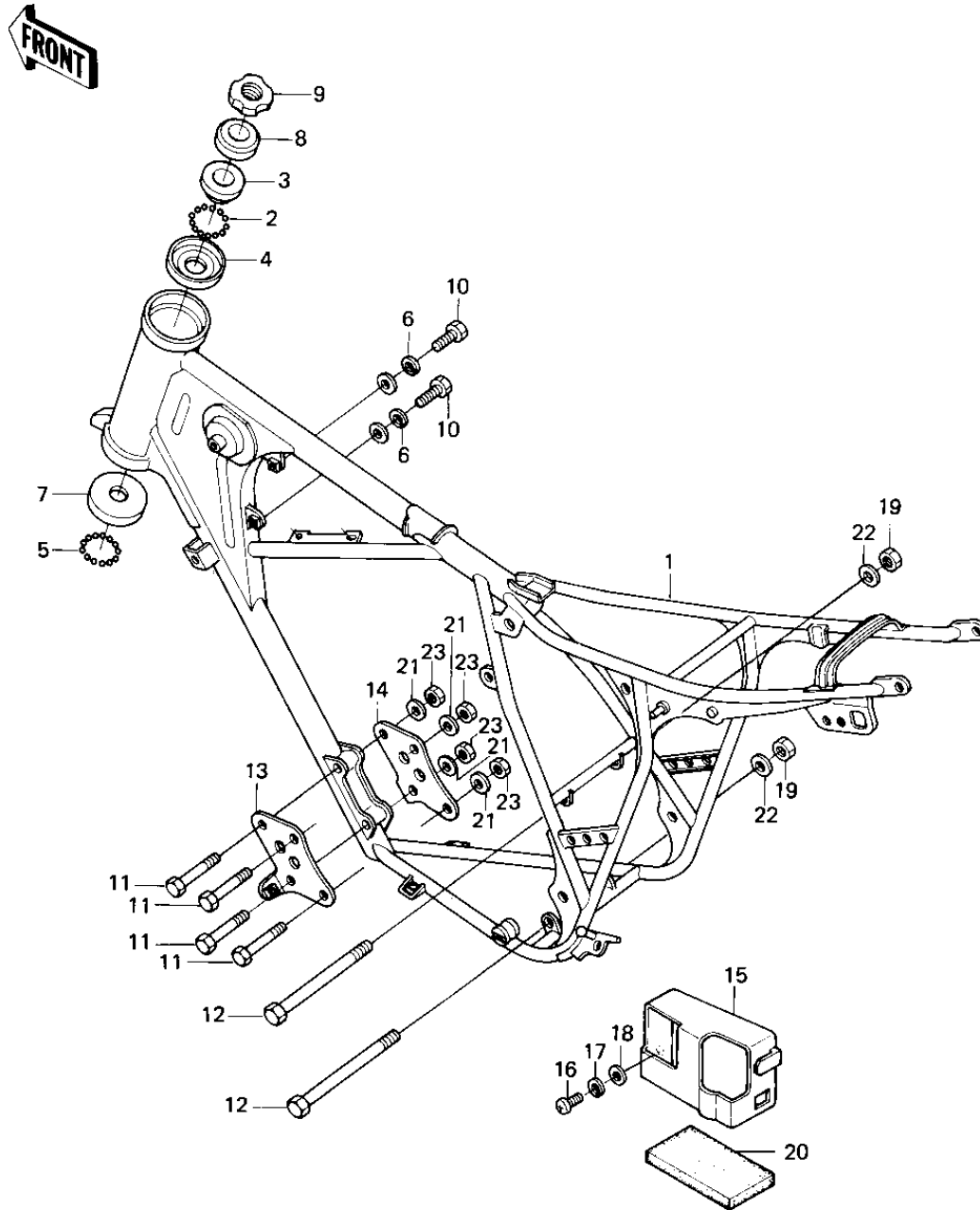


# 1980 KE175 PARTS DIAGRAM

## FRAME/FRAME FITTINGS



# 1980 KE175 PARTS LIST

## FRAME/FRAME FITTINGS

| ITEM NAME                        | PART NUMBER | QUANTITY |
|----------------------------------|-------------|----------|
| FRAME (Ref # 1)                  | 32002-1142  | 1        |
| BALL STEEL 3/16' (Ref # 2)       | 600A0600    | 23       |
| CONE,STRG STM BRG,UP (Ref # 3)   | 92047-014   | 1        |
| RACE,STRG STM BEARING (Ref # 4)  | 92048-009   | 1        |
| BALL STEEL 1/4' (Ref # 5)        | 600A0800    | 19       |
| COLLAR,REAR FENDER (Ref # 6)     | 92027-1181  | 2        |
| RACE STEERING BEARING (Ref # 7)  | 92048-005   | 1        |
| CAP,STEERING STEM (Ref # 8)      | 46098-018   | 1        |
| NUT,STEERING STEM (Ref # 9)      | 92090-022   | 1        |
| BOLT-UPSET,6X40 (Ref # 10)       | 112G0640    | 2        |
| BOLT-FLANGE (Ref # 11)           | 92001-1582  | 4        |
| BOLT,HEX HEAD,10X120 (Ref # 12)  | 92001-1247  | 2        |
| PLATE,ENGINE MOUNT,LH (Ref # 13) | 13169-1156  | 1        |
| PLATE,ENGINE MOUNT,RH (Ref # 14) | 13169-1157  | 1        |
| COVER,BATTERY (Ref # 15)         | 14025-1048  | 1        |
| SCREW PAN HEAD 6X12 (Ref # 16)   | 220B0612    | 1        |
| WASHER SPRING 6MM (Ref # 17)     | 461F0600    | 1        |
| WASHER PLAIN 6MM (Ref # 18)      | 411B0600    | 1        |
| NUT,LOCK,10MM (Ref # 19)         | 92019-021   | 2        |
| MAT,BATTERY (Ref # 20)           | 32103-027   | 1        |
| WASHER PLAIN 8MM (Ref # 21)      | 411B0800    | 4        |
| WASHER PLAIN 10MM (Ref # 22)     | 411B1000    | 2        |
| NUT,LOCK,8MM (Ref # 23)          | 92015-1124  | 4        |