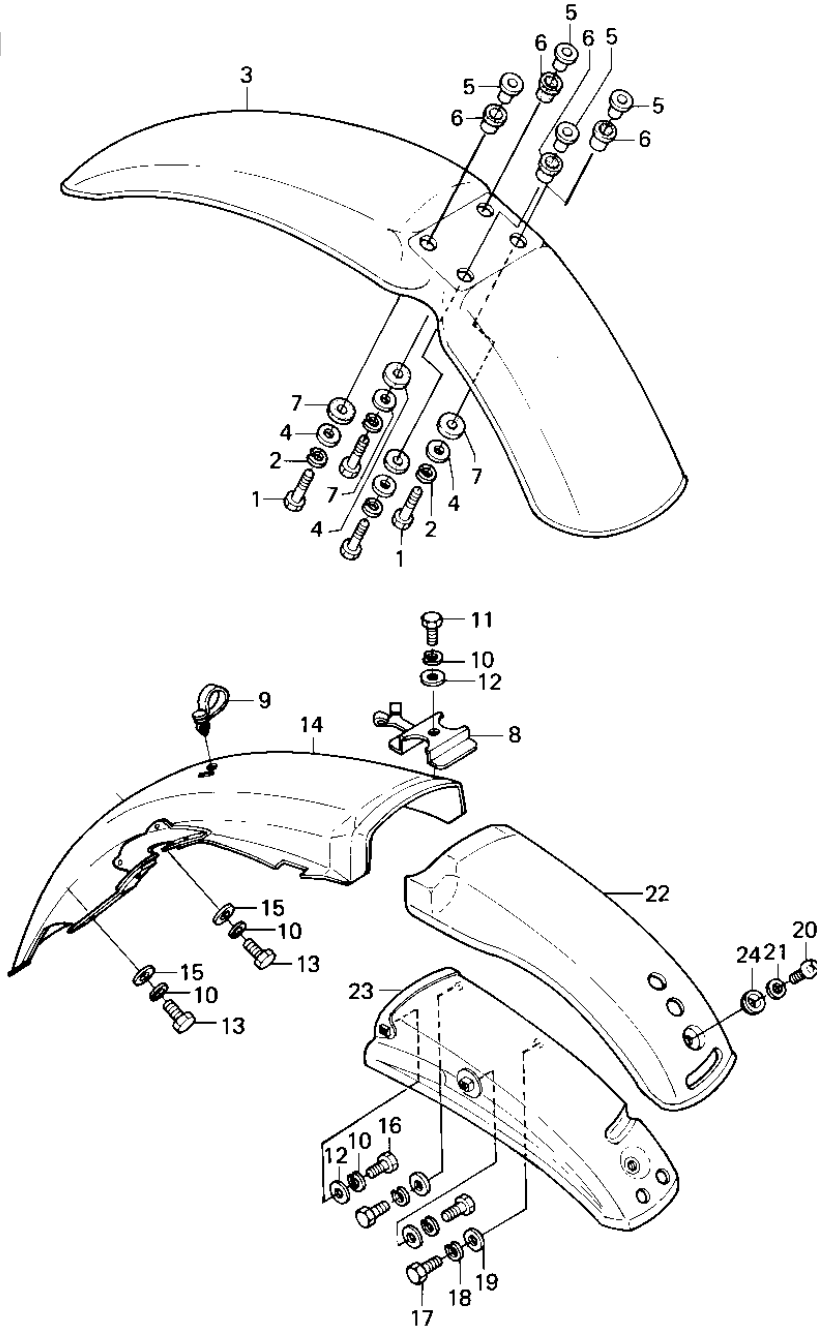


1981 KE175 PARTS DIAGRAM

FENDERS ('80-'81 KE175-D2/D3)



1981 KE175 PARTS LIST

FENDERS ('80-'81 KE175-D2/D3)

ITEM NAME	PART NUMBER	QUANTITY
BOLT-UPSET (Ref # 1)	112G0625	4
WASHER SPRING 6MM (Ref # 2)	461F0600	4
FENDER-FR,F.RED (Ref # 3)	35004-1024-6L	1
FENDER-FR,B.BLUE (Ref # 3)	35004-1024-6K	1
FENDER-FR,S.B.YELLOW (Ref # 3)	35004-1024-6G	1
WASHER 6.5X20X1.6T (Ref # 4)	92022-125	4
COLLAR (Ref # 5)	92027-194	4
DAMPER RUBBER (Ref # 6)	92075-103	4
DAMPER RUBBER,RR FEND (Ref # 7)	92075-121	4
HOLDER,WIRING HARNESS (Ref # 8)	13091-1022	1
CLAMP (Ref # 9)	92037-1163	1
WASHER SPRING 6MM (Ref # 10)	461F0600	5
BOLT-UPSET 6X14 (Ref # 11)	112B0614	1
WASHER PLAIN 6MM (Ref # 12)	411B0600	3
BOLT-UPSET,6X16 (Ref # 13)	112G0616	2
FENDER-RR (Ref # 14)	35022-1017	1
WASHER 6.5X20X1.6T (Ref # 15)	92022-125	2
BOLT-UPSET,6X12 (Ref # 16)	112G0612	2
BOLT-SMALL-UPSET,8X18 (Ref # 17)	115G0818	2
WASHER SPRING 8MM (Ref # 18)	461F0800	2
WASHER PLAIN 8MM (Ref # 19)	410B0800	2
SCREW PAN HEAD 6X12 (Ref # 20)	220B0612	1
WASHER PLAIN 6MM (Ref # 21)	410B0600	1
FENDER-RR,F.RED (Ref # 22)	35022-1018-6L	1
FENDER-RR,B.BLUE (Ref # 22)	35022-1018-6K	1
FENDER-RR,YELLOW (Ref # 22)	35022-1018-6G	1
REINFORCE,REAR FENDER (Ref # 23)	35034-1029	1
COLLAR,REAR FENDER (Ref # 24)	92027-1018	1