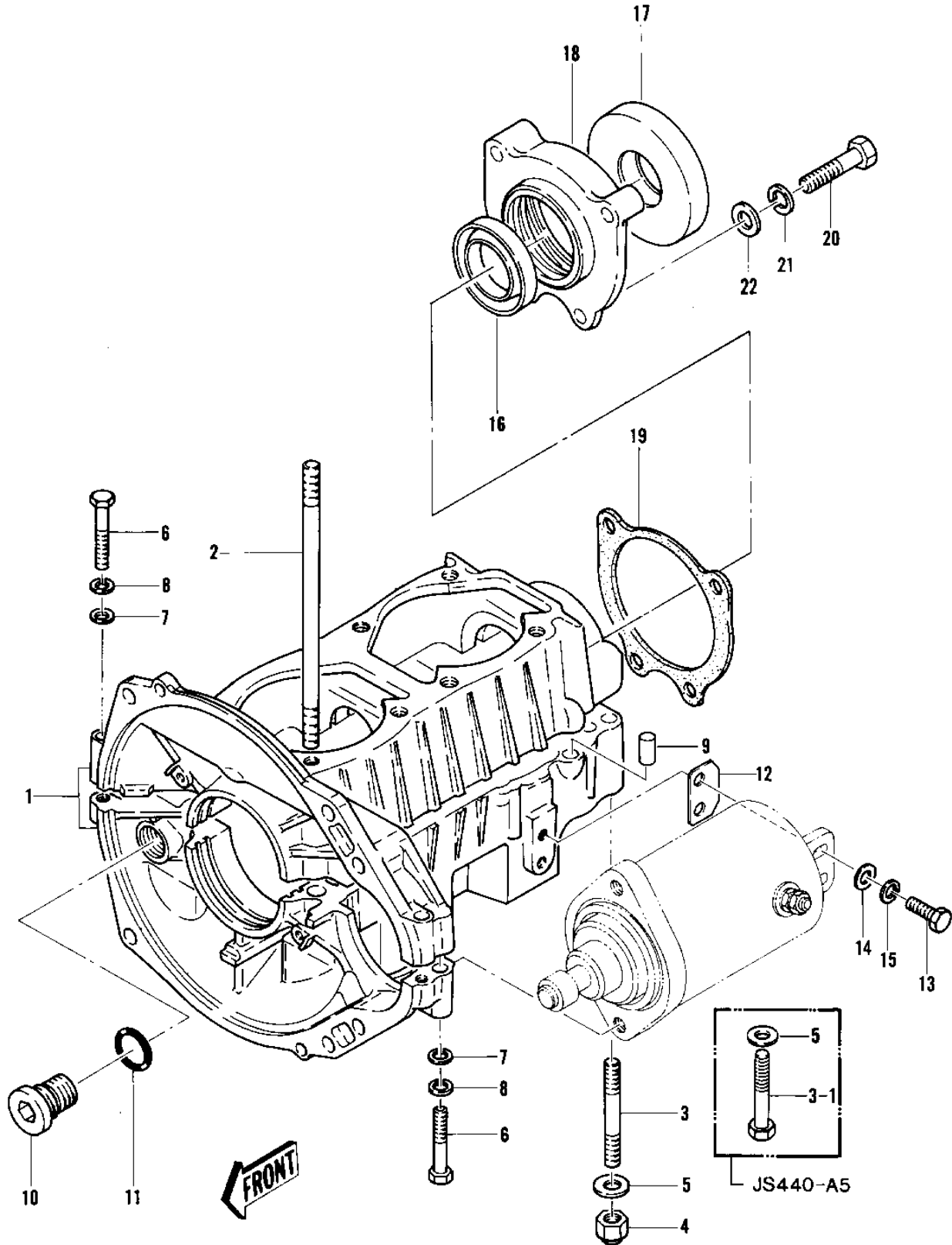


# 1981 JS440 PARTS DIAGRAM

CRANKCASE ('79-'81 A3/A4/A4A/A5)



# 1981 JS440 PARTS LIST

CRANKCASE ('79-'81 A3/A4/A4A/A5)

ITEM NAME	PART NUMBER	QUANTITY
CRANKCASE SET (Ref # 1)	14001-3015	1
STUD (Ref # 2)	92004-507	8
STUD (Ref # 3)	92004-514	10
NUT-CAP,8MM (Ref # 4)	92015-3003	10
WASHER (Ref # 5)	410S0800	10
BOLT 6X40 (Ref # 6)	110R0640	3
WASHER (Ref # 7)	410S0600	3
WASHER-SPRING,6MM (Ref # 8)	461S0600	3
PIN-DOWEL (Ref # 9)	92042-007	2
JOINT-STATOR WIRE (Ref # 10)	59071-516	1
"0" RING,16MM (Ref # 11)	670B2016	1
SHIM,STARTER,T=0.4M/M (Ref # 12)	92025-3012	AR
SHIM,STARTER,T=0.6M/M (Ref # 12)	92025-3013	AR
SHIM,STARTER,T=0.8M/M (Ref # 12)	92025-3014	AR
BOLT 6X20 (Ref # 13)	110R0620	2
WASHER (Ref # 14)	410S0600	2
WASHER-SPRING,6MM (Ref # 15)	461S0600	2
SEAL,OIL DC305513 (Ref # 16)	92050-512	1
SEAL,OIL SCY547410 (Ref # 17)	92050-508	1
HOUSING,OIL SEAL (Ref # 18)	23072-513-9G	1
GASKET,HOUSING (Ref # 19)	92065-515	1
BOLT,8X38 (Ref # 20)	92001-3017	4
WASHER SPRING 8MM (Ref # 21)	461S0800	4
WASHER (Ref # 22)	410S0800	4