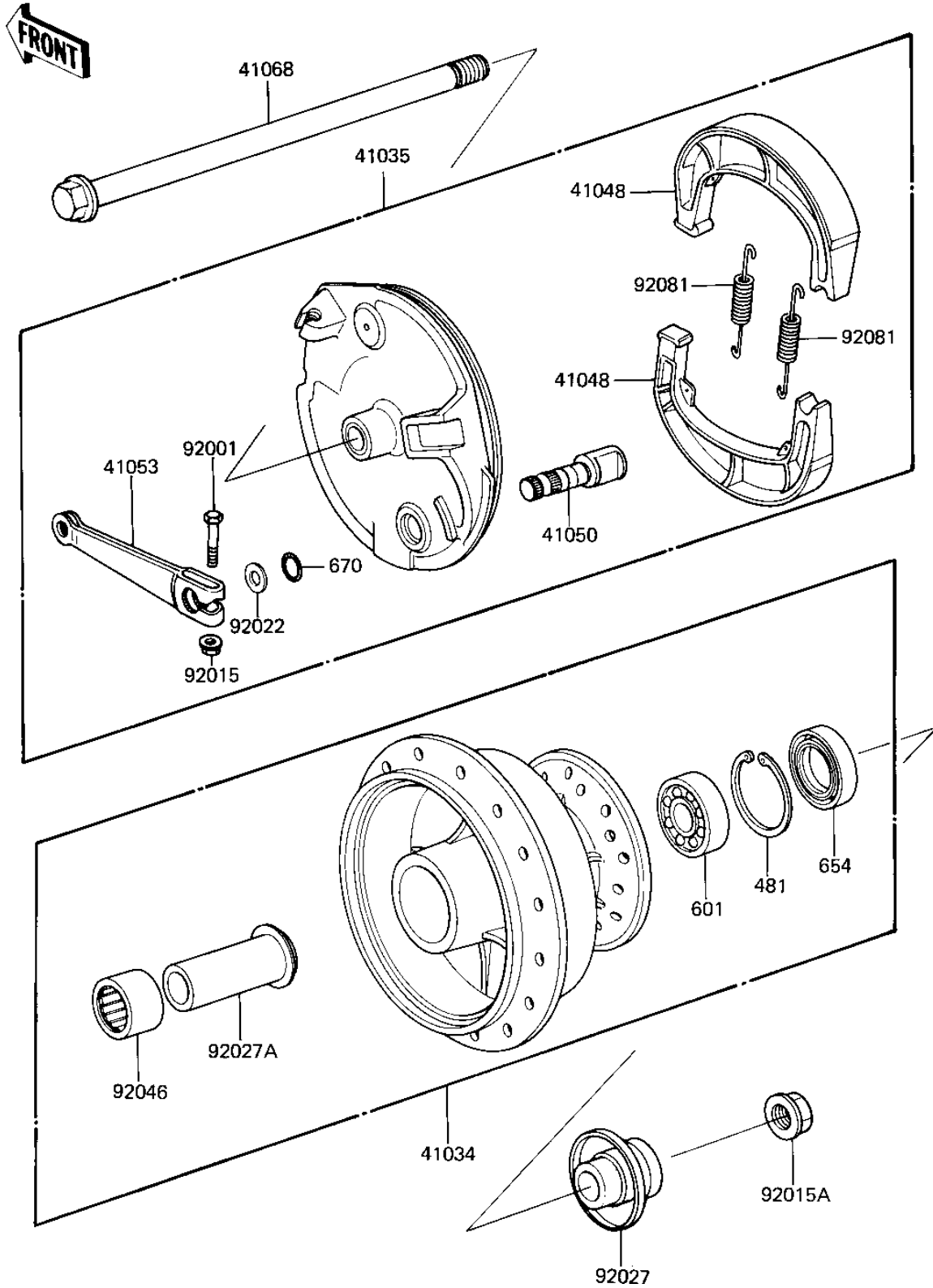


1982 KX80 PARTS DIAGRAM

FRONT HUB/BRAKE ('82 KX80-C2)

F 2250-0041



1982 KX80 PARTS LIST

FRONT HUB/BRAKE ('82 KX80-C2)

| ITEM NAME | PART NUMBER | QUANTITY |
|-------------------------------------|-------------|----------|
| DRUM-ASSY,FR BRK (Ref # 41034) | 41034-1053 | 1 |
| PANEL-ASY,FR BRK (Ref # 41035) | 41035-1085 | 1 |
| SHOE,BRAKE (Ref # 41048) | 41048-1021 | 2 |
| CAM,BRAKE,FRONT (Ref # 41050) | 41050-1009 | 1 |
| LEVER,BRAKE CAM,FRONT (Ref # 41053) | 41053-1011 | 1 |
| AXLE,FRONT (Ref # 41068) | 41068-1011 | 1 |
| BOLT,HEX HEAD,6X30 (Ref # 92001) | 92001-1135 | 1 |
| NUT,6MM (Ref # 92015) | 41072-007 | 1 |
| NUT,10MM (Ref # 92015A) | 92015-1415 | 1 |
| WASHER (Ref # 92022) | 92022-257 | 1 |
| COLLAR,FRONT AXLE (Ref # 92027) | 92027-1094 | 1 |
| COLLAR,L=47 (Ref # 92027A) | 92027-1378 | 1 |
| BEARING-NEEDLE,RNA490 (Ref # 92046) | 92046-1039 | 1 |
| SPRING,BRAKE SHOE (Ref # 92081) | 92081-1766 | 2 |
| CIRCLIP,35MM (Ref # 481) | 481J3500 | 1 |
| BEARING,BALL,#6300 (Ref # 601) | 601B6300 | 1 |
| OIL SEAL,20X35X7 (Ref # 654) | 654A203507 | 1 |
| "O" RING,12MM (Ref # 670) | 670B2012 | 1 |