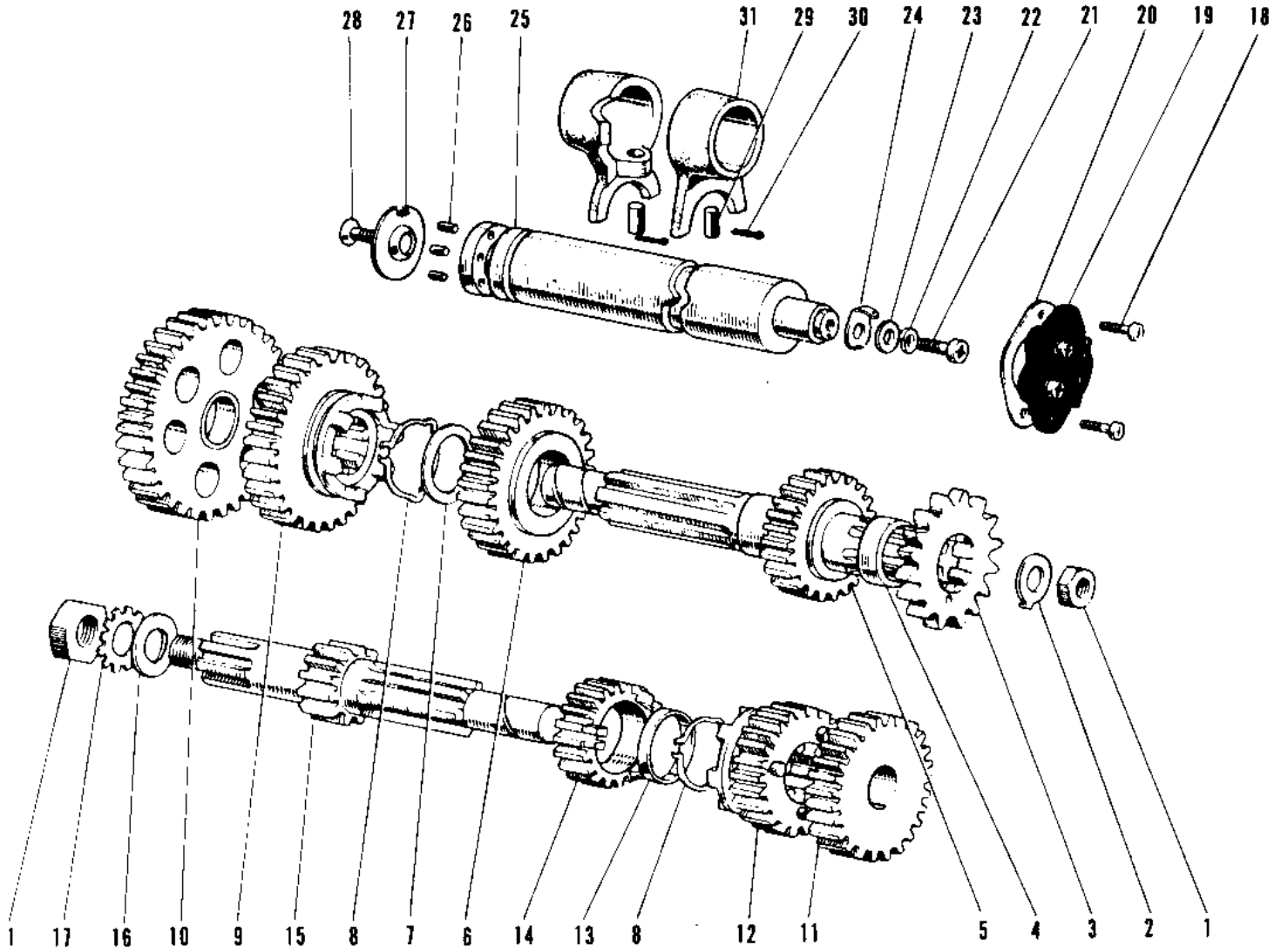


1968 Sidewinder PARTS DIAGRAM

TRANSMISSION/CHANGE DRUM



1968 Sidewinder PARTS LIST

TRANSMISSION/CHANGE DRUM

ITEM NAME	PART NUMBER	QUANTITY
NUT,12MM (Ref # 1)	92016-024	
NUT,12MM (Ref # 1)	92016-024	
WASHER LOCK 12MM (Ref # 2)	92024-002	
ENGINE SPROCKET 15T (Ref # 2)	13144-028	
ENGINE SPROCKET 14T (Ref # 2)	13144-033	
ENGINE SPROCKET 16T (Ref # 2)	13144-034	
SPACER ENG SPROCKET (Ref # 4)	92027-009	
COLLAR,ENG SPROCKET (Ref # 4)	92027-1595	
SHAFT OUTPUT (Ref # 5)	13128-019	
3RD GEAR OUTPUT SHAFT (Ref # 6)	13133-014	
WASHER 22MM (Ref # 7)	92022-106	
CIRCLIP,25MM (Ref # 8)	92033-025	
CIRCLIP,25MM (Ref # 8)	92033-025	
2ND GEAR OUTPUT SHAFT (Ref # 9)	13131-018	
LOW GEAR OUTPUT SHAFT (Ref # 10)	13129-023	
TOP GEAR DRIVE SHAFT (Ref # 11)	13136-021	
3RD GEAR DRIVE SHAFT (Ref # 12)	13132-013	
SPACER DR SHT 2ND GER (Ref # 13)	92027-083	
2ND GEAR DRIVE SHAFT (Ref # 14)	13130-016	
SHAFT DRIVE (Ref # 15)	13127-018	
WASHER PLAIN 12MM (Ref # 16)	92022-105	
WASHER LOCK 12MM (Ref # 17)	464H1200	
SCREW PAN HEAD 5X16 (Ref # 18)	220B0516	
UNAVAILABLE IN PRICE BOOK (Ref # 18)	214B0516A	
SWITCH,NEUTRAL (Ref # 19)	13151-1003	
SWITCH,NEUTRAL (Ref # 19)	13151-1003	
GASKET NEUTRAL SWITCH (Ref # 20)	13146-002	
GASKET NEUTRAL SWITCH (Ref # 20)	13146-002	
UNAVAILABLE IN PRICE BOOK (Ref # 21)	92011-003	

1968 Sidewinder PARTS LIST

TRANSMISSION/CHANGE DRUM

ITEM NAME	PART NUMBER	QUANTITY
SCREW PAN HEAD 6X16 (Ref # 21)	220B0616	
WASHER SPRING 6MM (Ref # 22)	461F0600	
WASHER PLAIN 6MM (Ref # 23)	410B0600	
ROTOR,NEUTRAL INDICTR (Ref # 24)	21007-1003	
ROTOR,NEUTRAL INDICTR (Ref # 24)	21007-1003	
DRUM GEAR CHANGE (Ref # 25)	13141-014	
PIN GEAR CHANGE DRUM (Ref # 26)	92043-011	
PLATE CHANGE DRUM PIN (Ref # 27)	13142-002	
SCREW CNTSNK HD 6X16 (Ref # 28)	212B0616	
PIN SELECT FORK GUIDE (Ref # 29)	92043-005	
PIN COTTER 3.0X20 (Ref # 30)	550D3020	
UNAVAILABLE IN PRICE BOOK (Ref # 31)	13140-015	
FORK SELECTOR (Ref # 31)	13140-020	