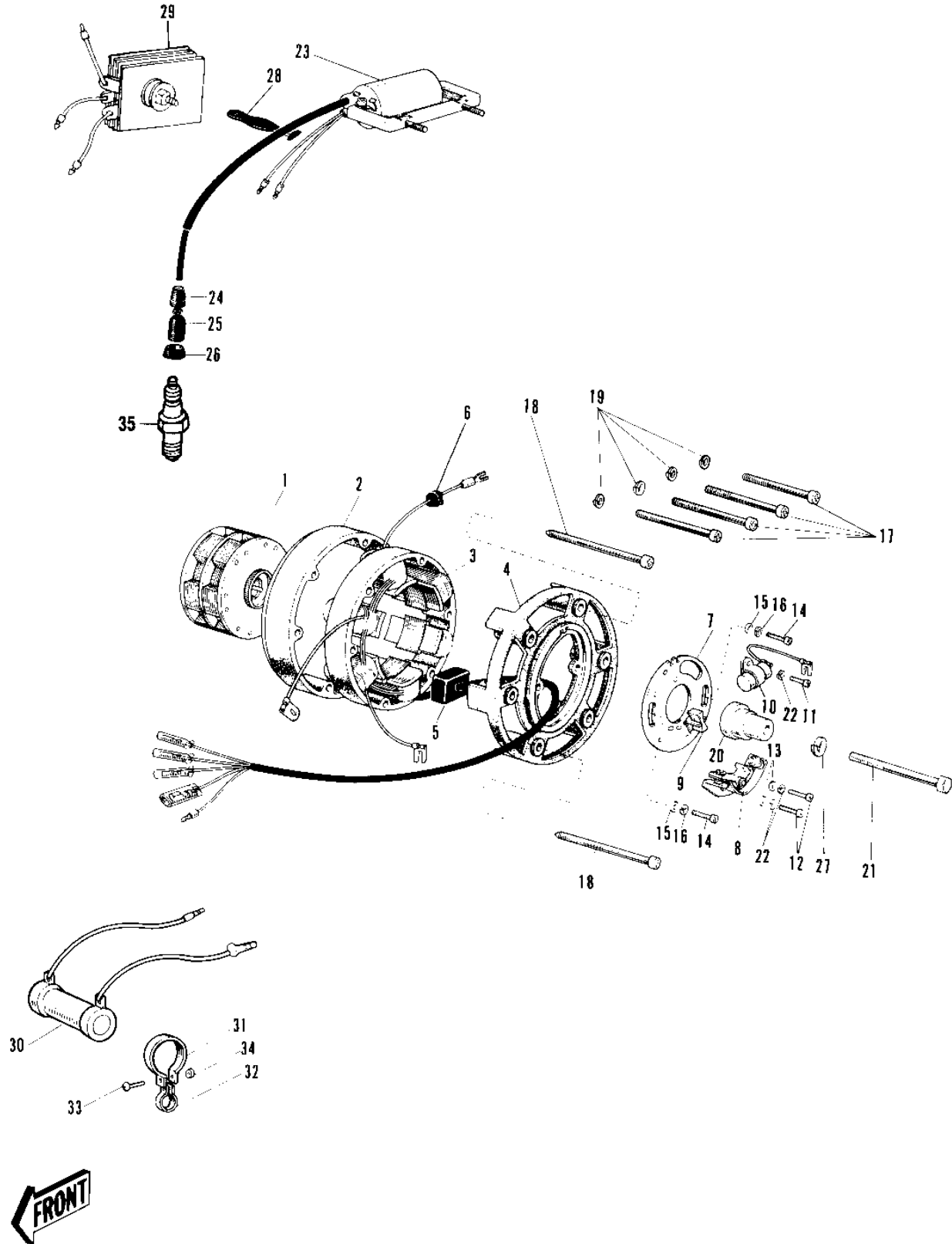


# 1968 Sidewinder PARTS DIAGRAM

IGNITION/GENERATOR/RECTIFIER



R  
—

# 1968 Sidewinder PARTS LIST

## IGNITION/GENERATOR/RECTIFIER

ITEM NAME	PART NUMBER	QUANTITY
MAGNETO (Ref # 1-22)	21002-013	
ROTOR (Ref # 1)	21007-015	
UNAVAILABLE IN PRICE BOOK (Ref # 2)	21004-007	
STATOR (Ref # 3)	21003-009	
FRONT COVER (Ref # 4)	21005-006	
GROMMET ENG RUBBER B (Ref # 6)	92071-013	
PLATE CONTACT BREAKER (Ref # 7)	21021-002	
BREAKER ASSY CONTACT (Ref # 8)	21008-010	
UNAVAILABLE IN PRICE BOOK (Ref # 9)	21019-017	
CONDENSER (Ref # 10)	21013-019	
SCREW PAN HEAD 4X6 (Ref # 11)	220B0406	
SCREW PAN HEAD 4X8 (Ref # 12)	220B0408	
WASHER PLAIN 4MM (Ref # 13)	410B0400	
SCREW PAN HEAD 5X10 (Ref # 14)	220B0510	
WASHER PLAIN 5MM (Ref # 15)	410B0500	
WASHER SPRING 5MM (Ref # 16)	461F0500	
SCREW PAN HEAD 6X55 (Ref # 17)	220B0655	
SCREW PAN HEAD 5X80 (Ref # 18)	21023-008	
SCREW PAN HEAD 5X80 (Ref # 18)	220E0580A	
WASHER SPRING 6MM (Ref # 19)	461F0600	
CAM (Ref # 20)	21014-005	
BOLT HEX HEAD 8X63 (Ref # 21)	114B0863	
WASHER SPRING 4MM (Ref # 22)	461F0400	
COIL IGNITION (Ref # 23)	21121-030	
GROMMET (Ref # 24)	92071-517	
CAP-SPARK PLUG (Ref # 25)	21130-016	
GROMMET PLUG CAP A (Ref # 26)	21131-002	
WASHER SPRING 8MM (Ref # 27)	461F0800	
BAND RUBBER (Ref # 28)	92072-018	

# 1968 Sidewinder PARTS LIST

## IGNITION/GENERATOR/RECTIFIER

ITEM NAME	PART NUMBER	QUANTITY
RECTIFIER (Ref # 29)	21061-009	
RESISTOR (Ref # 30)	21154-001	
CLAMP (Ref # 31)	92037-048	
CLAMP-RESISTOR (Ref # 32)	92037-049	
SCREW PAN HEAD 6X12 (Ref # 33)	220B0612	
NUT 6MM (Ref # 34)	311B0600	
SPARK PLUG B9HS (Ref # 35)	B9HS	
SPARK PLUG B9HS (Ref # 35)	B9HS	
SPARK PLUG B9HS (Ref # 35)	B9HS	
SPARK PLUG B9HS (Ref # 35)	B9HS	