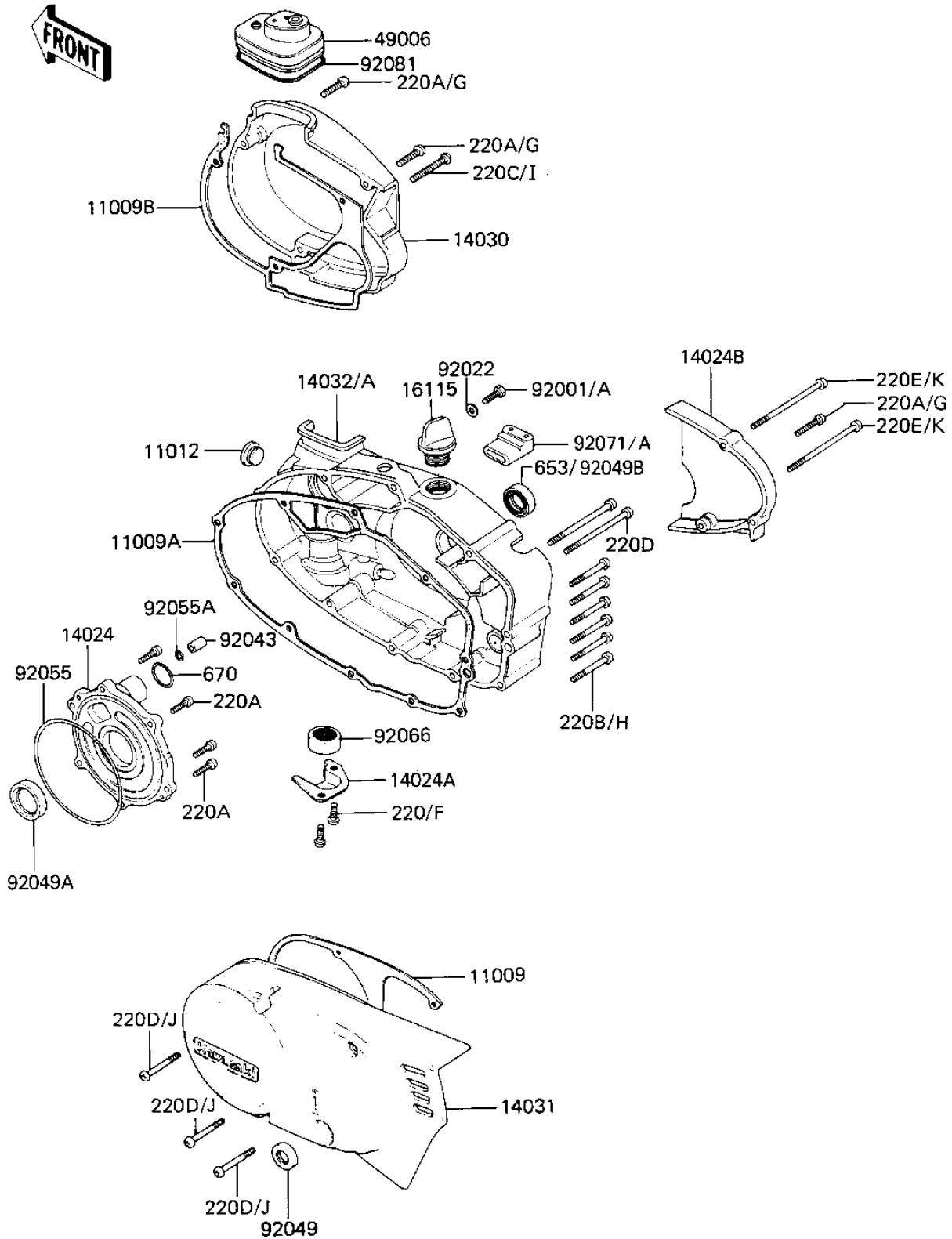


# 1984 KE100 PARTS DIAGRAM

ENGINE COVERS

E1431-0024



# 1984 KE100 PARTS LIST

## ENGINE COVERS

ITEM NAME	PART NUMBER	QUANTITY
GASKET,GENERATOR COVE (Ref # 11009)	11060-1202	1
GASKET,CLUTCH COVER (Ref # 11009A)	11060-1198	1
GASKET,CARBURETOR COV (Ref # 11009B)	11060-1201	1
GASKET,CARBURETOR COV (Ref # 11012)	11060-1201	1
CAP CARB MOUNT HOLE (Ref # 14024)	14039-001	1
COVER,CLUTCH CABLE (Ref # 14024A)	14025-1137	1
COVER,OIL PUMP (Ref # 14024B)	14025-1185	1
COVER,CARBURETOR (Ref # 14030)	14030-1011	1
COVER,L.H.ENGINE (Ref # 14031)	14031-1043	1
COVER-CLUTCH (Ref # 14032A)	14032-1096	1
FILLER,OIL (Ref # 16115)	16115-018	1
CAP,CARBURETOR (Ref # 49006)	14038-035	1
BOLT,6X14 (Ref # 92001A)	92001-1935	1
WASHER OIL PUMP BANJO (Ref # 92022)	92022-077	1
PIN DOWEL 8X16 (Ref # 92043)	92042-017	1
OIL SEAL SB12205 (Ref # 92049)	92049-004	1
SEAL-OIL (Ref # 92049A)	92049-1250	1
OIL SEAL TB16267 (Ref # 92049B)	92051-003	1
"O" RING,100MM (Ref # 92055)	92055-010	1
"O" RING,8MM (Ref # 92055A)	92055-029	1
DRAIN,FUEL (Ref # 92066)	16116-006	1
GROMMET,OVERFLOW (Ref # 92071A)	92071-1024	1
SPRING COIL (Ref # 92081)	92081-047	1
SCREW PAN HEAD 6X20 (Ref # 220A)	220B0620	6
SCREW PAN HEAD 6X45 (Ref # 220D)	220B0645	2
SCREW-PAN-CROS (Ref # 220F)	220X0612	2
SCREW-PAN-CROS (Ref # 220G)	220X0620	3
SCREW-PAN-CROS (Ref # 220H)	220X0630	6
SCREW-PAN-CROS (Ref # 220I)	220X0635	1

# 1984 KE100 PARTS LIST

## ENGINE COVERS

ITEM NAME	PART NUMBER	QUANTITY
SCREW-PAN-CROS (Ref # 220J)	220X0645	3
SCREW-PAN-CROS (Ref # 220K)	220X0675	2
"O" RING,26MM (Ref # 670)	670B3026	1