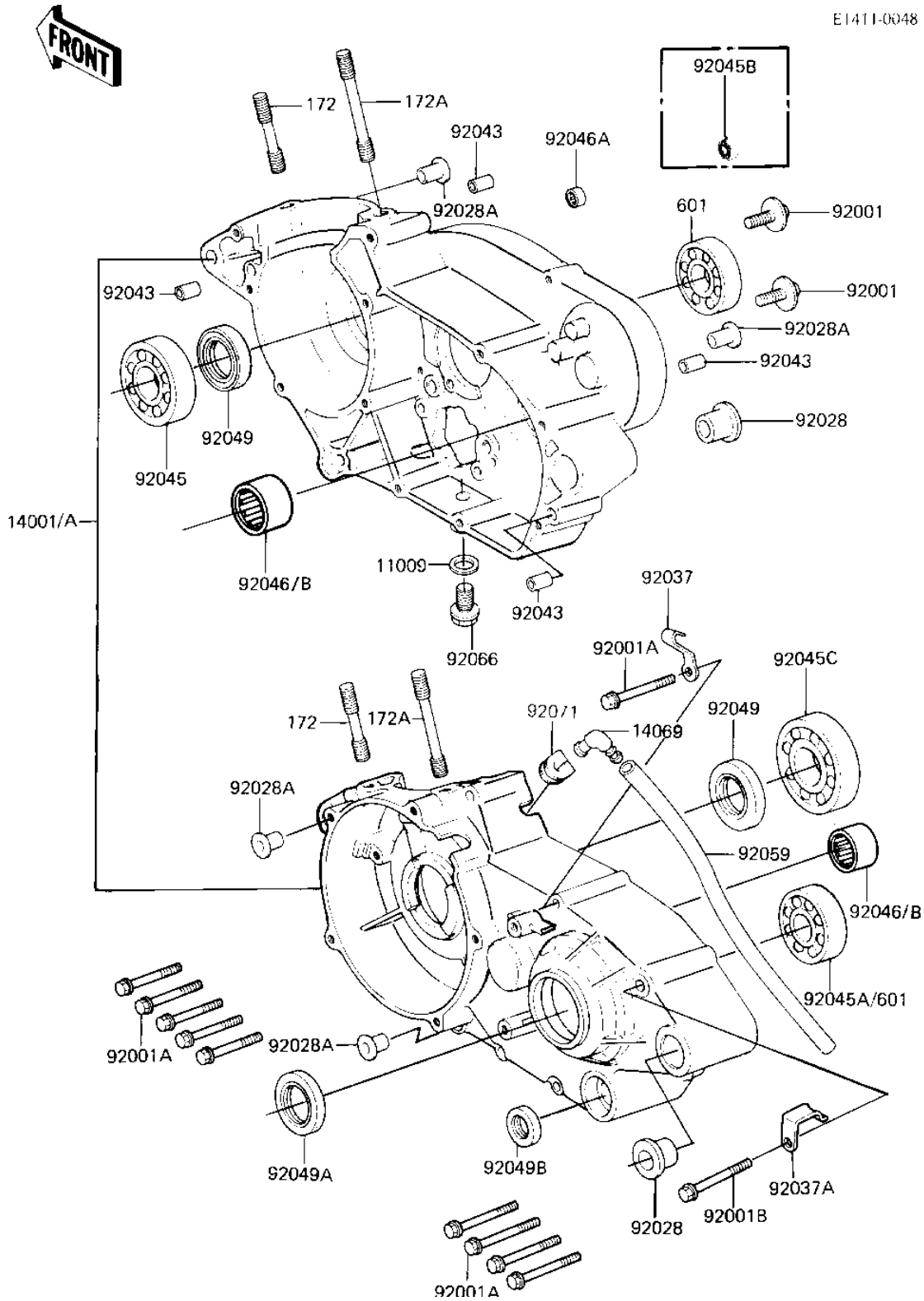


# 1982 KX125 PARTS DIAGRAM

## CRANKCASE

E1411-0048



# 1982 KX125 PARTS LIST

## CRANKCASE

ITEM NAME	PART NUMBER	QUANTITY
GASKET CHECK VALVE (Ref # 11009)	92065-058	1
SET-CRANKCASE (Ref # 14001)	14001-5109	1
BREATHER ASSY (Ref # 14069)	14069-1001	1
BOLT,CLUTCH SPR FITT (Ref # 92001)	92001-1066	2
BOLT-FLANGED-SMALL (Ref # 92001A)	132G0640	10
BOLT,FLANGED,6X65 (Ref # 92001B)	92001-1787	1
BUSHING,CASE PIVOT (Ref # 92028)	92028-1123	2
BUSHING,CRANKCASE (Ref # 92028A)	92028-1133	4
CLAMP CABLE (Ref # 92037)	92037-016	1
CLAMP,HARNESS (Ref # 92037A)	92037-1318	1
PIN-DOWEL (Ref # 92043)	92042-007	4
BEARING,BALL (Ref # 92045)	92045-1006	1
BEARING,BALL,#6305SH2 (Ref # 92045C)	92045-1024	1
BEARING-NEEDLE,HMK151 (Ref # 92046)	92046-1058	2
BEARING-NEEDLE,TLA69Z (Ref # 92046A)	92046-1043	1
OIL SEAL,TBJ-20407 (Ref # 92049)	92049-1065	2
OIL SEAL SC25376 (Ref # 92049A)	92050-013	1
OIL SEAL,TB13225.5 (Ref # 92049B)	92051-005	1
TUBE,6X9X750 (Ref # 92059)	92059-1372	1
PLUG OIL DRAIN (Ref # 92066)	92067-001	1
GROMMET (Ref # 92071)	92071-042	1
STUD,8X25 (Ref # 172)	92004-1008	2
STUD 8X60 (Ref # 172A)	172G0860	2
BEARING BALL #6204 (Ref # 601)	601B6204	1
BEARING BALL #6303 (Ref # 601A)	601B6303	1