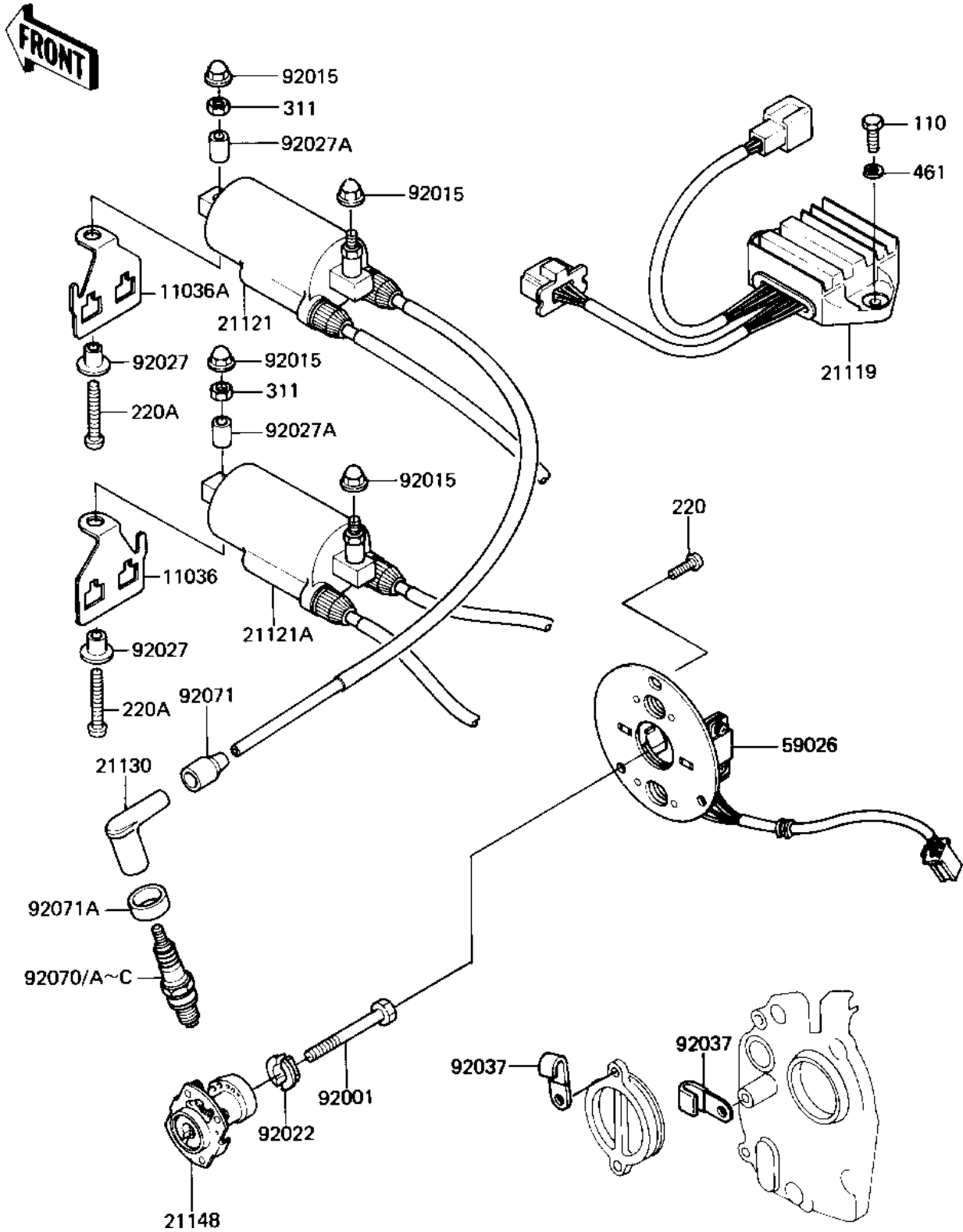


1983 GPz PARTS DIAGRAM

IGNITION

E1830-0092



1983 GPz PARTS LIST

IGNITION

ITEM NAME	PART NUMBER	QUANTITY
BRACKET-A,HARNESS,LH (Ref # 11036)	11036-1471	1
BRACKET-A,HARNESS,RH (Ref # 11036A)	11036-1472	1
IGNITER (Ref # 21119)	21119-1039	1
COIL-IGNITION (Ref # 21121)	21121-1062	1
COIL-IGNITION (Ref # 21121A)	21121-1063	1
CAP,SPARK PLUG"LD05F" (Ref # 21130)	21130-1003	4
ADVANCER, (Ref # 21148)	21148-1016	1
COIL,PULSING (Ref # 59026)	59026-1009	1
BOLT-8X63 (Ref # 92001)	92001-1397	1
NUT,CAP,6M/M (Ref # 92015)	92015-1153	4
WASHER,SPARK ADVANCER (Ref # 92022)	92022-244	1
COLLAR,L=10.7 (Ref # 92027)	92027-1452	2
COLLAR,6.3X10X14 (Ref # 92027A)	92027-1453	2
CLAMP,WIRING HARNESS (Ref # 92037)	21126-008	2
SPARK PLUG D8EA (Ref # 92070A)	D8EA	4
SPARK PLUG DR8ES (Canada) (Ref # 92070B)	92070-1019	4
GROMMET,SPARK PLG CAP (Ref # 92071)	21132-005	4
GROMMET,SPARK PLUG (Ref # 92071A)	92071-1015	4
BOLT-UPSET,6X16 (Ref # 110)	112G0616	2
SCREW PAN HEAD 5X12 (Ref # 220)	220B0512	3
SCREW PAN HEAD 6X40 (Ref # 220A)	220B0640	2
NUT 6MM (Ref # 311)	311B0600	2
WASHER SPRING 6MM (Ref # 461)	461F0600	2