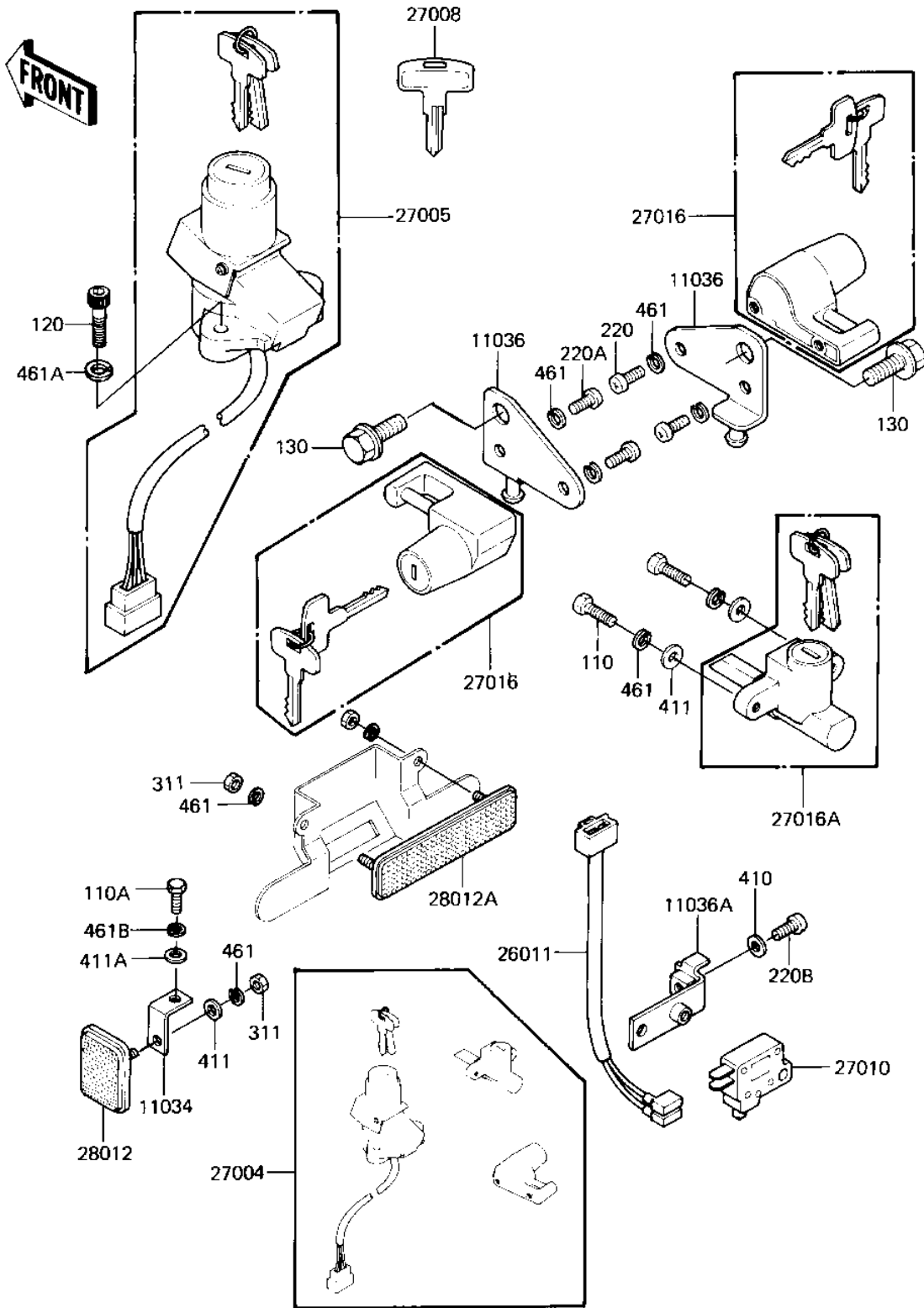


# 1983 GPz PARTS DIAGRAM

## IGNITION SWITCH/LOCKS/REFLECTORS

F2770-0118



# 1983 GPz PARTS LIST

## IGNITION SWITCH/LOCKS/REFLECTORS

ITEM NAME	PART NUMBER	QUANTITY
BRACKET,REFLEX REFLET (Ref # 11034)	11034-1540	2
BRACKET-A (Ref # 11036)	11036-1441	2
BRACKET-A,BRAKE SWITC (Ref # 11036A)	11036-1443	1
1WIRE-LEAD,LEAD (Ref # 26011)	26011-1152	1
SWITCH-ASSY (Ref # 27004)	27004-5154	1
SWITCH-ASSY-IGNITION (Ref # 27005)	27005-5029	1
KEY-LOCK,BLANK (Ref # 27008)	27008-1103	1
SWITCH (Ref # 27010)	27010-1063	1
LOCK ASSY,HELMET (Ref # 27016)	27016-5038	2
LOCK-ASSY (Ref # 27016A)	27016-5048	1
REFLECTOR,REFLEX(FRON (Ref # 28012)	28012-1003	2
REFLECTOR,REAR REFLEX (Ref # 28012A)	28012-1005	1
BOLT,5X14 (Ref # 110)	110B0514A	2
BOLT, 6X14, BLACK (Ref # 110A)	112C0614	2
BOLT SOCKET 6X16 (Ref # 120)	120Q0616	2
BOLT,FLANGED,8X14 (Ref # 130)	130G0814	2
SCREW PAN HEAD 5X10 (Ref # 220)	220B0510	2
SCREW PAN HEAD 5X12 (Ref # 220A)	220B0512	2
SCREW PAN HEAD 6X14 (Ref # 220B)	220B0614	1
NUT,5MM (Ref # 311)	311B0500	4
WASHER PLAIN 6MM (Ref # 410)	410B0600	1
WASHER PLAIN 5MM (Ref # 411)	411B0500	4
WASHER PLAIN (Ref # 411A)	411F0600	2
WASHER SPRING 5MM (Ref # 461)	461F0500	10
WASHER SPRING 6MM (Ref # 461A)	461F0600	2
WASHER-SPRING,6MM,BLA (Ref # 461B)	461K0600	2