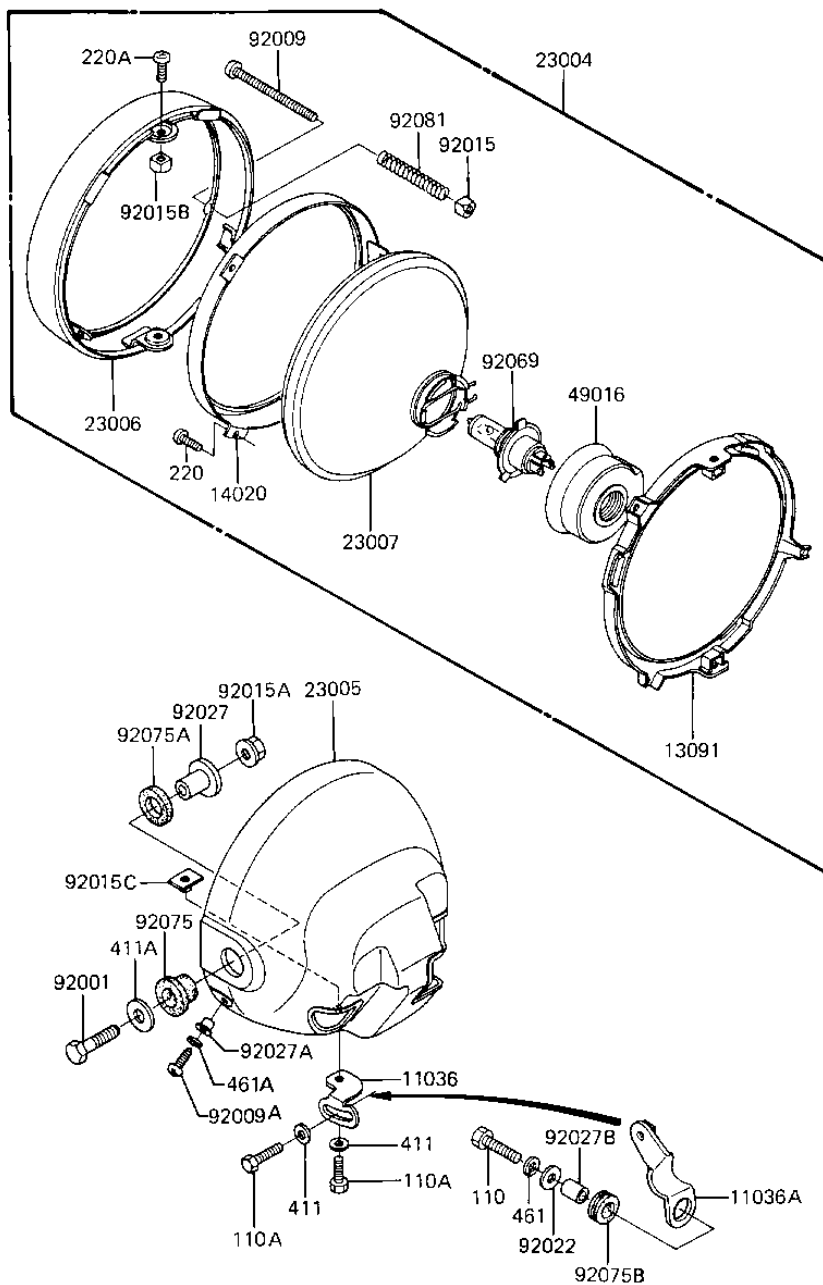


1983 Spectre PARTS DIAGRAM

HEADLIGHT (KZ1100-D2)

F2710-0143



1983 Spectre PARTS LIST

HEADLIGHT (KZ1100-D2)

ITEM NAME	PART NUMBER	QUANTITY
BRACKET-A,HEAD LAMP (Ref # 11036)	11036-1649	1
BRACKET-A,HEAD LAMP (Ref # 11036A)	11036-1737	1
HOLDER,HEAD LAMP (Ref # 13091)	13091-1160	1
RETAINER,HEAD LAMP (Ref # 14020)	14020-1018	1
LAMP-HEAD (Ref # 23004)	23004-1082	1
BODY-COMP-HEAD LAMP,E (Ref # 23005)	23005-1026-H8	1
RIM-LAMP (Ref # 23006)	23006-1019	1
LENS UNIT,HEAD LAMP (Ref # 23007)	23007-1009	1
DUST COVER (Ref # 49016)	49016-1016	1
BOLT 8X38 (Ref # 92001)	92001-1405	2
SCREW,FOCUS ADJU.4X52 (Ref # 92009)	92009-1033	1
SCREW,5X16 (Ref # 92009A)	92009-1693	2
NUT,4MM (Ref # 92015)	23020-018	1
NUT,8M/M (Ref # 92015A)	92015-1014	2
NUT,5MM (Ref # 92015B)	92015-1157	2
NUT-6MM,HEAD LAMP (Ref # 92015C)	92015-1231	1
WASHER 6.5X20X1.6T (Ref # 92022)	92022-125	1
COLLAR,HEAD LAMP FITT (Ref # 92027)	92027-1131	2
COLLAR,HEAD LAMP,BLAC (Ref # 92027A)	92027-1503	2
COLLAR,REAR FENDER (Ref # 92027B)	92027-162	1
BULB,12V-60/55W (Ref # 92069)	92069-1002	1
DAMPER,HEAD LAMP FITT (Ref # 92075)	92075-1109	2
DAMPER,HEAD LAMP FITT (Ref # 92075A)	92075-1110	2
DAMPER RUBBER,RR FENR (Ref # 92075B)	92075-209	1
SPRING FOCUS ADJUST (Ref # 92081)	23014-005	1
BOLT-UPSET (Ref # 110)	112G0625	1
BOLT, 6X14, BLACK (Ref # 110A)	112C0614	2
SCREW PAN HEAD 3X8 (Ref # 220)	220B0308	2
SCREW PAN HEAD 5X10 (Ref # 220A)	220B0510	2

1983 Spectre PARTS LIST

HEADLIGHT (KZ1100-D2)

ITEM NAME	PART NUMBER	QUANTITY
WASHER PLAIN (Ref # 411)	411F0600	2
WASHER,PLAIN,8MM (Ref # 411A)	411D0800	2
WASHER SPRING 6MM (Ref # 461)	461F0600	1
WASHER-SPRING,5MM,BLA (Ref # 461A)	461K0500	2