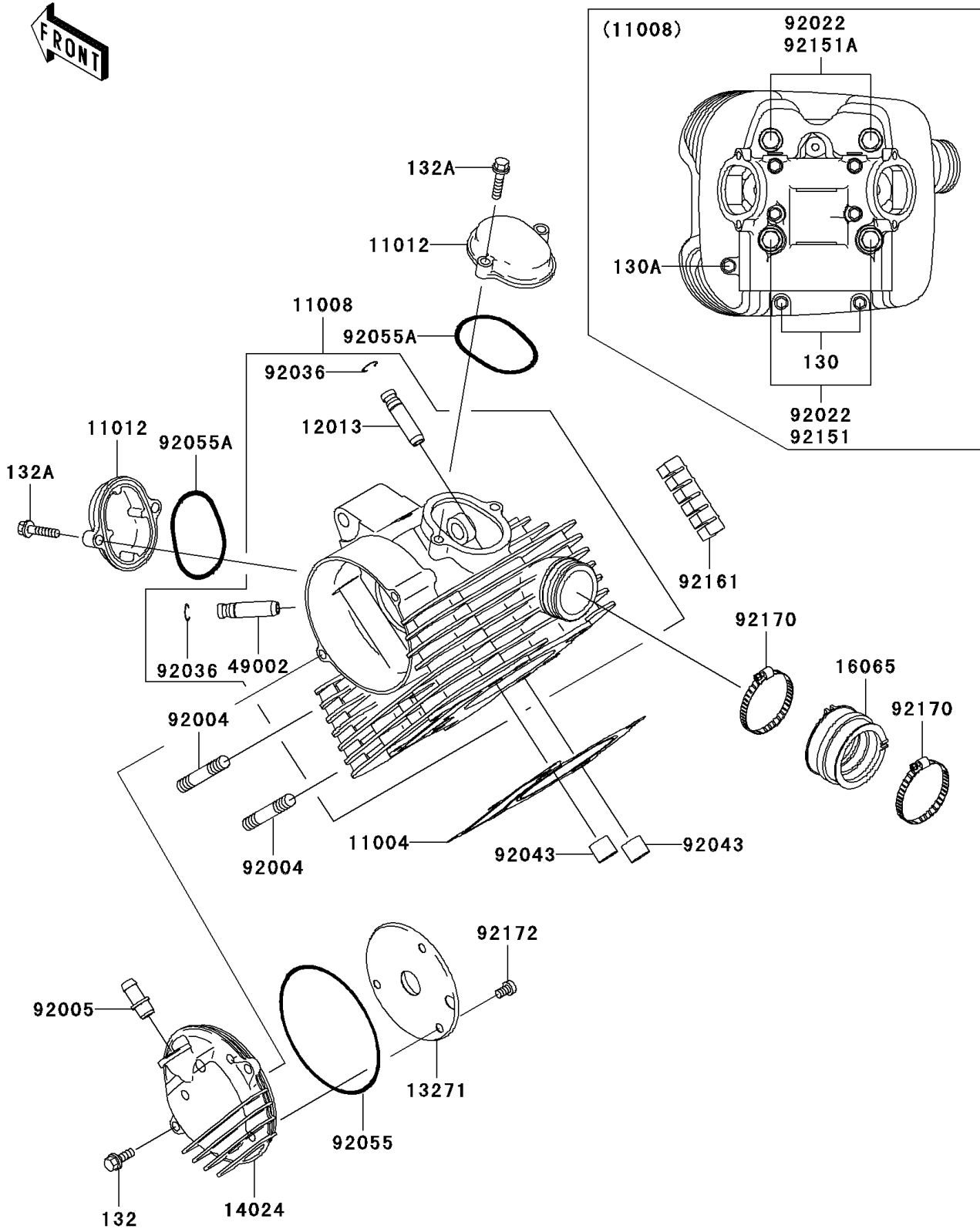


# 2004 Prairie 360 4X4 Hardwoods Green HD PARTS DIAGRAM

Cylinder Head

E1111



## 2004 Prairie 360 4X4 Hardwoods Green HD PARTS LIST

### Cylinder Head

| ITEM NAME                           | PART NUMBER | QUANTITY |
|-------------------------------------|-------------|----------|
| BOLT-FLANGED,6X25 (Ref # 130)       | 130Z06130   | 2        |
| BOLT-FLANGED (Ref # 130A)           | 130Z0690    | 1        |
| BOLT-FLANGED-SMALL (Ref # 132)      | 132Y0616    | 2        |
| BOLT-FLANGED-SMALL (Ref # 132A)     | 132Y0625    | 4        |
| GASKET-HEAD (Ref # 11004)           | 11004-1379  | 1        |
| HEAD-COMP-CYLINDER (Ref # 11008)    | 11008-1415  | 1        |
| CAP,ROCKER ARM (Ref # 11012)        | 11012-1486  | 2        |
| GUIDE-VALVE,INTAKE (Ref # 12013)    | 12013-009   | 1        |
| PLATE,SPROCKET (Ref # 13271)        | 13271-1863  | 1        |
| COVER,CAMSHAFT (Ref # 14024)        | 14024-1060  | 1        |
| HOLDER-CARBURETOR (Ref # 16065)     | 16065-1379  | 1        |
| GUIDE-VALVE,EXHAUST (Ref # 49002)   | 49002-1002  | 1        |
| STUD,8X22 (Ref # 92004)             | 92004-1217  | 2        |
| FITTING,BREATHER PIPE (Ref # 92005) | 92005-1124  | 1        |
| WASHER,11.5X20.5X1.6 (Ref # 92022)  | 92022-1720  | 4        |
| RING-SNAP,VALVE GUIDE (Ref # 92036) | 92036-023   | 2        |
| PIN,13X16X14 (Ref # 92043)          | 92043-1608  | 2        |
| RING-O,99MM (Ref # 92055)           | 92055-107   | 1        |
| RING-O,53.5X2.6 (Ref # 92055A)      | 92055-112   | 2        |
| BOLT,M11X245 (Ref # 92151)          | 92151-1961  | 2        |
| BOLT,M11X220 (Ref # 92151A)         | 92151-1962  | 2        |
| DAMPER,CYLINDER (Ref # 92161)       | 92161-1312  | 4        |
| CLAMP (Ref # 92170)                 | 92170-1674  | 2        |
| SCREW,6X10 (Ref # 92172)            | 92172-1076  | 3        |