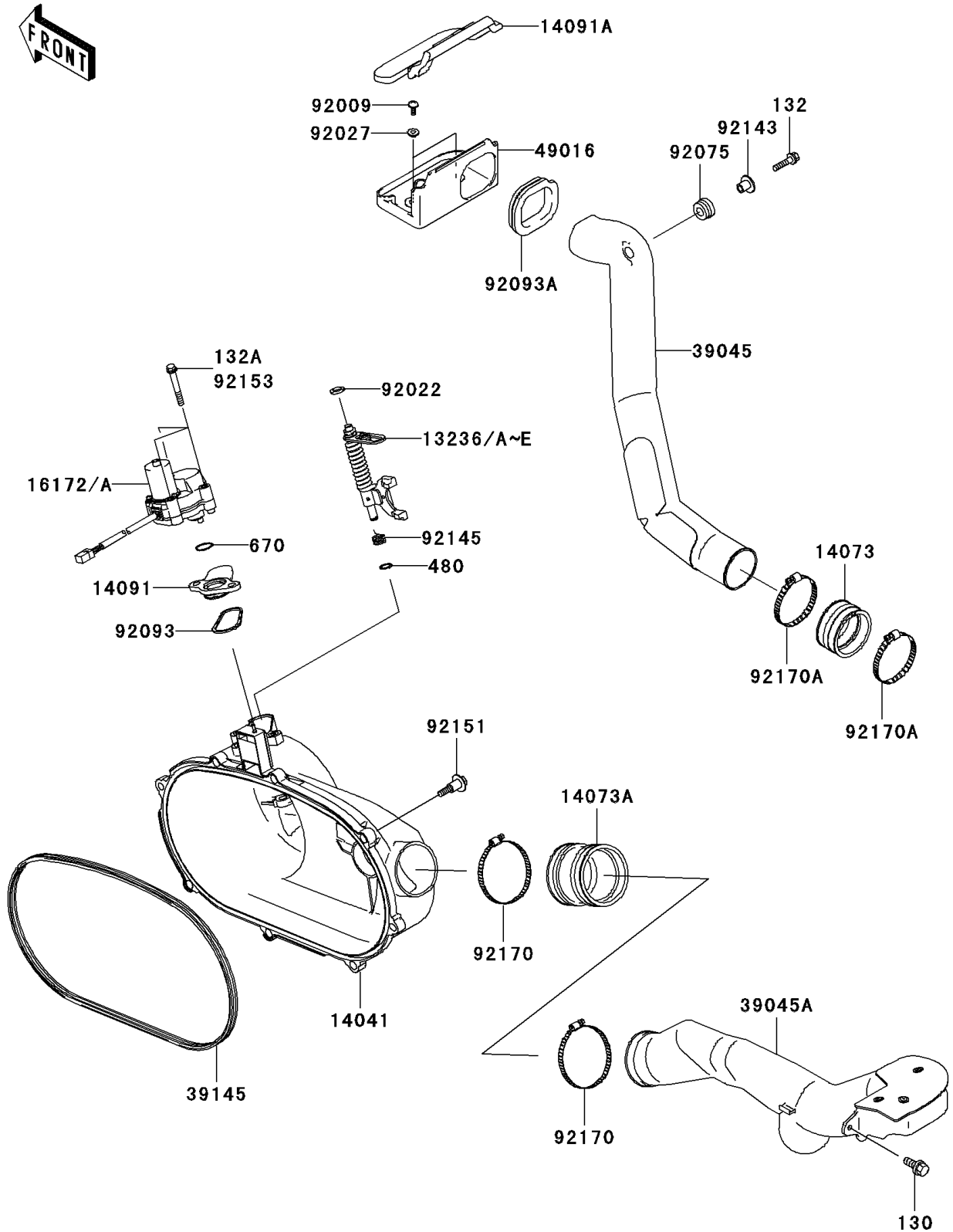


2004 Prairie 360 4X4 Hardwoods Green HD PARTS DIAGRAM

Converter Cover/Drive Belt

E1393



2004 Prairie 360 4X4 Hardwoods Green HD PARTS LIST

Converter Cover/Drive Belt

| ITEM NAME | PART NUMBER | QUANTITY |
|---|-------------|----------|
| BOLT-FLANGED,6X14 (Ref # 130) | 130G0614 | 1 |
| BOLT-FLANGED-SMALL (Ref # 132) | 132G0625 | 1 |
| BOLT-FLANGED-SMALL (Ref # 132A) | 132J0650 | 3 |
| CIRCLIP-TYPE-C,10MM (Ref # 480) | 480J1000 | 1 |
| O RING (Ref # 670) | 670D3022 | 1 |
| LEVER-COMP,YELLOW (Ref # 13236C) | 13236-1385 | AR |
| LEVER-COMP,GREEN (Ref # 13236D) | 13236-1386 | AR |
| LEVER-COMP,PAINT LESS (Ref # 13236E) | 13236-1387 | 1 |
| COVER-COMP,BELT CONVERTER (Ref # 14041) | 14041-1156 | 1 |
| DUCT,AIR FILTER JOINT (Ref # 14073) | 14073-1775 | 1 |
| DUCT,JOINT ENGINE COVER (Ref # 14073A) | 14073-1805 | 1 |
| COVER,ENGINE BRAKE (Ref # 14091) | 14091-1421 | 1 |
| COVER,MUDGUARD (Ref # 14091A) | 14091-1500 | 1 |
| ACTUATOR,BELT CONVERTER (Ref # 16172A) | 16172-1063 | 1 |
| DUCT-ASSY,SNORKEL,IN (Ref # 39045) | 39045-1067 | 1 |
| DUCT-ASSY,SNORKEL,EX (Ref # 39045A) | 39045-1068 | 1 |
| TRIM-SEAL (Ref # 39145) | 39145-1135 | 1 |
| COVER-SEAL,BELT CONVERTER (Ref # 49016) | 49016-1218 | 1 |
| SCREW,TAPPING,5X14 (Ref # 92009) | 92009-1197 | 2 |
| WASHER,10.2X16X1 (Ref # 92022) | 92022-1829 | 1 |
| COLLAR,L=4.6 (Ref # 92027) | 92027-1168 | 2 |
| DAMPER,RUBBER (Ref # 92075) | 92075-1123 | 1 |
| SEAL (Ref # 92093) | 92093-1548 | 1 |
| SEAL,COVER MUDGUARD (Ref # 92093A) | 92093-1572 | 1 |
| COLLAR (Ref # 92143) | 92143-1353 | 1 |
| SPRING (Ref # 92145) | 92145-1567 | 1 |
| BOLT (Ref # 92151) | 92151-1686 | 8 |
| CLAMP (Ref # 92170) | 92170-1763 | 2 |
| CLAMP (Ref # 92170A) | 92170-1764 | 2 |