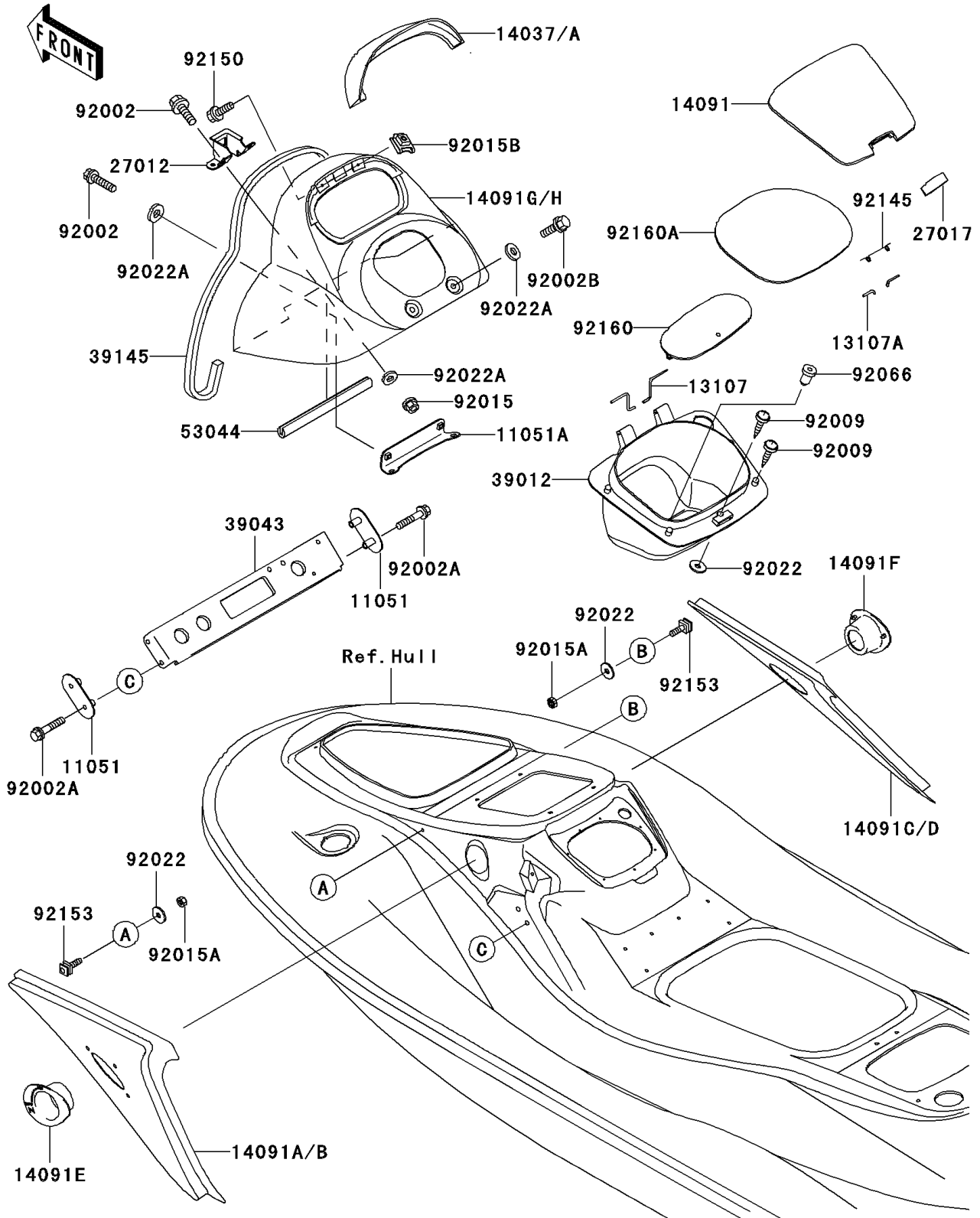


# 2003 1200 STX-R PARTS DIAGRAM

## Hull Middle Fittings

F3136



## 2003 1200 STX-R PARTS LIST

### Hull Middle Fittings

ITEM NAME	PART NUMBER	QUANTITY
BRACKET,CROSSMEMBER (Ref # 11051)	11051-3782	2
BRACKET (Ref # 11051A)	11051-3811	1
SHAFT (Ref # 13107)	13107-3761	2
SHAFT (Ref # 13107A)	13107-3769	2
SCREEN,METER,C.L.GREEN (Ref # 14037)	14037-3709-367	1
COVER,CENTER STORAGE,J.WHITE (Ref # 14091)	14091-3710-8C	1
COVER,SIDE,LH,C.L.GREEN (Ref # 14091A)	14091-3713-367	1
COVER,SIDE,RH,C.L.GREEN (Ref # 14091C)	14091-3714-367	1
COVER,CHOKE KNOB,F.BLACK (Ref # 14091E)	14091-3715-6Z	1
COVER,FUEL KNOB,F.BLACK (Ref # 14091F)	14091-3716-6Z	1
COVER,HANDLE,C.L.GREEN (Ref # 14091G)	14091-3735-367	1
HOOK (Ref # 27012)	27012-3830	1
LOCK,CENTER STORAGE (Ref # 27017)	27017-3723	1
CASE-STORAGE (Ref # 39012)	39012-3728	1
CROSSMEMBER-COMP (Ref # 39043)	39043-3703	1
TRIM-SEAL,L=900 (Ref # 39145)	39145-3772	1
TRIM,L=180 (Ref # 53044)	53044-3755	1
BOLT,6X25 (Ref # 92002)	92002-3714	6
BOLT,6X30 (Ref # 92002A)	92002-3726	4
BOLT,6X12 (Ref # 92002B)	92002-3763	2
SCREW,TAPPING,5X20 (Ref # 92009)	92009-3716	7
NUT,6MM (Ref # 92015)	92015-3767	4
NUT,LOCK,5MM (Ref # 92015A)	92015-3798	6
NUT,CLIP,5MM (Ref # 92015B)	92015-3830	2
WASHER,5X16X1.5 (Ref # 92022)	92022-3041	7
WASHER,6.5X20X1.5 (Ref # 92022A)	92022-3710	8
PLUG (Ref # 92066)	92066-3773	2
SPRING (Ref # 92145)	92145-3711	1
BOLT,5X16 (Ref # 92150)	92150-3778	2

## 2003 1200 STX-R PARTS LIST

### Hull Middle Fittings

ITEM NAME	PART NUMBER	QUANTITY
BOLT,5MM (Ref # 92153)	92153-3703	6
DAMPER (Ref # 92160)	92160-3926	1
DAMPER (Ref # 92160A)	92160-3933	1