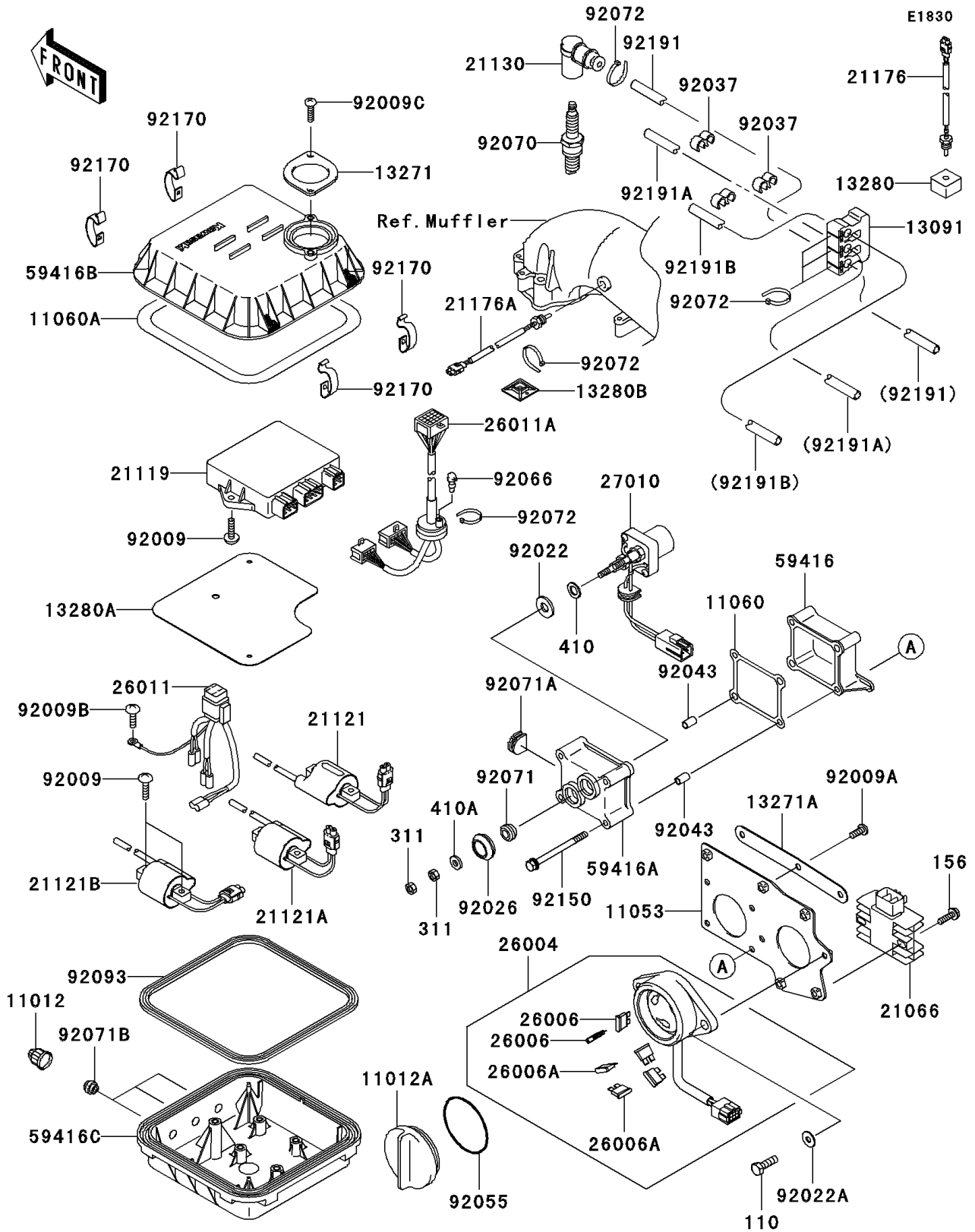


2005 1200 STX-R PARTS DIAGRAM

Ignition System



2005 1200 STX-R PARTS LIST

Ignition System

ITEM NAME	PART NUMBER	QUANTITY
CAP (Ref # 11012)	11012-3005	3
CAP (Ref # 11012A)	11012-3791	1
BRACKET (Ref # 11053)	11053-3721	1
GASKET (Ref # 11060)	11060-3709	1
GASKET,ELECTRIC CASE (Ref # 11060A)	11060-3805	1
HOLDER (Ref # 13091)	13091-3785	1
PLATE (Ref # 13271)	13271-3707	1
PLATE (Ref # 13271A)	13271-3842	1
HOLDER (Ref # 13280)	13280-3711	1
HOLDER (Ref # 13280A)	13280-3712	1
HOLDER (Ref # 13280B)	13280-3739	1
REGULATOR-VOLTAGE (Ref # 21066)	21066-3716	1
IGNITER (Ref # 21119)	21119-3765	1
COIL-IGNITION,#1 (Ref # 21121)	21121-3714	1
COIL-IGNITION,#2 (Ref # 21121A)	21121-3715	1
COIL-IGNITION,#3 (Ref # 21121B)	21121-3716	1
CAP-SPARK PLUG (Ref # 21130)	21130-3706	3
SENSOR,INTAKE AIR TEMP (Ref # 21176)	21176-3730	1
SENSOR,COOLING WATER TEMP (Ref # 21176A)	21176-3731	1
FUSE-ASSY (Ref # 26004)	26004-3728	1
FUSE,10A-R (Ref # 26006)	26006-1007	4
FUSE,3A-P (Ref # 26006A)	26006-1060	2
WIRE-LEAD (Ref # 26011)	26011-3857	1
WIRE-LEAD (Ref # 26011A)	26011-3900	1
SWITCH (Ref # 27010)	27010-3777	1
CASE-ELECTRIC (Ref # 59416)	59416-3710	1
CASE-ELECTRIC (Ref # 59416A)	59416-3711	1
CASE-ELECTRIC,UPP (Ref # 59416B)	59416-3749	1
CASE-ELECTRIC,LWR (Ref # 59416C)	59416-3750	1

2005 1200 STX-R PARTS LIST

Ignition System

ITEM NAME	PART NUMBER	QUANTITY
SCREW,TAPPING,6X25 (Ref # 92009)	92009-1640	8
SCREW,6X15 (Ref # 92009A)	92009-3830	3
SCREW,6X14 (Ref # 92009B)	92009-3845	1
SCREW,6X18 (Ref # 92009C)	92009-3846	2
WASHER (Ref # 92022)	92022-3035	2
WASHER (Ref # 92022A)	92022-567	2
SPACER (Ref # 92026)	92026-3703	2
CLAMP,HOSE (Ref # 92037)	92037-1603	3
PIN (Ref # 92043)	92043-3715	2
RING-O (Ref # 92055)	92055-1292	1
PLUG (Ref # 92066)	92066-1347	1
BOLT,6X20 (Ref # 110)	110R0620	2
BOLT-WP,6X20 (Ref # 156)	156R0620	2
NUT-HEX,6MM (Ref # 311)	311R0600	4
WASHER-PLAIN-SMALL,10MM (Ref # 410)	410B1000	2
WASHER-PLAIN-SMALL,6MM (Ref # 410A)	410S0600	2
PLUG-SPARK,BR9ES(NGK),SOLID (Ref # 92070)	92070-1157	3
GROMMET (Ref # 92071)	92071-3004	2
GROMMET (Ref # 92071A)	92071-3837	1
GROMMET (Ref # 92071B)	92071-527	3
BAND,L=99 (Ref # 92072)	92072-3871	8
SEAL (Ref # 92093)	92093-3754	1
BOLT,6X80 (Ref # 92150)	92150-3711	4
CLAMP (Ref # 92170)	92170-3765	4
TUBE,8X10X690 (Ref # 92191)	92191-3847	1
TUBE,8X10X570 (Ref # 92191A)	92191-3848	1
TUBE,8X10X500 (Ref # 92191B)	92191-3849	1