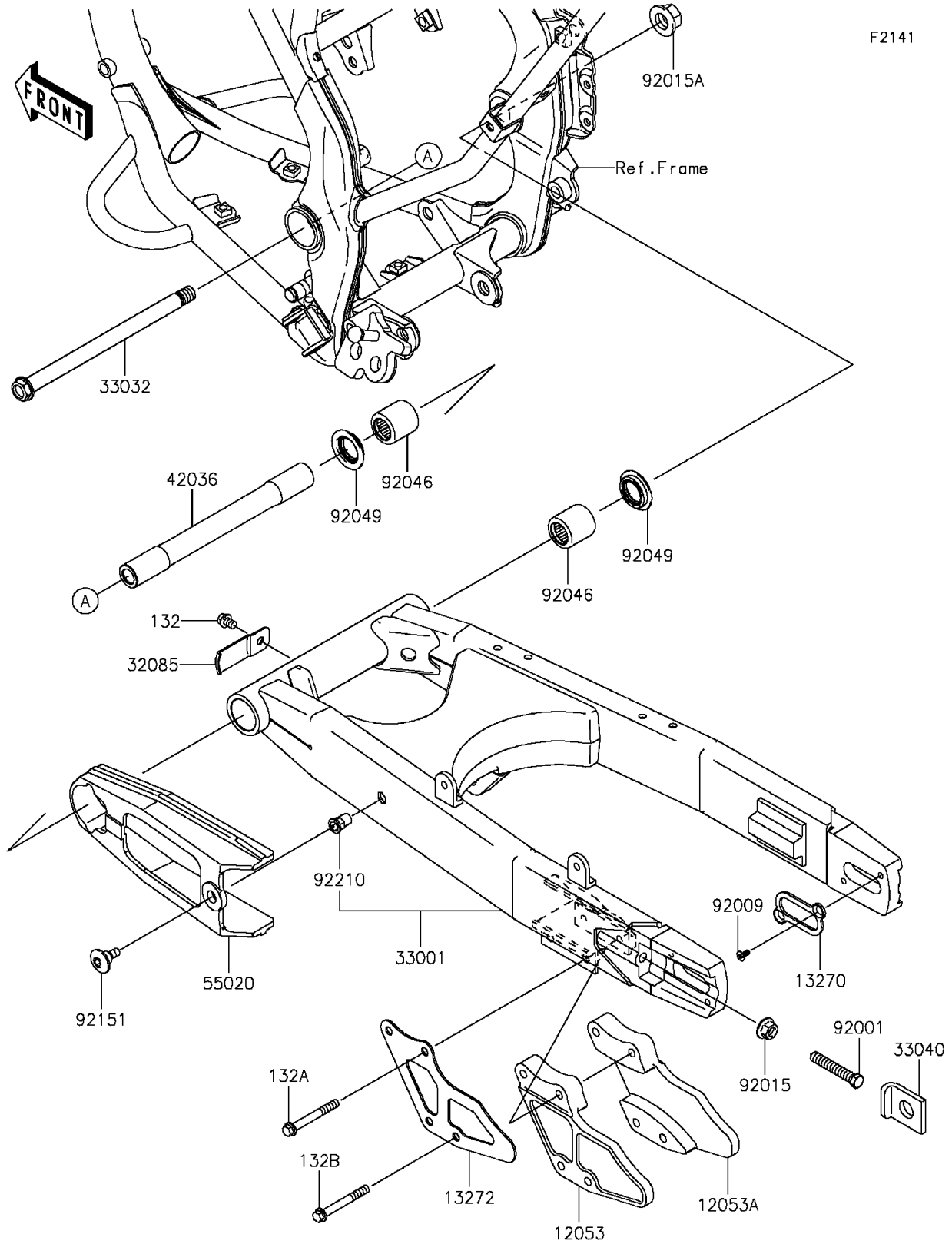


2015 KLX®140 PARTS DIAGRAM

Swingarm



2015 KLX®140 PARTS LIST

Swingarm

| ITEM NAME | PART NUMBER | QUANTITY |
|---------------------------------------|-------------|----------|
| BOLT-FLANGED-SMALL,6X8 (Ref # 132) | 132BA0608 | 1 |
| BOLT-FLANGED-SMALL,6X45 (Ref # 132A) | 132BA0645 | 2 |
| BOLT-FLANGED-SMALL,6X50 (Ref # 132B) | 132BA0650 | 2 |
| GUIDE-CHAIN (Ref # 12053) | 12053-0116 | 1 |
| GUIDE-CHAIN (Ref # 12053A) | 12053-0118 | 1 |
| PLATE (Ref # 13270) | 13270-1899 | 2 |
| PLATE,CHAIN GUIDE (Ref # 13272) | 13272-0406 | 1 |
| STOPPER (Ref # 32085) | 32085-0138 | 1 |
| ARM-COMP-SWING (Ref # 33001) | 33001-0151 | 1 |
| SHAFT-SWING ARM (Ref # 33032) | 33032-0030 | 1 |
| ADJUSTER-CHAIN (Ref # 33040) | 33040-0032 | 2 |
| SLEEVE,PIVOT,L=197.8 (Ref # 42036) | 42036-0045 | 1 |
| GUARD,CHAIN (Ref # 55020) | 55020-0336 | 1 |
| BOLT,8X46 (Ref # 92001) | 92001-1179 | 2 |
| SCREW,5X10 (Ref # 92009) | 92009-1828 | 4 |
| NUT,FLANGED,8MM (Ref # 92015) | 92015-1014 | 2 |
| NUT,14MM (Ref # 92015A) | 92015-1407 | 1 |
| BEARING-NEEDLE,BM202726 (Ref # 92046) | 92046-1110 | 2 |
| SEAL-OIL,ARM (Ref # 92049) | 92049-1109 | 2 |
| BOLT,SOCKET,6X18 (Ref # 92151) | 92151-1149 | 1 |
| NUT,POP,6MM,L=15 (Ref # 92210) | 92210-1397 | 1 |