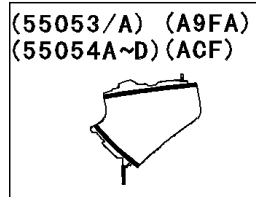
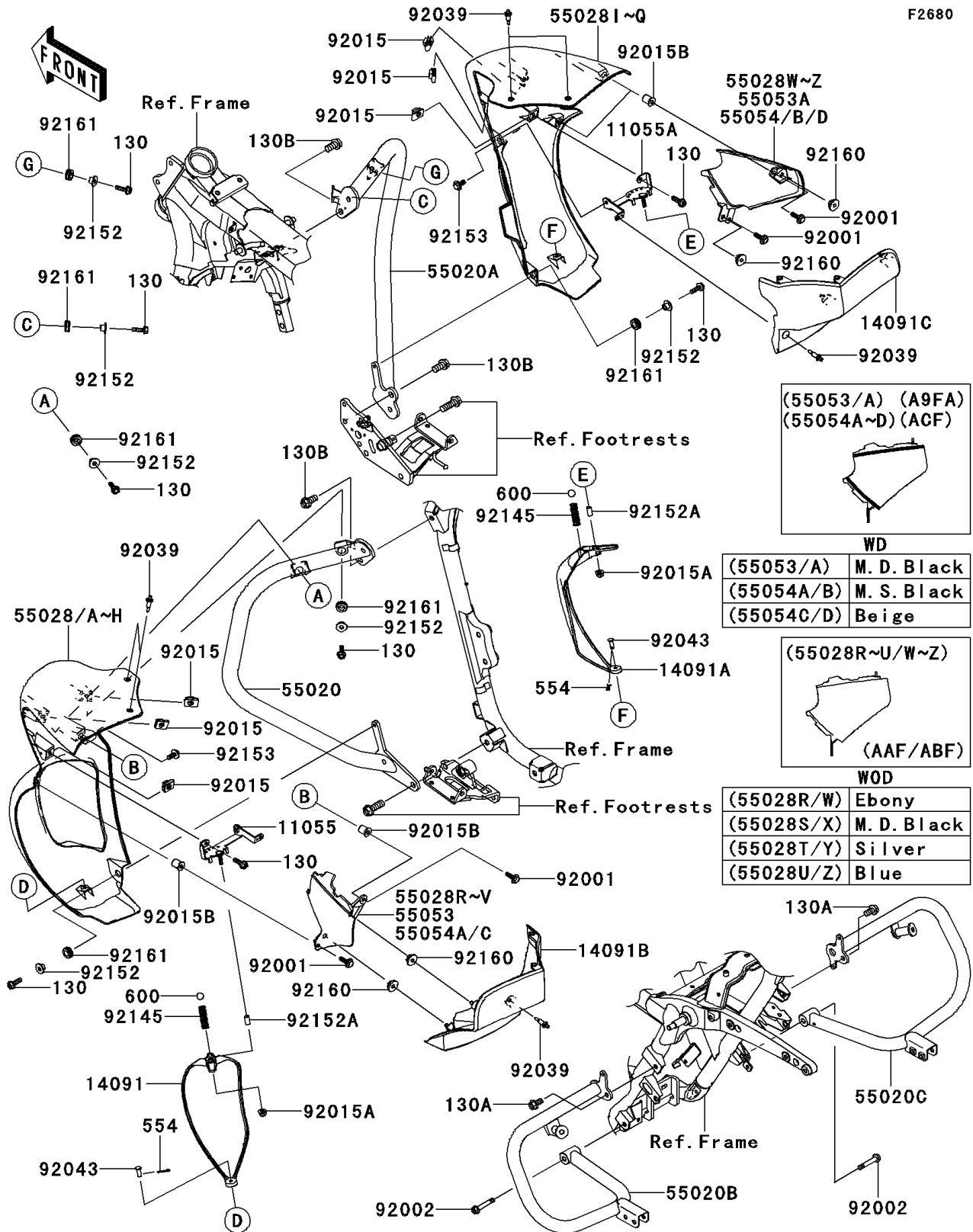


2009 Vulcan® 1700 Voyager® PARTS DIAGRAM

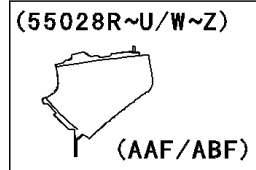
Guard(s)

F2680



WD

(55053/A)	M. D. Black
(55054A/B)	M. S. Black
(55054C/D)	Beige



WOD

(55028R/W)	Ebony
(55028S/X)	M. D. Black
(55028T/Y)	Silver
(55028U/Z)	Blue

2009 Vulcan® 1700 Voyager® PARTS LIST

Guard(s)

ITEM NAME	PART NUMBER	QUANTITY
BRACKET,VENTILATION,LH,UPP (Ref # 11055)	11055-0687	1
BRACKET,VENTILATION,RH,UPP (Ref # 11055A)	11055-0688	1
COVER,VENTILATION,LH,F.BLACK (Ref # 14091)	14091-1618-6Z	1
COVER,VENTILATION,RH,F.BLACK (Ref # 14091A)	14091-1619-6Z	1
COVER,LH (Ref # 14091B)	14091-1787	1
COVER,RH (Ref # 14091C)	14091-1788	1
GUARD,FR,LH (Ref # 55020)	55020-0512	1
GUARD,FR,RH (Ref # 55020A)	55020-0513	1
GUARD,RR,LH (Ref # 55020B)	55020-0535	1
GUARD,RR,RH (Ref # 55020C)	55020-0536	1
COWLING,LEG SHIELD,OUT,LH,BLUE (Ref # 55028G)	55028-0220-723	1
COWLING,LEG SHIELD,OUT,LH,TITA (Ref # 55028H)	55028-0220-740	1
COWLING,LEG SHIELD,OUT,RH,BLUE (Ref # 55028P)	55028-0221-723	1
COWLING,LEG SHIELD,OUT,RH,TITA (Ref # 55028Q)	55028-0221-740	1
BOLT-FLANGED,6X20 (Ref # 130)	130BA0620	8
BOLT-FLANGED,8X16 (Ref # 130A)	130BA0816	2
BOLT-FLANGED,10X20 (Ref # 130B)	130BC1020	3
PIN-SNAP (Ref # 554)	554DA0600	2
BALL-STEEL,1/4" (Ref # 600)	600A0800	2
COWLING,LEG SHIELD,INN,LH,BLK (Ref # 55053)	55053-5162-17K	1
COWLING,LEG SHIELD,INN,RH,BLK (Ref # 55053A)	55053-5163-17K	1
BOLT,WP,6X20 (Ref # 92001)	92001-1460	4
BOLT,FLANGED,8X47 (Ref # 92002)	92002-1850	2
NUT,6MM (Ref # 92015)	92015-1602	6
NUT,LOCK,FLANGED,6MM (Ref # 92015A)	92015-1675	2
NUT (Ref # 92015B)	92015-1700	4
RIVET (Ref # 92039)	92039-1283	6
PIN,6X11 (Ref # 92043)	92043-092	2
SPRING (Ref # 92145)	92145-1319	2

2009 Vulcan[®] 1700 Voyager[®] PARTS LIST

Guard(s)

ITEM NAME	PART NUMBER	QUANTITY
COLLAR (Ref # 92152)	92152-0295	6
COLLAR,6.2X7.8X14 (Ref # 92152A)	92152-0771	2
BOLT,6X16 (Ref # 92153)	92153-1215	2
DAMPER (Ref # 92160)	92160-1613	4
DAMPER (Ref # 92161)	92161-0266	6