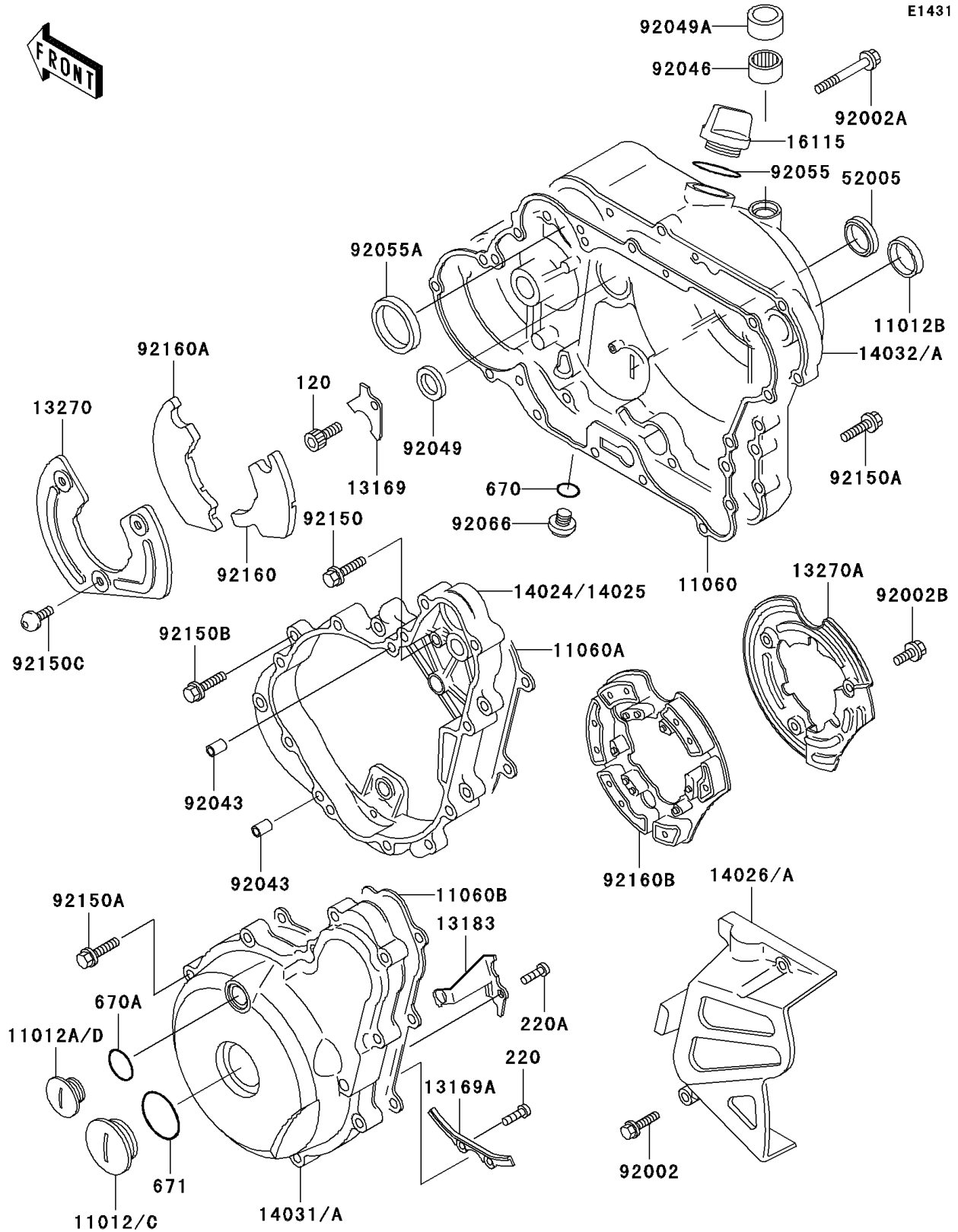


1999 KLR650 PARTS DIAGRAM

Engine Cover(s)



1999 KLR650 PARTS LIST

Engine Cover(s)

ITEM NAME	PART NUMBER	QUANTITY
CAP (Ref # 11012B)	11012-1567	1
CAP (Ref # 11012C)	11012-1693	1
CAP,TOP MARK (Ref # 11012D)	11012-1694	1
GASKET,CLUTCH COVER (Ref # 11060)	11060-1111	1
GASKET,GENERATOR CASE COVER (Ref # 11060A)	11060-1692	1
GASKET,GENERATOR COVER (Ref # 11060B)	11060-1693	1
PLATE,OIL SEAL (Ref # 13169)	13169-1735	1
PLATE,PULSING COIL LEAD (Ref # 13169A)	13169-1882	1
PLATE,GENERATOR (Ref # 13183)	13183-1144	1
PLATE (Ref # 13270)	13270-1438	1
PLATE (Ref # 13270A)	13270-1667	1
COVER,GENERATOR CASE (Ref # 14024)	14024-1773	1
COVER-CHAIN (Ref # 14026)	14026-1225	1
COVER-GENERATOR (Ref # 14031A)	14031-1305	1
COVER-CLUTCH (Ref # 14032A)	14032-1488	1
CAP-OIL FILLER (Ref # 16115)	16115-1009	1
GAUGE,OIL LEVEL (Ref # 52005)	52005-1009	1
BOLT,6X25 (Ref # 92002)	92002-1086	3
BOLT,6X80 (Ref # 92002A)	92002-1568	1
BOLT,6X8 (Ref # 92002B)	92002-1944	3
PIN,6.2X8X14 (Ref # 92043)	92043-1263	2
BEARING-NEEDLE,HK1210 (Ref # 92046)	92046-1010	1
SEAL-OIL,SCY 15X30X7 (Ref # 92049)	92049-1158	1
SEAL-OIL,TB12205.5 (Ref # 92049A)	92049-1271	1
RING-O,31.5X2.6 (Ref # 92055)	92055-049	1
RING-O,62.6X66X3.1 (Ref # 92055A)	92055-1221	1
PLUG,DRAIN (Ref # 92066)	92066-1156	1
BOLT,6X20 (Ref # 92150)	92150-1010	1
BOLT,6X30 (Ref # 92150A)	92150-1021	24

1999 KLR650 PARTS LIST

Engine Cover(s)

ITEM NAME	PART NUMBER	QUANTITY
BOLT,6X25 (Ref # 92150B)	92150-1779	8
BOLT,6X7 (Ref # 92150C)	92150-1902	3
DAMPER (Ref # 92160)	92160-1608	1
DAMPER (Ref # 92160A)	92160-1609	1
DAMPER (Ref # 92160B)	92160-1763	1
BOLT-SOCKET,6X10 (Ref # 120)	120P0610	1
SCREW-PAN-CROS (Ref # 220)	220B0510	2
SCREW-PAN-CROS,6X12 (Ref # 220A)	220B0612	1
O RING,11MM (Ref # 670)	670B2011	1
O RING,18MM (Ref # 670A)	670B2018	1
O RING,40MM (Ref # 671)	671B2540	1