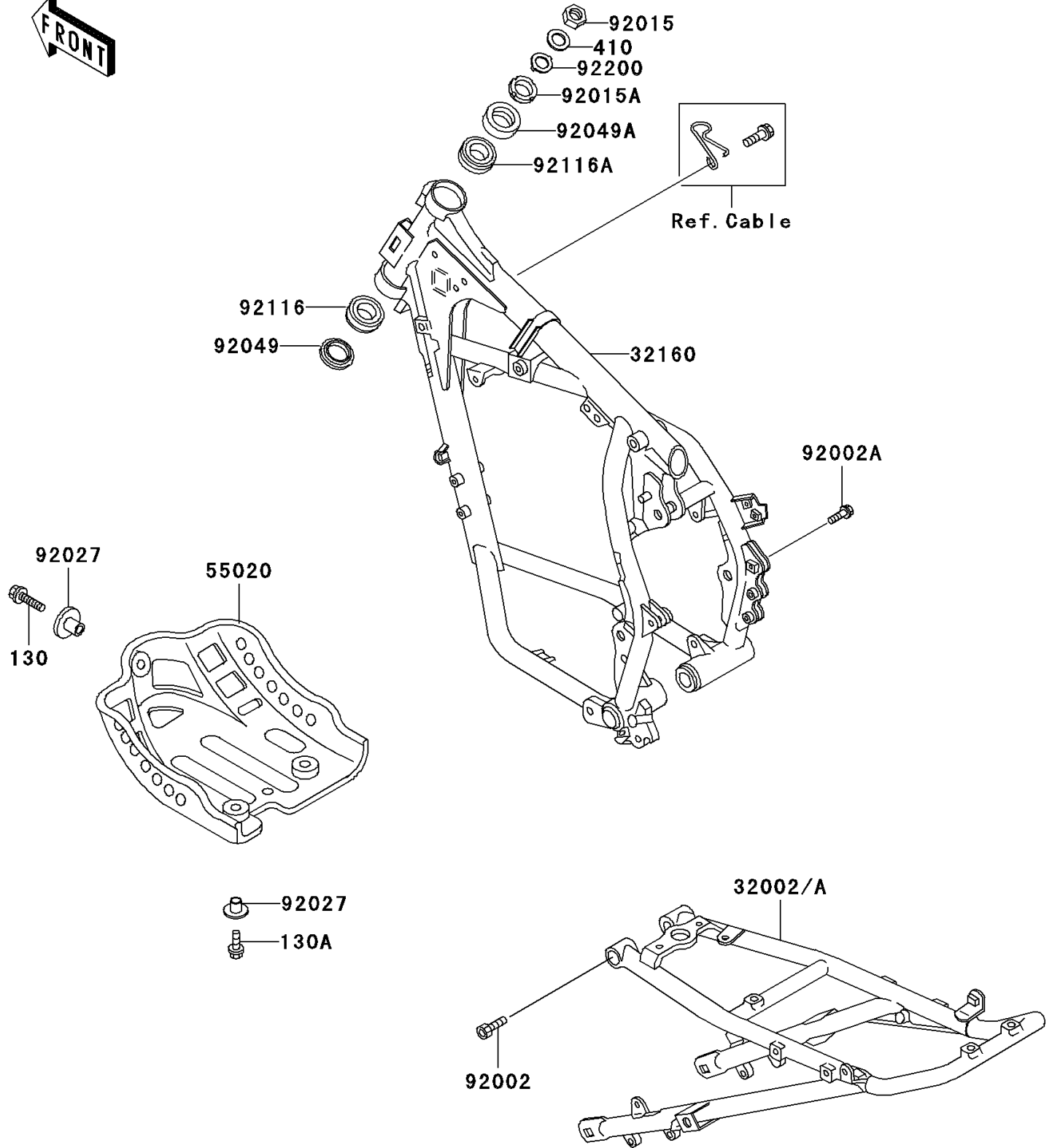


1996 KLR650 PARTS DIAGRAM

Frame

F2120



1996 KLR650 PARTS LIST

Frame

| ITEM NAME | PART NUMBER | QUANTITY |
|---------------------------------------------|---------------|----------|
| BOLT-FLANGED,6X12 (Ref # 130) | 130G0612 | 1 |
| BOLT-FLANGED,6X14 (Ref # 130A) | 130G0614 | 2 |
| W-PLAIN-S (Ref # 410) | 410F1800 | 1 |
| FRAME-COMP,FR,SILVER NO.25 (Ref # 32160) | 32160-1408-CE | 1 |
| GUARD,ENGINE,BLACK (Ref # 55020) | 55020-1249-6Z | 1 |
| BOLT,SOCKET,8X30 (Ref # 92002) | 92002-1844 | 2 |
| BOLT,FLANGED,8X28 (Ref # 92002A) | 92002-1971 | 2 |
| NUT,18MM (Ref # 92015) | 92015-1404 | 1 |
| NUT,25MM,T=12 (Ref # 92015A) | 92015-1546 | 1 |
| COLLAR (Ref # 92027) | 92027-1794 | 3 |
| SEAL-OIL,XMHE36X52X4J (Ref # 92049) | 92049-1162 | 1 |
| SEAL-OIL,STEERING STEM (Ref # 92049A) | 92049-1214 | 1 |
| BEARING-ROLLER,HR320/28XJ (Ref # 92116) | 92116-1009 | 1 |
| BEARING-ROLLER,HICAP 32005JR (Ref # 92116A) | 92116-1052 | 1 |
| WASHER,CLAW,18.5X30X2.3 (Ref # 92200) | 92200-1357 | 1 |
| FRAME-COMP,RR,SILVER NO.25 (Ref # 32002) | 32002-1918-CE | 1 |
| FRAME-COMP,RR,SILVER NO.25 (Ref # 32002A) | 32002-1923-CE | 1 |