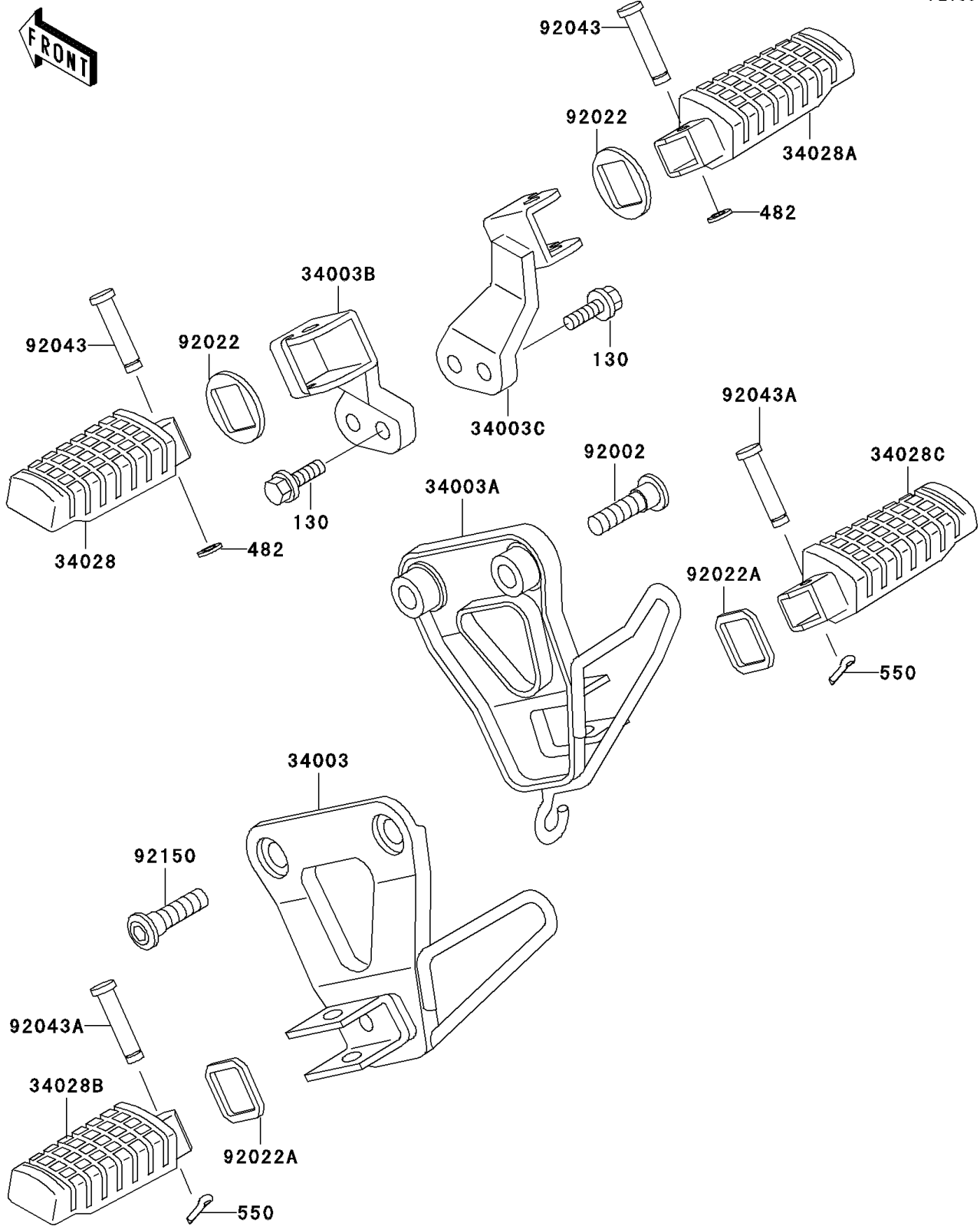


1996 KLR650 PARTS DIAGRAM

Footrests

F2160



1996 KLR650 PARTS LIST

Footrests

| ITEM NAME | PART NUMBER | QUANTITY |
|---|---------------|----------|
| BOLT-FLANGED,8X20 (Ref # 130) | 130T0820 | 4 |
| CIRCLIP-TYPE-E (Ref # 482) | 482L7000 | 2 |
| PIN-COTTER,2.0X15 (Ref # 550) | 550D2015 | 2 |
| HOLDER-STEP,RR,LH,SILVER NO.25 (Ref # 34003) | 34003-1275-CE | 1 |
| HOLDER-STEP,RR,RH,SILVER NO.25 (Ref # 34003A) | 34003-1276-CE | 1 |
| HOLDER-STEP,FR,LH,SILVER NO.25 (Ref # 34003B) | 34003-1431-CE | 1 |
| HOLDER-STEP,FR,RH,SILVER NO.25 (Ref # 34003C) | 34003-1432-CE | 1 |
| STEP,FR,LH (Ref # 34028) | 34028-1193 | 1 |
| STEP,FR,RH (Ref # 34028A) | 34028-1194 | 1 |
| STEP,RR,LH (Ref # 34028B) | 34028-1195 | 1 |
| STEP,RR,RH (Ref # 34028C) | 34028-1196 | 1 |
| BOLT,SOCKET,8X23.5 (Ref # 92002) | 92002-1598 | 2 |
| WASHER,STEP FITTING (Ref # 92022) | 92022-1314 | 2 |
| WASHER,STEP FITTING (Ref # 92022A) | 92022-1797 | 2 |
| PIN,8X36.5 (Ref # 92043) | 92043-1339 | 2 |
| PIN,6X28 (Ref # 92043A) | 92043-1464 | 2 |
| BOLT,SOCKET,8X20 (Ref # 92150) | 92150-1839 | 2 |