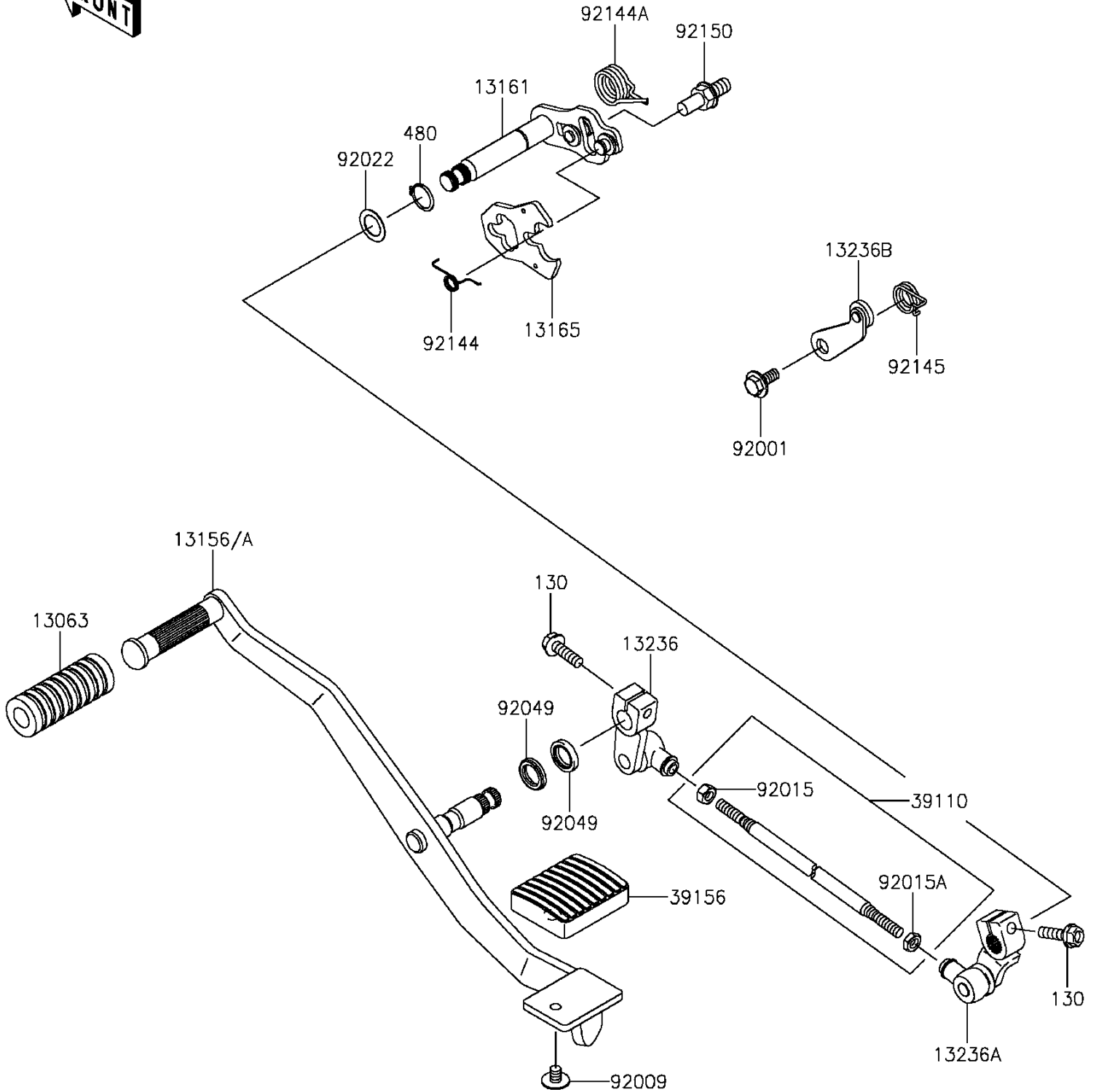


2014 Vulcan 900 Classic PARTS DIAGRAM

Gear Change Mechanism

E1370



2014 Vulcan 900 Classic PARTS LIST

Gear Change Mechanism

| ITEM NAME | PART NUMBER | QUANTITY |
|---|-------------|----------|
| BOLT-FLANGED,6X20 (Ref # 130) | 130CB0620 | 2 |
| CIRCLIP-TYPE-C,13MM (Ref # 480) | 480J1300 | 1 |
| DAMPER,PEDAL (Ref # 13063) | 13063-002 | 1 |
| LEVER-CHANGE (Ref # 13156) | 13156-0063 | 1 |
| LEVER-COMP-CHANGE SHAFT (Ref # 13161) | 13161-0046 | 1 |
| PAWL,CHANGE LEVER (Ref # 13165) | 13165-1151 | 1 |
| LEVER-COMP (Ref # 13236) | 13236-0100 | 1 |
| LEVER-COMP (Ref # 13236A) | 13236-0119 | 1 |
| LEVER-COMP,POSITION (Ref # 13236B) | 13236-1126 | 1 |
| ROD-ASSY-TIE (Ref # 39110) | 39110-1124 | 1 |
| PAD (Ref # 39156) | 39156-1641 | 1 |
| BOLT,FLANGED,6X14 (Ref # 92001) | 92001-1715 | 1 |
| SCREW,6X8 (Ref # 92009) | 92009-1677 | 1 |
| NUT,6MM (Ref # 92015) | 92015-1443 | 1 |
| NUT,LEFT HANDED,6MM (Ref # 92015A) | 92015-1444 | 1 |
| WASHER,13.2X20X0.5 (Ref # 92022) | 92022-1224 | 1 |
| SEAL-OIL,VB13193 (Ref # 92049) | 92049-1398 | 2 |
| SPRING (Ref # 92144) | 92144-1029 | 1 |
| SPRING,CHANGE PEDAL RETURN (Ref # 92144A) | 92144-1074 | 1 |
| SPRING,RETURN (Ref # 92145) | 92145-0462 | 1 |
| BOLT,RETURN SPRING (Ref # 92150) | 92150-1869 | 1 |