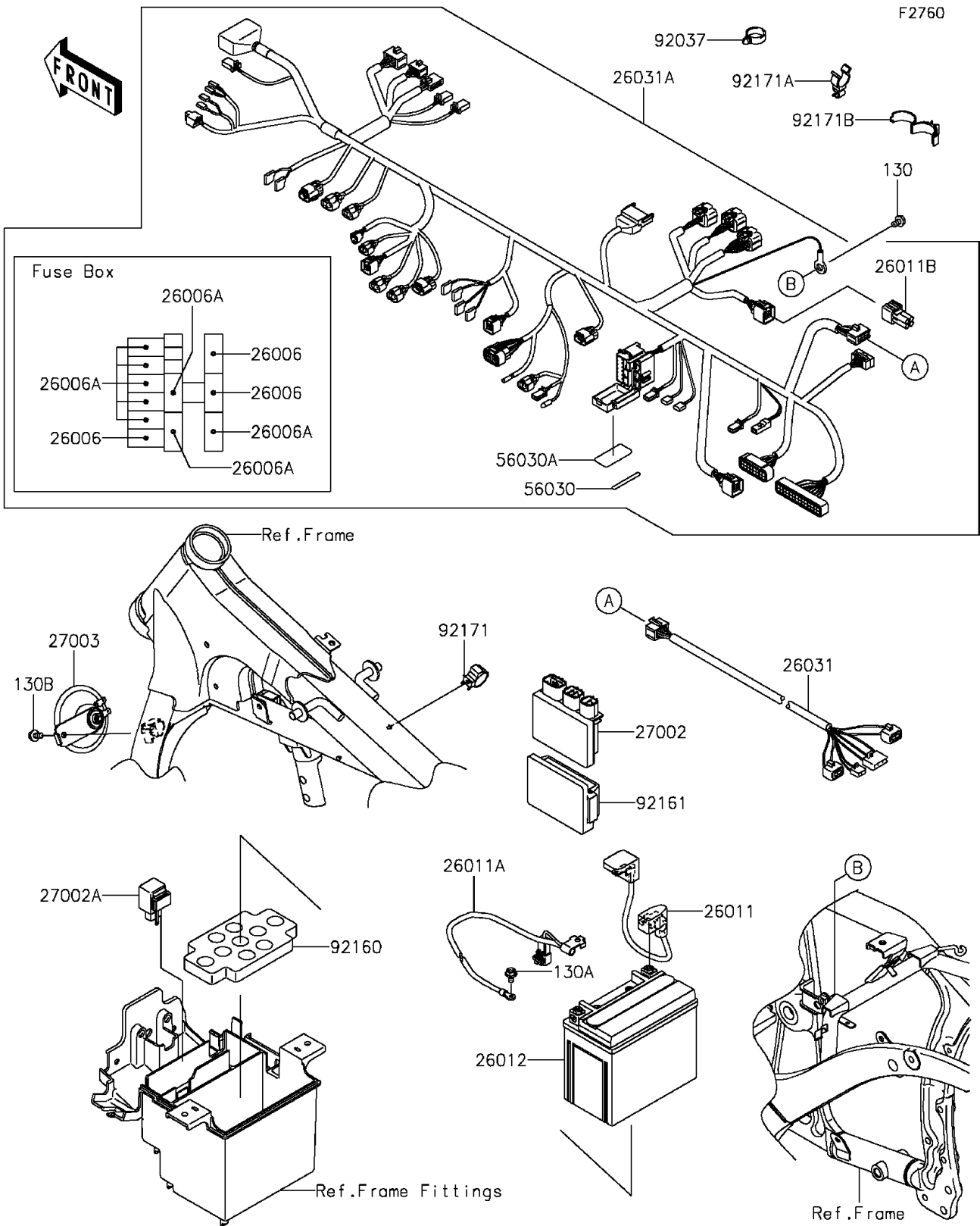


# 2014 Vulcan 900 Classic PARTS DIAGRAM

## Chassis Electrical Equipment



## 2014 Vulcan 900 Classic PARTS LIST

### Chassis Electrical Equipment

| ITEM NAME                               | PART NUMBER | QUANTITY |
|---|-------------|----------|
| BOLT-FLANGED,6X10 (Ref # 130)           | 130BA0610   | 1        |
| BOLT-FLANGED,6X10 (Ref # 130A)          | 130BB0610   | 1        |
| BOLT-FLANGED,6X12 (Ref # 130B)          | 130BB0612   | 1        |
| FUSE,MINI BLADE,15A,BLUE (Ref # 26006)  | 26006-0001  | 3        |
| FUSE,MINI BLADE,10A,RED (Ref # 26006A)  | 26006-1078  | 8        |
| WIRE-LEAD,BATTERY(+) (Ref # 26011)      | 26011-0089  | 1        |
| WIRE-LEAD,BATTERY(-) (Ref # 26011A)     | 26011-0090  | 1        |
| WIRE-LEAD,CAP (Ref # 26011B)            | 26011-0271  | 1        |
| BATTERY,YTX12-BS,12V 10AH (Ref # 26012) | 26012-0094  | 1        |
| HARNESS,RR (Ref # 26031)                | 26031-0448  | 1        |
| HARNESS,MAIN (Ref # 26031A)             | 26031-0962  | 1        |
| RELAY-ASSY (Ref # 27002)                | 27002-0007  | 1        |
| RELAY-ASSY,TURN SIGNAL (Ref # 27002A)   | 27002-1101  | 1        |
| HORN (Ref # 27003)                      | 27003-0039  | 1        |
| LABEL,FUSE BOX (Ref # 56030)            | 56030-0016  | 1        |
| LABEL,FUSE BOX (Ref # 56030A)           | 56030-0046  | 1        |
| CLAMP,HOSE (Ref # 92037)                | 92037-1827  | 1        |
| DAMPER,BATTERY (Ref # 92160)            | 92160-1635  | 1        |
| DAMPER,RELAY BOX (Ref # 92161)          | 92161-0203  | 1        |
| CLAMP,20MM DIA. (Ref # 92171)           | 92171-0081  | 1        |
| CLAMP,CABLE (Ref # 92171A)              | 92171-0347  | 1        |
| CLAMP,10MM DIA. (Ref # 92171B)          | 92171-1423  | 1        |