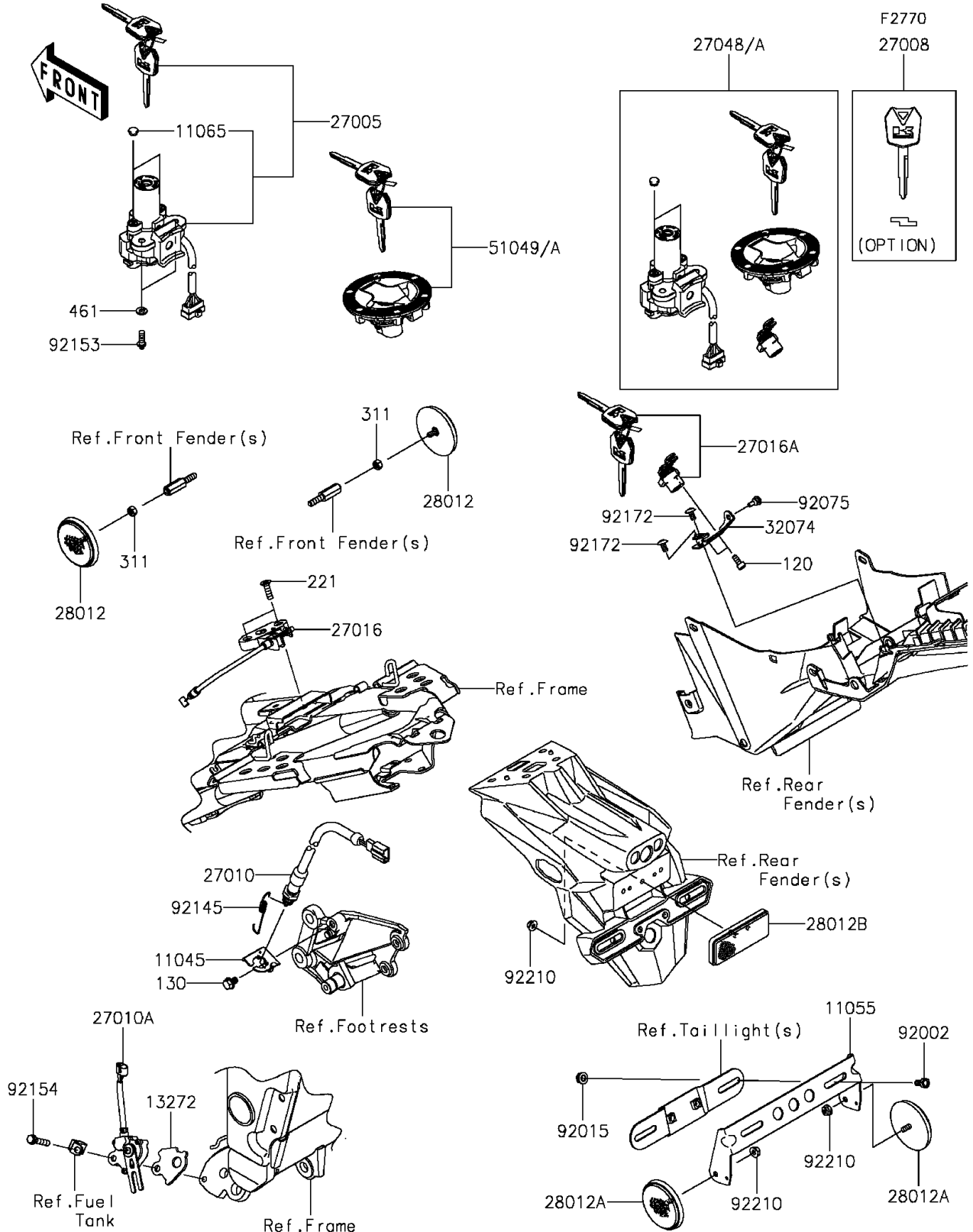


2015 Ninja® 300 PARTS DIAGRAM

Ignition Switch/Locks/Reflectors



2015 Ninja® 300 PARTS LIST

Ignition Switch/Locks/Reflectors

| ITEM NAME | PART NUMBER | QUANTITY |
|---|-------------|----------|
| BOLT-SOCKET,5X12 (Ref # 120) | 120CB0512 | 2 |
| BOLT-FLANGED,6X10 (Ref # 130) | 130BA0610 | 1 |
| SCREW-CSK-CROS,6X20 (Ref # 221) | 221AA0620 | 2 |
| NUT-HEX,5MM (Ref # 311) | 311AB0500 | 2 |
| WASHER-SPRING,6MM (Ref # 461) | 461DA0600 | 2 |
| BRACKET,REAR BRAKE SWITCH (Ref # 11045) | 11045-1641 | 1 |
| BRACKET,REFLECTOR (Ref # 11055) | 11055-1092 | 1 |
| CAP,IGNITION SWITCH (Ref # 11065) | 11065-0708 | 2 |
| PLATE (Ref # 13272) | 13272-1330 | 1 |
| SWITCH-ASSY-IGNITION (Ref # 27005) | 27005-5144 | 1 |
| KEY-LOCK,BLANK (Ref # 27008) | 27008-0053 | 1 |
| SWITCH,REAR BRAKE (Ref # 27010) | 27010-0726 | 1 |
| SWITCH,SIDE STAND (Ref # 27010A) | 27010-1455 | 1 |
| LOCK-ASSY,SEAT STRIKER (Ref # 27016) | 27016-0075 | 1 |
| LOCK-ASSY (Ref # 27016A) | 27016-5378 | 1 |
| REFLECTOR-REFLEX,FR,SIDE (Ref # 28012) | 28012-0001 | 2 |
| REFLECTOR-REFLEX (Ref # 28012A) | 28012-0002 | 2 |
| REFLECTOR-REFLEX (Ref # 28012B) | 28012-1077 | 1 |
| BRACKET-LOCK (Ref # 32074) | 32074-0018 | 1 |
| BOLT,6X12 (Ref # 92002) | 92002-1132 | 2 |
| NUT,FLANGED,6MM (Ref # 92015) | 92015-1367 | 2 |
| DAMPER (Ref # 92075) | 92075-1808 | 1 |
| SPRING,BRAKE LAMP SWITCH (Ref # 92145) | 92145-0683 | 1 |
| BOLT,TORX,6X16 (Ref # 92153) | 92153-0967 | 2 |
| BOLT,FLANGED,6X30 (Ref # 92154) | 92154-1040 | 1 |
| SCREW,TAPPING,5X10 (Ref # 92172) | 92172-0262 | 2 |
| NUT,FLANGED,5MM (Ref # 92210) | 92210-0007 | 3 |
| SWITCH-ASSY (Ref # 27048) | 27048-5075 | 1 |
| SWITCH-ASSY (Ref # 27048A) | 27048-5077 | 1 |

2015 Ninja® 300 PARTS LIST

Ignition Switch/Locks/Reflectors

| ITEM NAME | PART NUMBER | QUANTITY |
|------------------------------|-------------|----------|
| CAP-TANK,FUEL (Ref # 51049) | 51049-5009 | 1 |
| CAP-TANK,FUEL (Ref # 51049A) | 51049-5011 | 1 |